

KRT13 Antibody
Purified Mouse Monoclonal Antibody
Catalog # AO1741a

Specification

KRT13 Antibody - Product Information

Application	E, WB, FC
Primary Accession	P13646
Reactivity	Human
Host	Mouse
Clonality	Monoclonal
Isotype	IgG1
Calculated MW	52kDa KDa

Description

The protein encoded by this gene is a member of the keratin gene family. The keratins are intermediate filament proteins responsible for the structural integrity of epithelial cells and are subdivided into cytokeratins and hair keratins. Most of the type I cytokeratins consist of acidic proteins which are arranged in pairs of heterotypic keratin chains. This type I cytokeratin is paired with keratin 4 and expressed in the suprabasal layers of non-cornified stratified epithelia. Mutations in this gene and keratin 4 have been associated with the autosomal dominant disorder White Sponge Nevus. The type I cytokeratins are clustered in a region of chromosome 17q21.2. Alternative splicing of this gene results in multiple transcript variants; however, not all variants have been described.

Immunogen

Purified recombinant fragment of human KRT13 (AA: 143-295) expressed in E. Coli.

Formulation

Purified antibody in PBS with 0.05% sodium azide

KRT13 Antibody - Additional Information

Gene ID 3860

Other Names

Keratin, type I cytoskeletal 13, Cytokeratin-13, CK-13, Keratin-13, K13, KRT13

Dilution

E~~1/10000
WB~~1/500 - 1/2000
FC~~1/200 - 1/400

Storage

Maintain refrigerated at 2-8°C for up to 6 months. For long term storage store at -20°C in small aliquots to prevent freeze-thaw cycles.

Precautions

KRT13 Antibody is for research use only and not for use in diagnostic or therapeutic procedures.

KRT13 Antibody - Protein Information

Name KRT13

Function

Type 1 keratin (Probable). Maintains postnatal tongue mucosal cell homeostasis and tissue organization in response to mechanical stress, potentially via regulation of the G1/S phase cyclins CCNE1 and CCNE2 (By similarity).

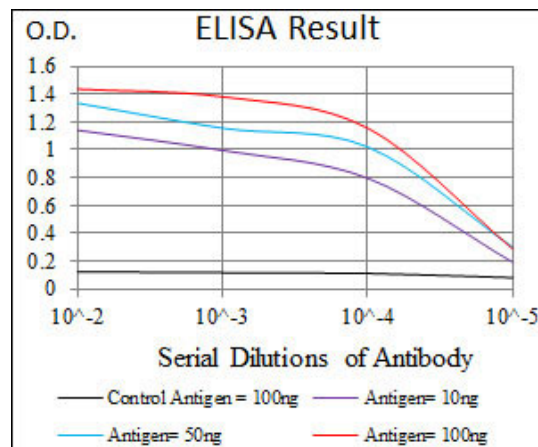
Tissue Location

Expressed in some epidermal sweat gland ducts (at protein level) and in exocervix, esophagus and placenta

KRT13 Antibody - Protocols

Provided below are standard protocols that you may find useful for product applications.

- [Western Blot](#)
- [Blocking Peptides](#)
- [Dot Blot](#)
- [Immunohistochemistry](#)
- [Immunofluorescence](#)
- [Immunoprecipitation](#)
- [Flow Cytometry](#)
- [Cell Culture](#)



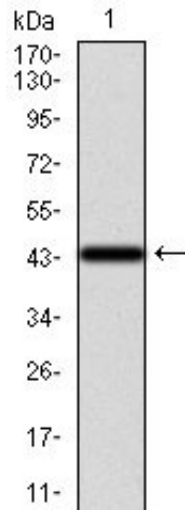


Figure 1: Western blot analysis using KRT13 mAb against human KRT13 recombinant protein. (Expected MW is 43.4 kDa)

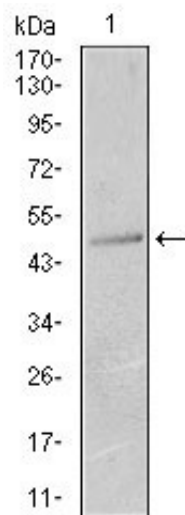


Figure 2: Western blot analysis using KRT13 mouse mAb against T47D (1) cell lysate.

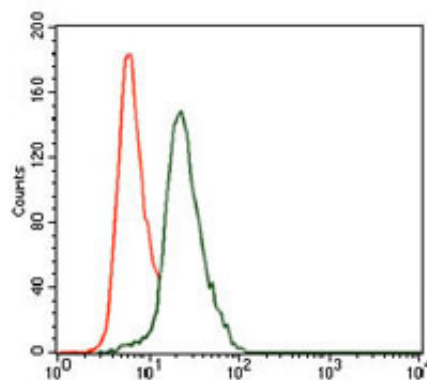


Figure 3: Flow cytometric analysis of HeLa cells using KRT13 mouse mAb (green) and negative control (red).

KRT13 Antibody - References

1. J Oral Sci. 2009 Sep;51(3):355-65. 2. Mol Cell Endocrinol. 2008 Dec 16;296(1-2):1-9.

