

**TGFb1 Antibody**  
**Purified Mouse Monoclonal Antibody**  
**Catalog # AO1733a**

**Specification**

**TGFb1 Antibody - Product Information**

Application	<b>E, WB, IHC, FC</b>
Primary Accession	<a href="#">P01137</a>
Reactivity	<b>Human</b>
Host	<b>Mouse</b>
Clonality	<b>Monoclonal</b>
Isotype	<b>IgG1</b>
Calculated MW	<b>44.3kDa KDa</b>

**Description**

This gene encodes a member of the transforming growth factor beta (TGFB) family of cytokines, which are multifunctional peptides that regulate proliferation, differentiation, adhesion, migration, and other functions in many cell types. Many cells have TGFB receptors, and the protein positively and negatively regulates many other growth factors. The secreted protein is cleaved into a latency-associated peptide (LAP) and a mature TGFB1 peptide, and is found in either a latent form composed of a TGFB1 homodimer, a LAP homodimer, and a latent TGFB1-binding protein, or in an active form composed of a TGFB1 homodimer. The mature peptide may also form heterodimers with other TGFB family members. This gene is frequently upregulated in tumor cells, and mutations in this gene result in Camurati-Engelmann disease

**Immunogen**

Purified recombinant fragment of human TGFb1 (AA: 62-195) expressed in E. Coli. <br /> <br />

**Formulation**

Purified antibody in PBS with 0.05% sodium azide

**TGFb1 Antibody - Additional Information**

**Gene ID** 7040

**Other Names**

Transforming growth factor beta-1, TGF-beta-1, Latency-associated peptide, LAP, TGFB1, TGFB

**Dilution**

E~~1/10000  
WB~~1/500 - 1/2000  
IHC~~1/200 - 1/1000  
FC~~1/200 - 1/400

**Storage**

Maintain refrigerated at 2-8°C for up to 6 months. For long term storage store at -20°C in small aliquots to prevent freeze-thaw cycles.

**Precautions**

TGFb1 Antibody is for research use only and not for use in diagnostic or therapeutic procedures.

## TGFb1 Antibody - Protein Information

Name TGFB1 ([HGNC:11766](#))

Synonyms TGFB

### Function

Transforming growth factor beta-1 proprotein: Precursor of the Latency-associated peptide (LAP) and Transforming growth factor beta-1 (TGF-beta-1) chains, which constitute the regulatory and active subunit of TGF-beta-1, respectively.

### Cellular Location

[Latency-associated peptide]: Secreted, extracellular space, extracellular matrix

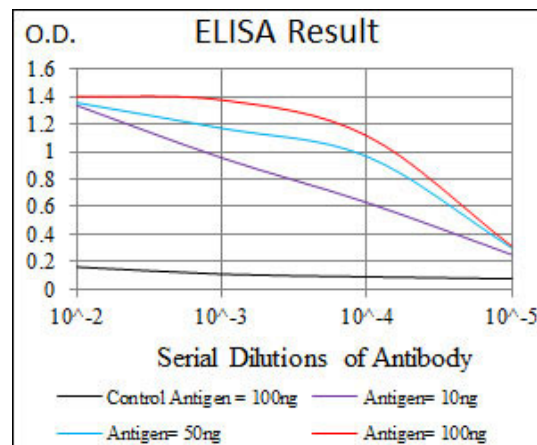
### Tissue Location

Highly expressed in bone (PubMed:11746498, PubMed:17827158). Abundantly expressed in articular cartilage and chondrocytes and is increased in osteoarthritis (OA) (PubMed:11746498, PubMed:17827158). Colocalizes with ASPN in chondrocytes within OA lesions of articular cartilage (PubMed:17827158)

## TGFb1 Antibody - Protocols

Provided below are standard protocols that you may find useful for product applications.

- [Western Blot](#)
- [Blocking Peptides](#)
- [Dot Blot](#)
- [Immunohistochemistry](#)
- [Immunofluorescence](#)
- [Immunoprecipitation](#)
- [Flow Cytometry](#)
- [Cell Culture](#)



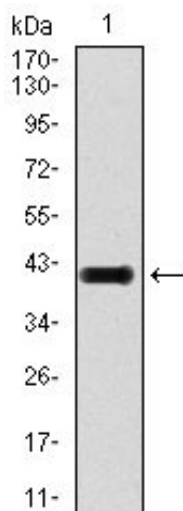


Figure 1: Western blot analysis using TGFb1 mAb against human TGFb1 recombinant protein. (Expected MW is 41 kDa)

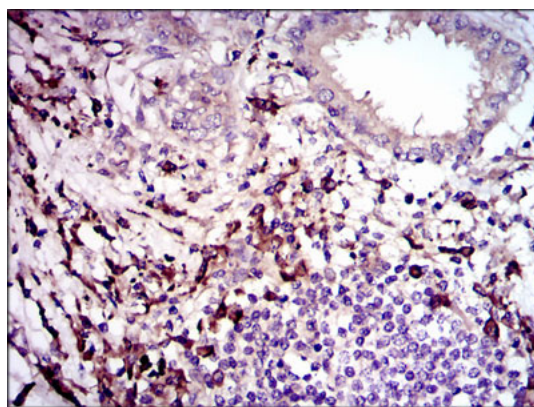


Figure 2: Immunohistochemical analysis of paraffin-embedded lung cancer tissues using TGFb1 mouse mAb with DAB staining.

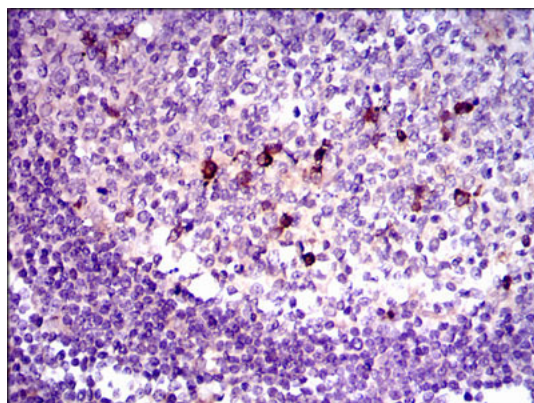


Figure 3: Immunohistochemical analysis of paraffin-embedded lymphoid tissue tissues using TGFb1 mouse mAb with DAB staining.

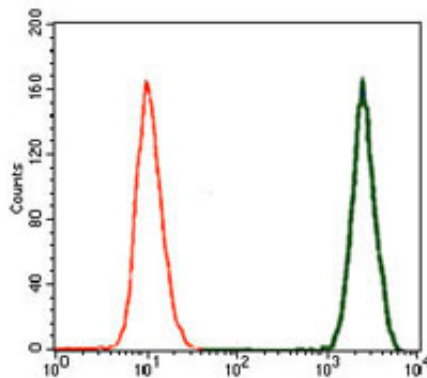


Figure 4: Flow cytometric analysis of A549 cells using TGFb1 mouse mAb (green) and negative control (red).

### TGFb1 Antibody - References

1. Cell. 2011 Oct 28;147(3):565-76. 2. Kobe J Med Sci. 2011 May 11;56(6):E242-52.