

**MAP2 Antibody**  
**Purified Mouse Monoclonal Antibody**  
**Catalog # AO1727a**

**Specification**

**MAP2 Antibody - Product Information**

Application	<b>E, WB, FC</b>
Primary Accession	<a href="#">P11137</a>
Reactivity	<b>Human</b>
Host	<b>Mouse</b>
Clonality	<b>Monoclonal</b>
Isotype	<b>IgG1</b>
Calculated MW	<b>199kDa KDa</b>

**Description**

This gene encodes a protein that belongs to the microtubule-associated protein family. The proteins of this family are thought to be involved in microtubule assembly, which is an essential step in neurogenesis. The products of similar genes in rat and mouse are neuron-specific cytoskeletal proteins that are enriched in dendrites, implicating a role in determining and stabilizing dendritic shape during neuron development. A number of alternatively spliced variants encoding distinct isoforms have been described.

**Immunogen**

Purified recombinant fragment of human MAP2 (AA: 24-123) expressed in E. Coli. <br />

**Formulation**

Purified antibody in PBS with 0.05% sodium azide

**MAP2 Antibody - Additional Information**

**Gene ID** 4133

**Other Names**

Microtubule-associated protein 2, MAP-2, MAP2

**Dilution**

E~~1/10000  
WB~~1/500 - 1/2000  
FC~~1/200 - 1/400

**Storage**

Maintain refrigerated at 2-8°C for up to 6 months. For long term storage store at -20°C in small aliquots to prevent freeze-thaw cycles.

**Precautions**

MAP2 Antibody is for research use only and not for use in diagnostic or therapeutic procedures.

**MAP2 Antibody - Protein Information**

**Name** MAP2

**Function**

The exact function of MAP2 is unknown but MAPs may stabilize the microtubules against depolymerization. They also seem to have a stiffening effect on microtubules.

**Cellular Location**

Cytoplasm, cytoskeleton. Cell projection, dendrite {ECO:0000250|UniProtKB:P20357}

**MAP2 Antibody - Protocols**

Provided below are standard protocols that you may find useful for product applications.

- [Western Blot](#)
- [Blocking Peptides](#)
- [Dot Blot](#)
- [Immunohistochemistry](#)
- [Immunofluorescence](#)
- [Immunoprecipitation](#)
- [Flow Cytometry](#)
- [Cell Culture](#)

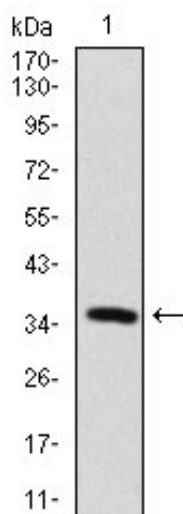
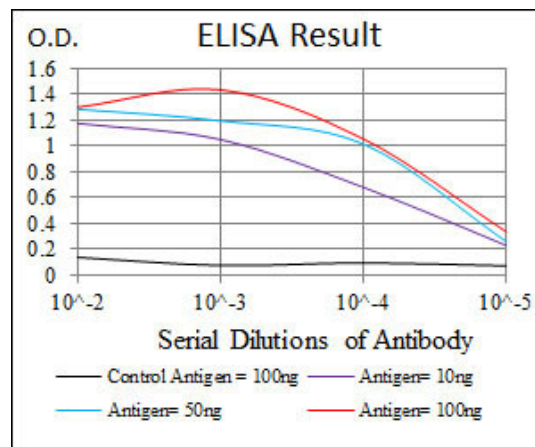


Figure 1: Western blot analysis using MAP2 mAb against human MAP2 recombinant protein.

(Expected MW is 36.1 kDa)

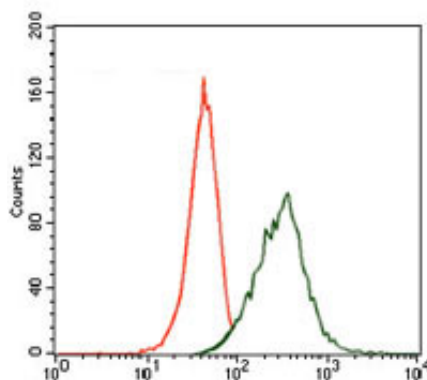


Figure 2: Flow cytometric analysis of HeLa cells using MAP2 mouse mAb (green) and negative control (red).

### MAP2 Antibody - References

1. J Biol Chem. 2010 Jan 1;285(1):242-54.
2. Am J Clin Pathol. 2009 May;131(5):710-4.