

KLK3 Antibody
Purified Mouse Monoclonal Antibody
Catalog # AO1721a

Specification

KLK3 Antibody - Product Information

Application	E, WB, FC
Primary Accession	P07288
Reactivity	Human
Host	Mouse
Clonality	Monoclonal

Description

Kallikreins are a subgroup of serine proteases having diverse physiological functions. Growing evidence suggests that many kallikreins are implicated in carcinogenesis and some have potential as novel cancer and other disease biomarkers. This gene is one of the fifteen kallikrein subfamily members located in a cluster on chromosome 19. Its protein product is a protease present in seminal plasma. It is thought to function normally in the liquefaction of seminal coagulum, presumably by hydrolysis of the high molecular mass seminal vesicle protein. Serum level of this protein, called PSA in the clinical setting, is useful in the diagnosis and monitoring of prostatic carcinoma. Alternate splicing of this gene generates several transcript variants encoding different isoforms.

Immunogen

Purified recombinant fragment of human KLK3 expressed in E. Coli.

Formulation

Ascitic fluid containing 0.03% sodium azide.

KLK3 Antibody - Additional Information

Gene ID 354

Other Names

Prostate-specific antigen, PSA, 3.4.21.77, Gamma-seminoprotein, Semin, Kallikrein-3, P-30 antigen, Semenogelase, KLK3, APS

Dilution

E~~1/10000
WB~~1/500 - 1/2000
FC~~1/200 - 1/400

Storage

Maintain refrigerated at 2-8°C for up to 6 months. For long term storage store at -20°C in small aliquots to prevent freeze-thaw cycles.

Precautions

KLK3 Antibody is for research use only and not for use in diagnostic or therapeutic procedures.

KLK3 Antibody - Protein Information

Name KLK3

Synonyms APS

Function

Hydrolyzes semenogelin-1 thus leading to the liquefaction of the seminal coagulum.

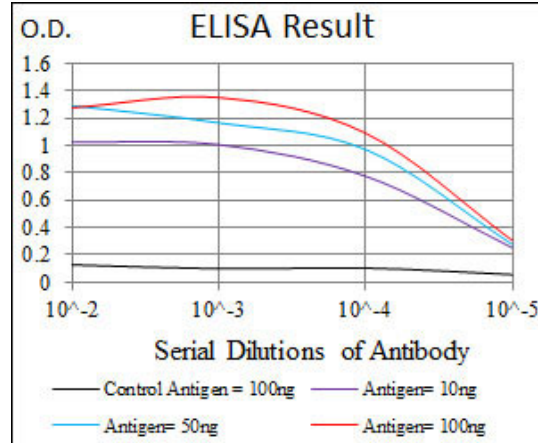
Cellular Location

Secreted.

KLK3 Antibody - Protocols

Provided below are standard protocols that you may find useful for product applications.

- [Western Blot](#)
- [Blocking Peptides](#)
- [Dot Blot](#)
- [Immunohistochemistry](#)
- [Immunofluorescence](#)
- [Immunoprecipitation](#)
- [Flow Cytometry](#)
- [Cell Culture](#)



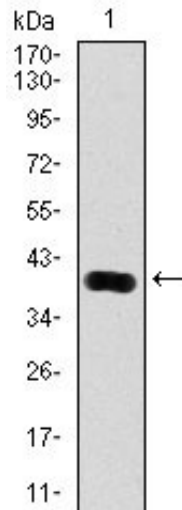


Figure 1: Western blot analysis using KLK3 mAb against human KLK3 (AA: 109-216) recombinant protein. (Expected MW is 37.2 kDa)

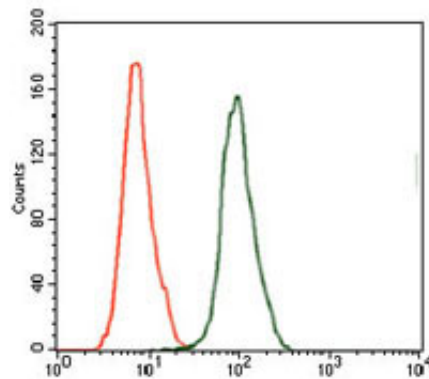


Figure 2: Flow cytometric analysis of HeLa cells using KLK3 mouse mAb (green) and negative control (red).

KLK3 Antibody - References

1. Oncogene. 2010 Jan 14;29(2):188-200.
2. Biol Chem. 2009 Sep;390(9):921-9.