

EIF4B Antibody
Purified Mouse Monoclonal Antibody
Catalog # AO1715a**Specification****EIF4B Antibody - Product Information**

Application	E, WB, FC, IF, IHC
Primary Accession	P23588
Reactivity	Human, Mouse
Host	Mouse
Clonality	Monoclonal
Isotype	IgG2b
Calculated MW	80kDa KDa

Description

The eukaryotic translation initiation factor 4B (eIF4B) plays a critical role in recruiting the 40S ribosomal subunit to the mRNA. It functions in close association with eIF4F and eIF4A. It binds near the 5'-terminal cap of mRNA in the presence of eIF4F and ATP. It promotes the ATPase activity and the ATP-dependent RNA unwinding activity of both eIF4A and eIF4F

Immunogen

Purified recombinant fragment of human EIF4B expressed in E. Coli.

Formulation

Purified antibody in PBS with 0.05% sodium azide

EIF4B Antibody - Additional Information

Gene ID 1975

Other Names

Eukaryotic translation initiation factor 4B, eIF-4B, EIF4B

Dilution

E~~1/10000
WB~~1/500 - 1/2000
FC~~1/200 - 1/400
IF~~1/200 - 1/1000
IHC~~1/200 - 1/1000

Storage

Maintain refrigerated at 2-8°C for up to 6 months. For long term storage store at -20°C in small aliquots to prevent freeze-thaw cycles.

Precautions

EIF4B Antibody is for research use only and not for use in diagnostic or therapeutic procedures.

EIF4B Antibody - Protein Information

Name EIF4B

Function

Required for the binding of mRNA to ribosomes. Functions in close association with EIF4-F and EIF4-A. Binds near the 5'-terminal cap of mRNA in presence of EIF-4F and ATP. Promotes the ATPase activity and the ATP-dependent RNA unwinding activity of both EIF4-A and EIF4-F.

EIF4B Antibody - Protocols

Provided below are standard protocols that you may find useful for product applications.

- [Western Blot](#)
- [Blocking Peptides](#)
- [Dot Blot](#)
- [Immunohistochemistry](#)
- [Immunofluorescence](#)
- [Immunoprecipitation](#)
- [Flow Cytometry](#)
- [Cell Culture](#)

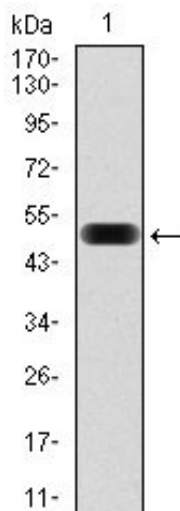
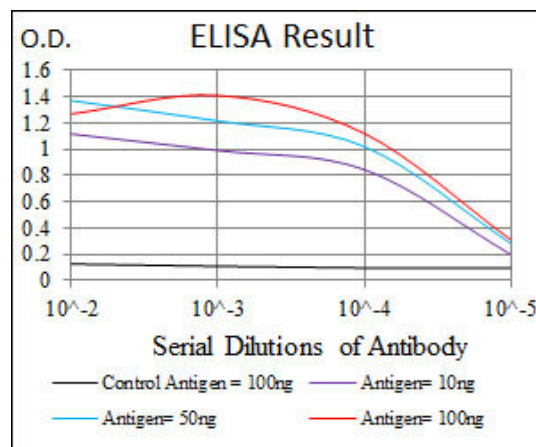


Figure 1: Western blot analysis using EIF4B mAb against human EIF4B (AA: 381-585) recombinant protein. (Expected MW is 48.3 kDa)

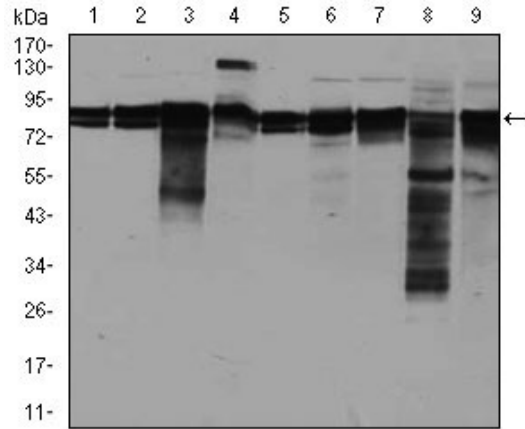


Figure 2: Western blot analysis using EIF4B mouse mAb against A549 (1), A431 (2), HepG2 (3), HEK293 (4), HeLa (5), Jurkat (6), K562 (7), NIH3T3 (8), and MCF-7 (9) cell lysate.

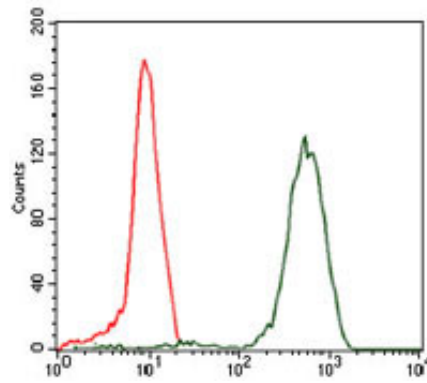


Figure 4: Flow cytometric analysis of HeLa cells using EIF4B mouse mAb (green) and negative control (red).

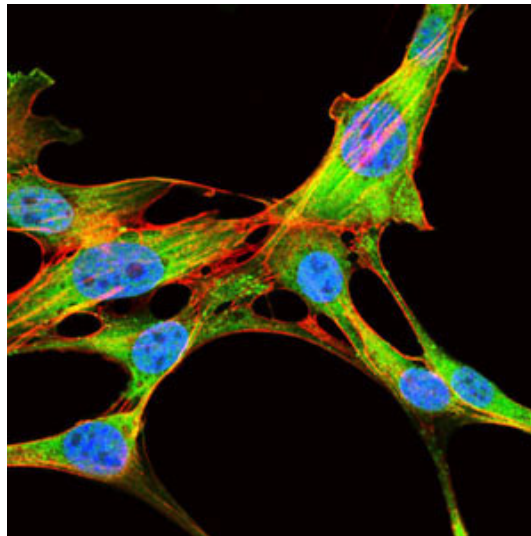


Figure 5 : Immunofluorescence analysis of NIH3T3 cells using EIF4B mouse mAb (green). Blue: DRAQ5 fluorescent DNA dye. Red: Actin filaments have been labeled with Alexa Fluor-555 phalloidin.

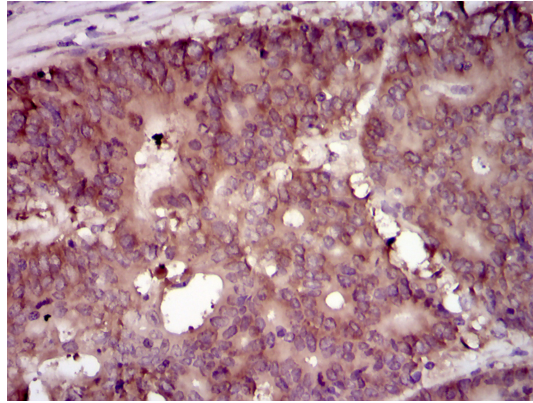


Figure 5: Immunohistochemical analysis of paraffin-embedded colon cancer tissues using EIF4B mouse mAb with DAB staining.

EIF4B Antibody - References

1. Mol Biol Cell. 2009 Jun;20(11):2673-83.
2. EMBO J. 2006 Jun 21;25(12):2781-91.