

MAP1LC3B Antibody
Purified Mouse Monoclonal Antibody
Catalog # AO1713a

Specification

MAP1LC3B Antibody - Product Information

Application	E, WB, FC
Primary Accession	O9GZQ8
Reactivity	Human
Host	Mouse
Clonality	Monoclonal
Isotype	IgG1
Calculated MW	14.6kDa KDa

Description

The product of this gene is a subunit of neuronal microtubule-associated MAP1A and MAP1B proteins, which are involved in microtubule assembly and important for neurogenesis. Studies on the rat homolog implicate a role for this gene in autophagy, a process that involves the bulk degradation of cytoplasmic component.

Immunogen

Purified recombinant fragment of human MAP1LC3B expressed in E. Coli.

Formulation

Ascitic fluid containing 0.03% sodium azide.

MAP1LC3B Antibody - Additional Information

Gene ID 81631

Other Names

Microtubule-associated proteins 1A/1B light chain 3B, Autophagy-related protein LC3 B, Autophagy-related ubiquitin-like modifier LC3 B, MAP1 light chain 3-like protein 2, MAP1A/MAP1B light chain 3 B, MAP1A/MAP1B LC3 B, Microtubule-associated protein 1 light chain 3 beta, MAP1LC3B, MAP1ALC3

Dilution

E~~1/10000
WB~~1/500 - 1/2000
FC~~1/200 - 1/400

Storage

Maintain refrigerated at 2-8°C for up to 6 months. For long term storage store at -20°C in small aliquots to prevent freeze-thaw cycles.

Precautions

MAP1LC3B Antibody is for research use only and not for use in diagnostic or therapeutic procedures.

MAP1LC3B Antibody - Protein Information

Name MAP1LC3B ([HGNC:13352](#))

Synonyms MAP1ALC3

Function

Ubiquitin-like modifier involved in formation of autophagosomal vacuoles (autophagosomes) (PubMed:[20418806](http://www.uniprot.org/citations/20418806)), PubMed:[23209295](http://www.uniprot.org/citations/23209295), PubMed:[28017329](http://www.uniprot.org/citations/28017329)). Plays a role in mitophagy which contributes to regulate mitochondrial quantity and quality by eliminating the mitochondria to a basal level to fulfill cellular energy requirements and preventing excess ROS production (PubMed:[23209295](http://www.uniprot.org/citations/23209295), PubMed:[28017329](http://www.uniprot.org/citations/28017329)). In response to cellular stress and upon mitochondria fission, binds C-18 ceramides and anchors autophagolysosomes to outer mitochondrial membranes to eliminate damaged mitochondria (PubMed:[22922758](http://www.uniprot.org/citations/22922758)). While LC3s are involved in elongation of the phagophore membrane, the GABARAP/GATE-16 subfamily is essential for a later stage in autophagosome maturation (PubMed:[20418806](http://www.uniprot.org/citations/20418806), PubMed:[23209295](http://www.uniprot.org/citations/23209295), PubMed:[28017329](http://www.uniprot.org/citations/28017329)). Promotes primary ciliogenesis by removing OFD1 from centriolar satellites via the autophagic pathway (PubMed:[24089205](http://www.uniprot.org/citations/24089205)). Through its interaction with the reticulophagy receptor TEX264, participates in the remodeling of subdomains of the endoplasmic reticulum into autophagosomes upon nutrient stress, which then fuse with lysosomes for endoplasmic reticulum turnover (PubMed:[31006537](http://www.uniprot.org/citations/31006537), PubMed:[31006538](http://www.uniprot.org/citations/31006538)). Upon nutrient stress, directly recruits cofactor JMY to the phagophore membrane surfaces and promotes JMY's actin nucleation activity and autophagosome biogenesis during autophagy (PubMed:[30420355](http://www.uniprot.org/citations/30420355)).

Cellular Location

Cytoplasmic vesicle, autophagosome membrane; Lipid-anchor Endomembrane system; Lipid-anchor Mitochondrion membrane; Lipid-anchor. Cytoplasm, cytoskeleton {ECO:0000250|UniProtKB:Q9CQV6}. Cytoplasmic vesicle. Note=LC3-II binds to the autophagic membranes. LC3-II localizes with the mitochondrial inner membrane during Parkin-mediated mitophagy (PubMed:28017329). Localizes also to discrete punctae along the ciliary axoneme

Tissue Location

Most abundant in heart, brain, skeletal muscle and testis. Little expression observed in liver

MAP1LC3B Antibody - Protocols

Provided below are standard protocols that you may find useful for product applications.

- [Western Blot](#)
- [Blocking Peptides](#)
- [Dot Blot](#)
- [Immunohistochemistry](#)
- [Immunofluorescence](#)
- [Immunoprecipitation](#)

- [Flow Cytometry](#)
- [Cell Culture](#)

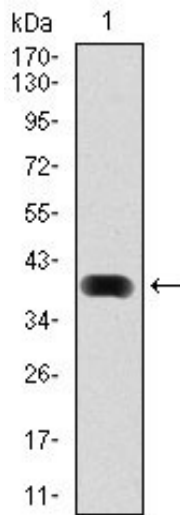
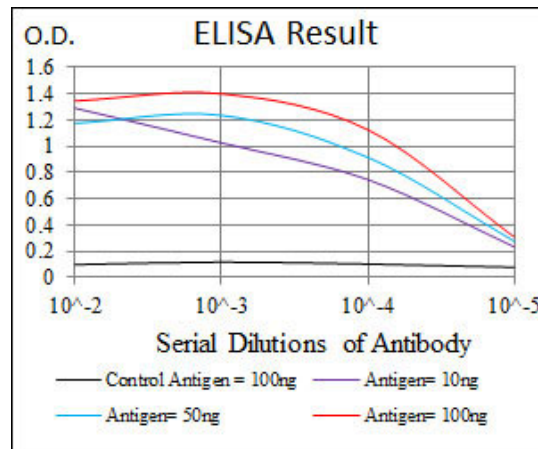


Figure 1: Western blot analysis using MAP1LC3B mAb against human MAP1LC3B (AA: 1-125) recombinant protein. (Expected MW is 40.2 kDa)

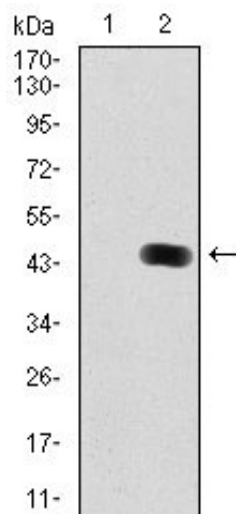


Figure 2: Western blot analysis using MAP1LC3B mAb against HEK293 (1) and MAP1LC3B (AA: 1-125)-hlgGfc transfected HEK293 (2) cell lysate.

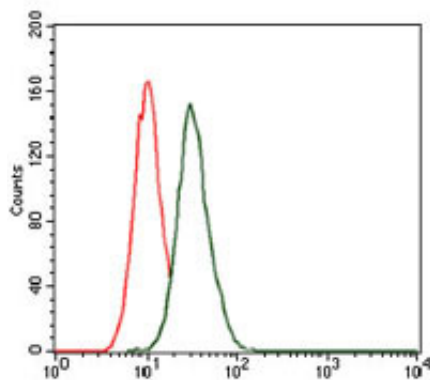


Figure 3: Flow cytometric analysis of HeLa cells using MAP1LC3B mouse mAb (green) and negative control (red).

MAP1LC3B Antibody - References

1. J Clin Lab Anal. 2009;23(4):249-58.
2. Ai Zheng. 2008 Jan;27(1):25-9.