

**SMAD2 Antibody**  
**Purified Mouse Monoclonal Antibody**  
**Catalog # AO1592a****Specification****SMAD2 Antibody - Product Information**

|                   |                           |
|-------------------|---------------------------|
| Application       | <b>E, WB, IHC, IF, FC</b> |
| Primary Accession | <a href="#">Q15796</a>    |
| Reactivity        | <b>Human</b>              |
| Host              | <b>Mouse</b>              |
| Clonality         | <b>Monoclonal</b>         |
| Isotype           | <b>IgG1</b>               |
| Calculated MW     | <b>52kDa KDa</b>          |

**Description**

The protein encoded by this gene belongs to the SMAD, a family of proteins similar to the gene products of the Drosophila gene 'mothers against decapentaplegic' (Mad) and the C. elegans gene Sma. SMAD proteins are signal transducers and transcriptional modulators that mediate multiple signaling pathways. This protein mediates the signal of the transforming growth factor (TGF)-beta, and thus regulates multiple cellular processes, such as cell proliferation, apoptosis, and differentiation. This protein is recruited to the TGF-beta receptors through its interaction with the SMAD anchor for receptor activation (SARA) protein. In response to TGF-beta signal, this protein is phosphorylated by the TGF-beta receptors. The phosphorylation induces the dissociation of this protein with SARA and the association with the family member SMAD4. The association with SMAD4 is important for the translocation of this protein into the nucleus, where it binds to target promoters and forms a transcription repressor complex with other cofactors. This protein can also be phosphorylated by activin type 1 receptor kinase, and mediates the signal from the activin. Alternatively spliced transcript variants encoding the same protein have been observed.

**Immunogen**

Purified recombinant fragment of human SMAD2 expressed in E. Coli. <br />

**Formulation**

Ascitic fluid containing 0.03% sodium azide.

**SMAD2 Antibody - Additional Information**

**Gene ID** 4087

**Other Names**

Mothers against decapentaplegic homolog 2, MAD homolog 2, Mothers against DPP homolog 2, JV18-1, Mad-related protein 2, hMAD-2, SMAD family member 2, SMAD 2, Smad2, hSMAD2, SMAD2, MADH2, MADR2

**Dilution**

E~~1/10000  
WB~~1/500 - 1/2000  
IHC~~1/200 - 1/1000  
IF~~1/200 - 1/1000  
FC~~1/200 - 1/400

### Storage

Maintain refrigerated at 2-8°C for up to 6 months. For long term storage store at -20°C in small aliquots to prevent freeze-thaw cycles.

### Precautions

SMAD2 Antibody is for research use only and not for use in diagnostic or therapeutic procedures.

## SMAD2 Antibody - Protein Information

**Name** SMAD2

**Synonyms** MADH2, MADR2

### Function

Receptor-regulated SMAD (R-SMAD) that is an intracellular signal transducer and transcriptional modulator activated by TGF-beta (transforming growth factor) and activin type 1 receptor kinases. Binds the TRE element in the promoter region of many genes that are regulated by TGF-beta and, on formation of the SMAD2/SMAD4 complex, activates transcription. Promotes TGFβ1-mediated transcription of odontoblastic differentiation genes in dental papilla cells (By similarity). Positively regulates PDPK1 kinase activity by stimulating its dissociation from the 14-3-3 protein YWHAQ which acts as a negative regulator. May act as a tumor suppressor in colorectal carcinoma (PubMed:<a href="http://www.uniprot.org/citations/8752209" target="\_blank">8752209</a>).

### Cellular Location

Cytoplasm. Nucleus. Note=Cytoplasmic and nuclear in the absence of TGF-beta. On TGF-beta stimulation, migrates to the nucleus when complexed with SMAD4 or with IPO7 (PubMed:21145499, PubMed:9865696). On dephosphorylation by phosphatase PPM1A, released from the SMAD2/SMAD4 complex, and exported out of the nucleus by interaction with RANBP1 (PubMed:16751101, PubMed:19289081). Localized mainly to the nucleus in the early stages of embryo development with expression becoming evident in the cytoplasm at the blastocyst and epiblast stages (By similarity). {ECO:0000250|UniProtKB:Q62432, ECO:0000269|PubMed:16751101, ECO:0000269|PubMed:19289081, ECO:0000269|PubMed:21145499, ECO:0000269|PubMed:9865696}

### Tissue Location

Expressed at high levels in skeletal muscle, endothelial cells, heart and placenta.

## SMAD2 Antibody - Protocols

Provided below are standard protocols that you may find useful for product applications.

- [Western Blot](#)
- [Blocking Peptides](#)
- [Dot Blot](#)
- [Immunohistochemistry](#)
- [Immunofluorescence](#)
- [Immunoprecipitation](#)
- [Flow Cytometry](#)
- [Cell Culture](#)

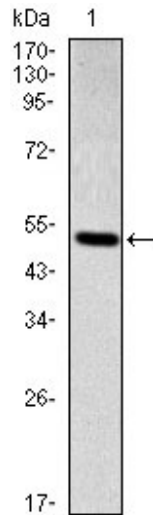
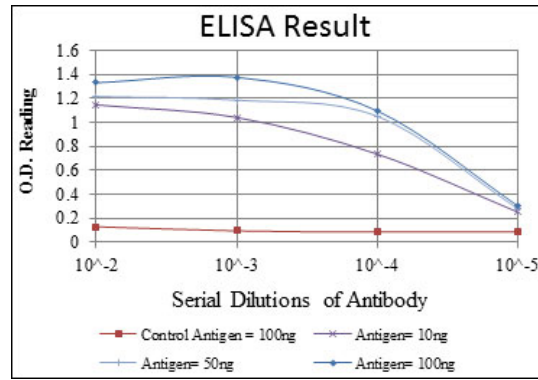


Figure 1: Western blot analysis using SMAD2 mAb against human SMAD2 (AA: 20-254) recombinant protein. (Expected MW is 52.2 kDa)

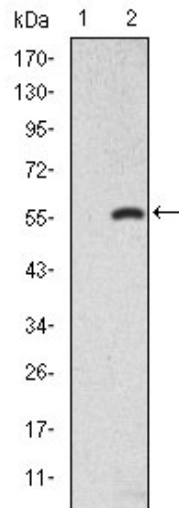


Figure 2: Western blot analysis using SMAD2 mAb against HEK293 (1) and SMAD2(AA: 20-254)-hlgGfc transfected HEK293 (2) cell lysate.

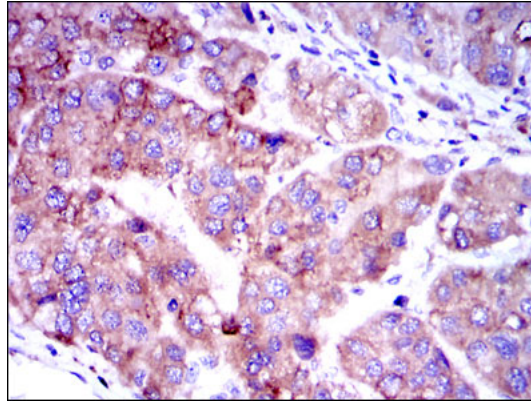


Figure 3: Immunohistochemical analysis of paraffin-embedded human liver cancer tissues using SMAD2 mouse mAb with DAB staining.

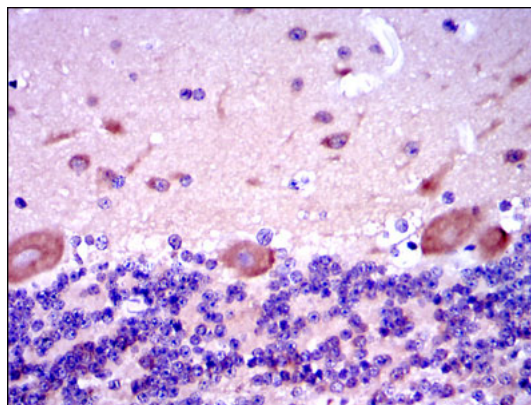


Figure 4: Immunohistochemical analysis of paraffin-embedded human cerebellum tissues using SMAD2 mouse mAb with DAB staining.

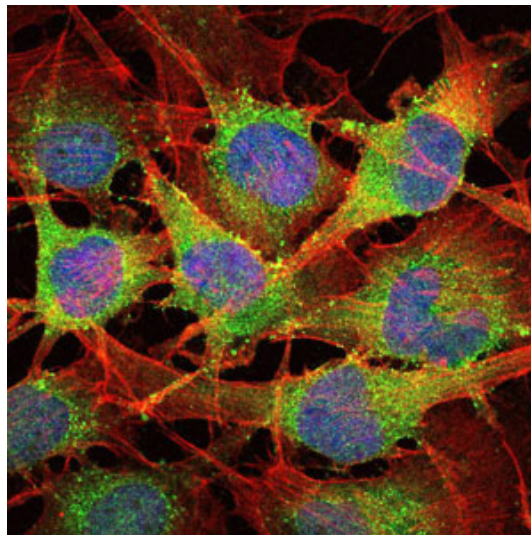


Figure 5: Immunofluorescence analysis of U251 cells using SMAD2 mouse mAb (green). Blue: DRAQ5 fluorescent DNA dye. Red: Actin filaments have been labeled with Alexa Fluor-555 phalloidin.

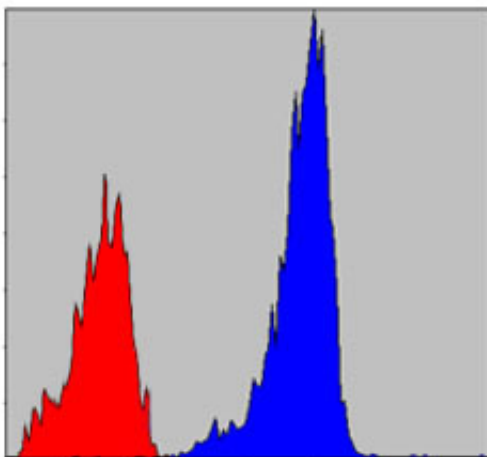


Figure 6: Flow cytometric analysis of NIH/3T3 cells using SMAD2 mouse mAb (blue) and negative control (red).

#### SMAD2 Antibody - References

1. J Biol Chem. 2009 Dec 4;284(49):34145-56.
2. Cloning Stem Cells. 2009 Sep;11(3):427-35.