

CRKL Antibody
Purified Mouse Monoclonal Antibody
Catalog # AO1581a**Specification****CRKL Antibody - Product Information**

Application	E, WB, FC
Primary Accession	P46109
Reactivity	Human
Host	Mouse
Clonality	Monoclonal
Isotype	IgG1
Calculated MW	39kDa KDa

Description

This gene encodes a protein kinase containing SH2 and SH3 (src homology) domains which has been shown to activate the RAS and JUN kinase signaling pathways and transform fibroblasts in a RAS-dependent fashion. It is a substrate of the BCR-ABL tyrosine kinase, plays a role in fibroblast transformation by BCR-ABL, and may be oncogenic.

Immunogen

Purified recombinant fragment of human CRKL expressed in E. Coli.

Formulation

Ascitic fluid containing 0.03% sodium azide.

CRKL Antibody - Additional Information

Gene ID 1399

Other Names

Crk-like protein, CRKL

Dilution

E~~1/10000
WB~~1/500 - 1/2000
FC~~1/200 - 1/400

Storage

Maintain refrigerated at 2-8°C for up to 6 months. For long term storage store at -20°C in small aliquots to prevent freeze-thaw cycles.

Precautions

CRKL Antibody is for research use only and not for use in diagnostic or therapeutic procedures.

CRKL Antibody - Protein Information

Name CRKL

Function

May mediate the transduction of intracellular signals.

CRKL Antibody - Protocols

Provided below are standard protocols that you may find useful for product applications.

- [Western Blot](#)
- [Blocking Peptides](#)
- [Dot Blot](#)
- [Immunohistochemistry](#)
- [Immunofluorescence](#)
- [Immunoprecipitation](#)
- [Flow Cytometry](#)
- [Cell Culture](#)

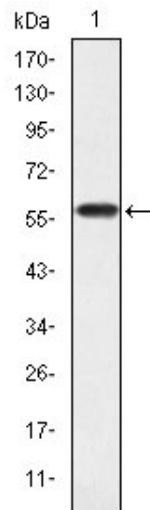
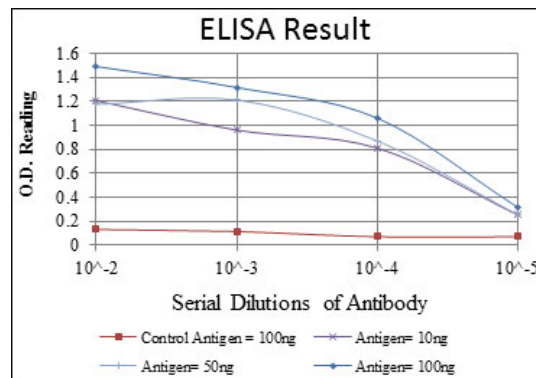


Figure 1: Western blot analysis using CRKL mAb against human CRKL (AA: 100-303) recombinant protein. (Expected MW is 60 kDa)

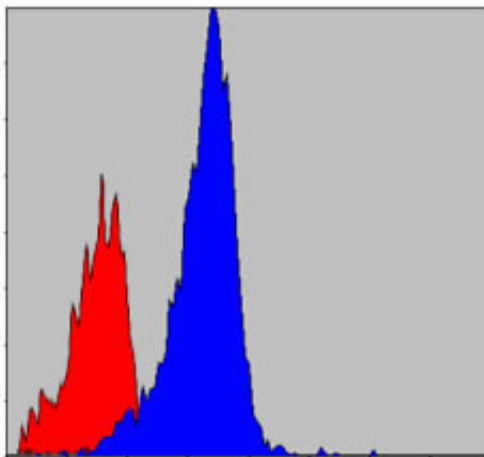


Figure 2: Flow cytometric analysis of NIH/3T3 cells using CRKL mouse mAb (blue) and negative control (red).

CRKL Antibody - References

1. Mol Cell Biol. 2009 Jun;29(11):3076-87.
2. Cell. 2009 Jul 23;138(2):389-403.