

MAP3K5 Antibody
Purified Mouse Monoclonal Antibody
Catalog # AO1575a

Specification

MAP3K5 Antibody - Product Information

Application	E, WB, IHC, IF, FC
Primary Accession	O99683
Reactivity	Human
Host	Mouse
Clonality	Monoclonal
Isotype	IgG1
Calculated MW	55kDa KDa

Description

Mitogen-activated protein kinase (MAPK) signaling cascades include MAPK or extracellular signal-regulated kinase (ERK), MAPK kinase (MKK or MEK), and MAPK kinase kinase (MAPKKK or MEKK). MAPKK kinase/MEKK phosphorylates and activates its downstream protein kinase, MAPK kinase/MEK, which in turn activates MAPK. The kinases of these signaling cascades are highly conserved, and homologs exist in yeast, Drosophila, and mammalian cells. MAPKKK5 contains 1,374 amino acids with all 11 kinase subdomains. Northern blot analysis shows that MAPKKK5 transcript is abundantly expressed in human heart and pancreas. The MAPKKK5 protein phosphorylates and activates MKK4 (aliases SERK1, MAPKK4) in vitro, and activates c-Jun N-terminal kinase (JNK)/stress-activated protein kinase (SAPK) during transient expression in COS and 293 cells; MAPKKK5 does not activate MAPK/ERK.

Immunogen

Purified recombinant fragment of human MAP3K5 expressed in E. Coli.

Formulation

Ascitic fluid containing 0.03% sodium azide.

MAP3K5 Antibody - Additional Information

Gene ID 4217

Other Names

Mitogen-activated protein kinase kinase kinase 5, 2.7.11.25, Apoptosis signal-regulating kinase 1, ASK-1, MAPK/ERK kinase kinase 5, MEK kinase 5, MEKK 5, MAP3K5, ASK1, MAPKKK5, MEKK5

Dilution

E~~1/10000
WB~~1/500 - 1/2000
IHC~~1/500 - 1/2000
IF~~1/200 - 1/1000
FC~~1/200 - 1/400

Storage

Maintain refrigerated at 2-8°C for up to 6 months. For long term storage store at -20°C in small aliquots to prevent freeze-thaw cycles.

Precautions

MAP3K5 Antibody is for research use only and not for use in diagnostic or therapeutic procedures.

MAP3K5 Antibody - Protein Information

Name MAP3K5

Synonyms ASK1, MAPKKK5, MEKK5

Function

Serine/threonine kinase which acts as an essential component of the MAP kinase signal transduction pathway. Plays an important role in the cascades of cellular responses evoked by changes in the environment. Mediates signaling for determination of cell fate such as differentiation and survival. Plays a crucial role in the apoptosis signal transduction pathway through mitochondria-dependent caspase activation. MAP3K5/ASK1 is required for the innate immune response, which is essential for host defense against a wide range of pathogens. Mediates signal transduction of various stressors like oxidative stress as well as by receptor-mediated inflammatory signals, such as the tumor necrosis factor (TNF) or lipopolysaccharide (LPS). Once activated, acts as an upstream activator of the MKK/JNK signal transduction cascade and the p38 MAPK signal transduction cascade through the phosphorylation and activation of several MAP kinase kinases like MAP2K4/SEK1, MAP2K3/MKK3, MAP2K6/MKK6 and MAP2K7/MKK7. These MAP2Ks in turn activate p38 MAPKs and c-jun N-terminal kinases (JNKs). Both p38 MAPK and JNKs control the transcription factors activator protein-1 (AP-1).

Cellular Location

Cytoplasm. Endoplasmic reticulum. Note=Interaction with 14-3-3 proteins alters the distribution of MAP3K5/ASK1 and restricts it to the perinuclear endoplasmic reticulum region

Tissue Location

Abundantly expressed in heart and pancreas.

MAP3K5 Antibody - Protocols

Provided below are standard protocols that you may find useful for product applications.

- [Western Blot](#)
- [Blocking Peptides](#)
- [Dot Blot](#)
- [Immunohistochemistry](#)
- [Immunofluorescence](#)
- [Immunoprecipitation](#)
- [Flow Cytometry](#)
- [Cell Culture](#)

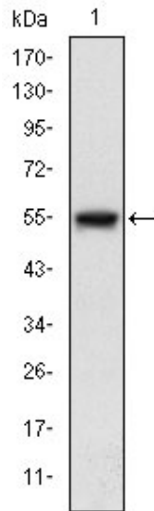
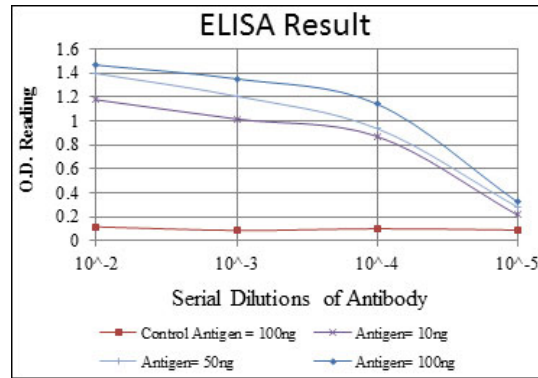


Figure 1: Western blot analysis using MAP3K5 mAb against human MAP3K5 (AA: 922-1108) recombinant protein. (Expected MW is 46.5 kDa)

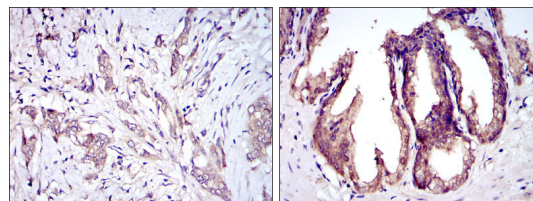


Figure 2: Immunohistochemical analysis of paraffin-embedded breast cancer tissues (left) and prostate tissues (right) using MAP3K5 mouse mAb with DAB staining.

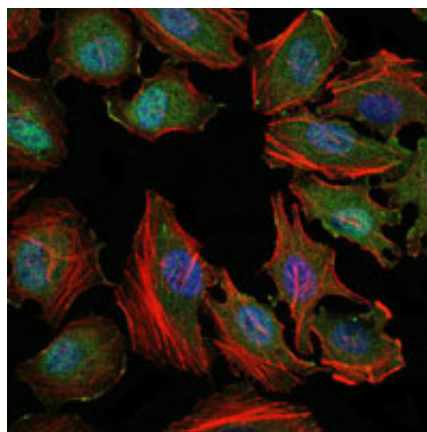


Figure 3: Immunofluorescence analysis of HeLa cells using MAP3K5 mouse mAb (green). Blue: DAPI staining of nuclei.

DRAQ5 fluorescent DNA dye. Red: Actin filaments have been labeled with Alexa Fluor-555 phalloidin.

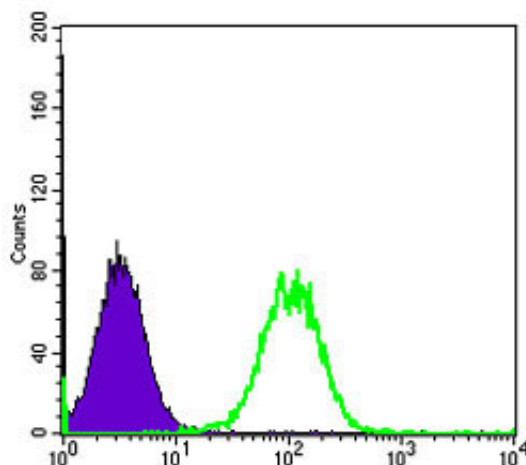


Figure 4: Flow cytometric analysis of Hela cells using MAP3K5 mouse mAb (green) and negative control (purple).

MAP3K5 Antibody - References

1. Mol Cancer. 2009 Dec 27;8:130.
2. J Biol Chem. 2009 Oct 30;284(44):30372-82.