

**ApoB Antibody**  
**Purified Mouse Monoclonal Antibody**  
**Catalog # AO1564a****Specification****ApoB Antibody - Product Information**

Application	<b>E, WB, IF, FC</b>
Primary Accession	<a href="#">P04114</a>
Reactivity	<b>Human</b>
Host	<b>Mouse</b>
Clonality	<b>Monoclonal</b>
Isotype	<b>IgG1</b>
Calculated MW	<b>516kDa KDa</b>

**Description**

This gene product is the main apolipoprotein of chylomicrons and low density lipoproteins. It occurs in plasma as two main isoforms, apoB-48 and apoB-100: the former is synthesized exclusively in the gut and the latter in the liver. The intestinal and the hepatic forms of apoB are encoded by a single gene from a single, very long mRNA. The two isoforms share a common N-terminal sequence. The shorter apoB-48 protein is produced after RNA editing of the apoB-100 transcript at residue 2180 (CAA->UAA), resulting in the creation of a stop codon, and early translation termination. Mutations in this gene or its regulatory region cause hypobetalipoproteinemia, normotriglyceridemic hypobetalipoproteinemia, and hypercholesterolemia due to ligand-defective apoB, diseases affecting plasma cholesterol and apoB levels.

**Immunogen**

Purified recombinant fragment of human ApoB expressed in E. Coli. <br />

**Formulation**

Ascitic fluid containing 0.03% sodium azide.

**ApoB Antibody - Additional Information**

**Gene ID** 338

**Other Names**

Apolipoprotein B-100, Apo B-100, Apolipoprotein B-48, Apo B-48, APOB

**Dilution**

E~~1/10000

WB~~1/500 - 1/2000

IF~~1/200 - 1/1000

FC~~1/200 - 1/400

**Storage**

Maintain refrigerated at 2-8°C for up to 6 months. For long term storage store at -20°C in small aliquots to prevent freeze-thaw cycles.

**Precautions**

ApoB Antibody is for research use only and not for use in diagnostic or therapeutic procedures.

## ApoB Antibody - Protein Information

**Name** APOB

### Function

Apolipoprotein B is a major protein constituent of chylomicrons (apo B-48), LDL (apo B-100) and VLDL (apo B-100). Apo B- 100 functions as a recognition signal for the cellular binding and internalization of LDL particles by the apoB/E receptor.

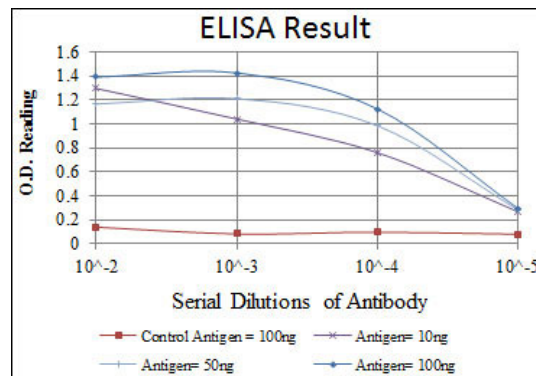
### Cellular Location

Cytoplasm. Secreted. Lipid droplet

## ApoB Antibody - Protocols

Provided below are standard protocols that you may find useful for product applications.

- [Western Blot](#)
- [Blocking Peptides](#)
- [Dot Blot](#)
- [Immunohistochemistry](#)
- [Immunofluorescence](#)
- [Immunoprecipitation](#)
- [Flow Cytometry](#)
- [Cell Culture](#)



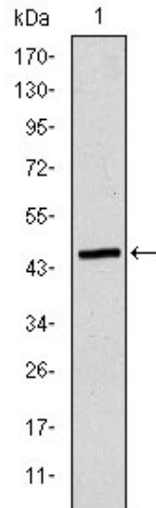


Figure 1: Western blot analysis using ApoB mAb against human ApoB (AA: 3900-4110) recombinant protein. (Expected MW is 45 kDa)

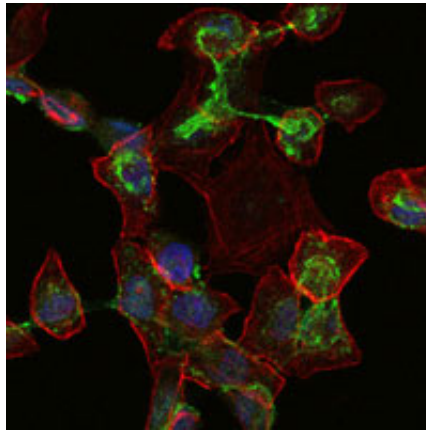


Figure 2: Immunofluorescence analysis of HepG2 cells using ApoB mouse mAb (green). Blue: DRAQ5 fluorescent DNA dye. Red: Actin filaments have been labeled with Alexa Fluor-555 phalloidin.

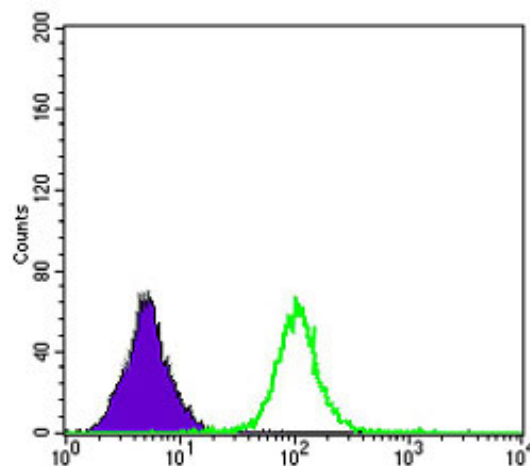


Figure 3: Flow cytometric analysis of serum using ApoB mouse mAb (green) and negative control (purple).

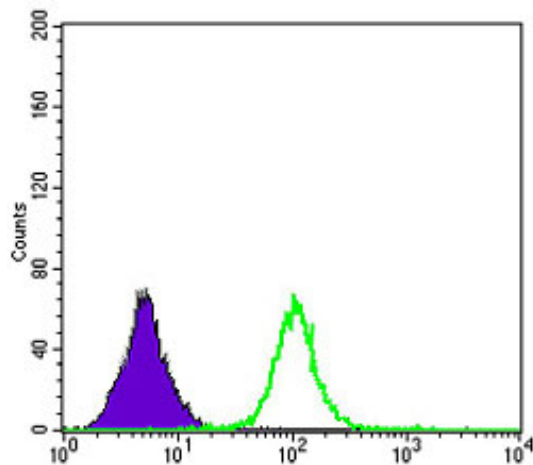


Figure 3: Flow cytometric analysis of PBMC using ApoB mouse mAb (green) and negative control (purple).

#### ApoB Antibody - References

1. Cell Host Microbe. 2008 Dec 11;4(6):555-66.
2. Atherosclerosis. 2009 Sep;206(1):17-30.