

**CST3 Antibody**  
**Purified Mouse Monoclonal Antibody**  
**Catalog # AO1552a****Specification****CST3 Antibody - Product Information**

Application	<b>E, WB</b>
Primary Accession	<a href="#">P01034</a>
Reactivity	<b>Human</b>
Host	<b>Mouse</b>
Clonality	<b>Monoclonal</b>
Isotype	<b>IgG1</b>
Calculated MW	<b>42kDa KDa</b>

**Description**

The cystatin superfamily encompasses proteins that contain multiple cystatin-like sequences. Some of the members are active cysteine protease inhibitors, while others have lost or perhaps never acquired this inhibitory activity. There are three inhibitory families in the superfamily, including the type 1 cystatins (stefins), type 2 cystatins and the kininogens. The type 2 cystatin proteins are a class of cysteine proteinase inhibitors found in a variety of human fluids and secretions, where they appear to provide protective functions. The cystatin locus on chromosome 20 contains the majority of the type 2 cystatin genes and pseudogenes. This gene is located in the cystatin locus and encodes the most abundant extracellular inhibitor of cysteine proteases, which is found in high concentrations in biological fluids and is expressed in virtually all organs of the body. A mutation in this gene has been associated with amyloid angiopathy. Expression of this protein in vascular wall smooth muscle cells is severely reduced in both atherosclerotic and aneurysmal aortic lesions, establishing its role in vascular disease. (provided by RefSeq)Tissue specificity: Expressed in submandibular and sublingual saliva but not in parotid saliva (at protein level). Expressed in various body fluids, such as the cerebrospinal fluid and plasma. Expressed in highest levels in the epididymis, vas deferens, brain, thymus, and ovary and the lowest in the submandibular gland.

**Immunogen**

Purified recombinant fragment of human CST3 expressed in E. Coli. <br />

**Formulation**

Ascitic fluid containing 0.03% sodium azide.

**CST3 Antibody - Additional Information**

**Gene ID** 1471

**Other Names**

Cystatin-C, Cystatin-3, Gamma-trace, Neuroendocrine basic polypeptide, Post-gamma-globulin, CST3

**Dilution**

E~~1/10000

WB~~1/500 - 1/2000

### Storage

Maintain refrigerated at 2-8°C for up to 6 months. For long term storage store at -20°C in small aliquots to prevent freeze-thaw cycles.

### Precautions

CST3 Antibody is for research use only and not for use in diagnostic or therapeutic procedures.

## CST3 Antibody - Protein Information

**Name** CST3

### Function

As an inhibitor of cysteine proteinases, this protein is thought to serve an important physiological role as a local regulator of this enzyme activity.

### Cellular Location

Secreted.

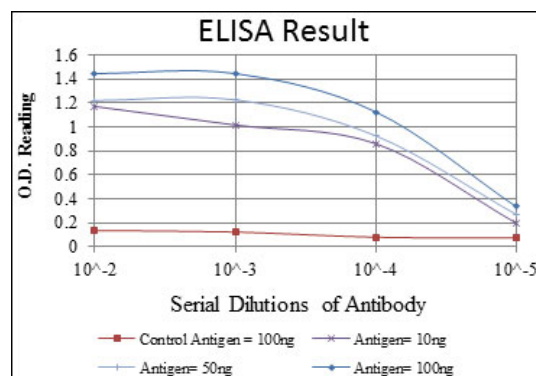
### Tissue Location

Expressed in submandibular and sublingual saliva but not in parotid saliva (at protein level). Expressed in various body fluids, such as the cerebrospinal fluid and plasma. Expressed in highest levels in the epididymis, vas deferens, brain, thymus, and ovary and the lowest in the submandibular gland

## CST3 Antibody - Protocols

Provided below are standard protocols that you may find useful for product applications.

- [Western Blot](#)
- [Blocking Peptides](#)
- [Dot Blot](#)
- [Immunohistochemistry](#)
- [Immunofluorescence](#)
- [Immunoprecipitation](#)
- [Flow Cytometry](#)
- [Cell Culture](#)



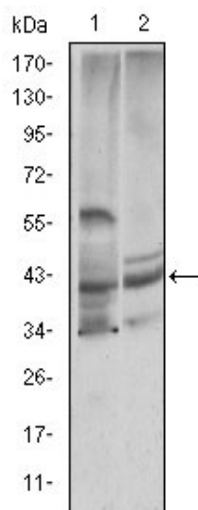


Figure 1: Western blot analysis using CST3 mouse mAb against HeLa (1) and Caco-2 (2) cell lysate.

#### CST3 Antibody - References

1. Dement Geriatr Cogn Disord. 2009;27(4):318-21.
2. Clin J Am Soc Nephrol. 2008 Nov;3(6):1610-4.