

**LHX2 Antibody**  
**Purified Mouse Monoclonal Antibody**  
**Catalog # AO1542a****Specification****LHX2 Antibody - Product Information**

Application	<b>E, WB, IF</b>
Primary Accession	<a href="#">P50458</a>
Reactivity	<b>Human</b>
Host	<b>Mouse</b>
Clonality	<b>Monoclonal</b>
Isotype	<b>IgG1</b>
Calculated MW	<b>44kDa KDa</b>

**Description**

This gene encodes a protein belonging to a large protein family, members of which carry the LIM domain, a unique cysteine-rich zinc-binding domain. The encoded protein may function as a transcriptional regulator. The protein can recapitulate or rescue phenotypes in Drosophila caused by a related protein, suggesting conservation of function during evolution.

**Immunogen**

Purified recombinant fragment of human LHX2 expressed in E. Coli. <br />

**Formulation**

Ascitic fluid containing 0.03% sodium azide.

**LHX2 Antibody - Additional Information**

**Gene ID** 9355

**Other Names**

LIM/homeobox protein Lhx2, Homeobox protein LH-2, LIM homeobox protein 2, LHX2, LH2

**Dilution**

E~~1/10000  
WB~~1/500 - 1/2000  
IF~~1/200 - 1/1000

**Storage**

Maintain refrigerated at 2-8°C for up to 6 months. For long term storage store at -20°C in small aliquots to prevent freeze-thaw cycles.

**Precautions**

LHX2 Antibody is for research use only and not for use in diagnostic or therapeutic procedures.

**LHX2 Antibody - Protein Information**

**Name** LHX2

## Synonyms LH2

### Function

Acts as a transcriptional activator. Stimulates the promoter of the alpha-glycoprotein gene. Transcriptional regulatory protein involved in the control of cell differentiation in developing lymphoid and neural cell types (By similarity).

### Cellular Location

Nucleus.

## LHX2 Antibody - Protocols

Provided below are standard protocols that you may find useful for product applications.

- [Western Blot](#)
- [Blocking Peptides](#)
- [Dot Blot](#)
- [Immunohistochemistry](#)
- [Immunofluorescence](#)
- [Immunoprecipitation](#)
- [Flow Cytometry](#)
- [Cell Culture](#)

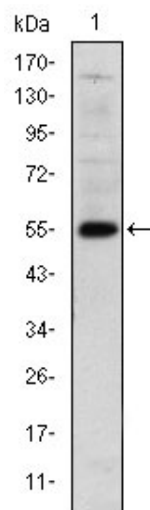
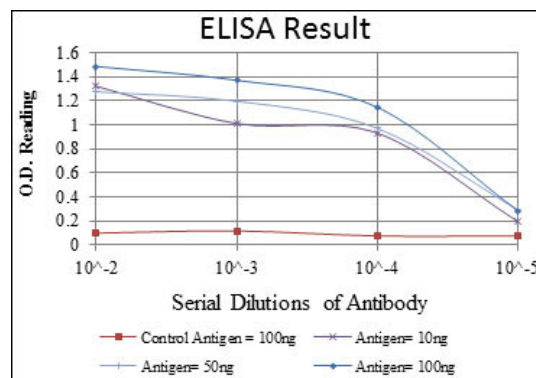


Figure 1: Western blot analysis using LHX2 mAb against human LHX2 (AA: 200-406) recombinant protein. (Expected MW is 55 kDa)

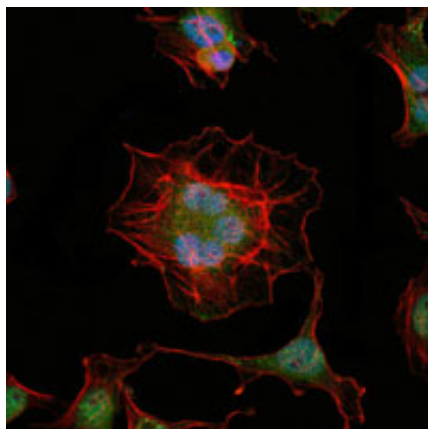


Figure 2: Immunofluorescence analysis of HeLa cells using LHX2 mouse mAb (green). Blue: DRAQ5 fluorescent DNA dye. Red: Actin filaments have been labeled with Alexa Fluor-555 phalloidin.

### LHX2 Antibody - References

1. PLoS One. 2008 Apr 23;3(4):e2025. 2. Science. 2008 Jan 18;319(5861):304-9.