

**MSI2 Antibody**  
**Purified Mouse Monoclonal Antibody**  
**Catalog # AO1530a**

**Specification**

**MSI2 Antibody - Product Information**

Application	<b>E, WB, IHC</b>
Primary Accession	<a href="#">O96DH6</a>
Reactivity	<b>Human</b>
Host	<b>Mouse</b>
Clonality	<b>Monoclonal</b>
Isotype	<b>IgG1</b>
Calculated MW	<b>35kDa KDa</b>

**Description**

Msi2 (musashi homolog 2), also known as MSI2H, is a 328 amino acid protein that localizes to the cytoplasm and contains two RRM (RNA recognition motif) domains. Expressed ubiquitously at low levels, Msi2 functions as an RNA binding protein that, by regulating the expression of target mRNAs, is thought to play a role in the proliferation and maintenance of stem cells within the central nervous system. Msi2 is subject to posttranslational phosphorylation and is upregulated in response to brain injury, suggesting a role in healing and brain tissue regeneration. Chromosomal aberrations involving the Msi2 gene are associated with the progression of chronic myeloid leukemia. Multiple isoforms of Msi2 exist due to alternative splicing events. Tissue specificity: Ubiquitous; detected at low levels.

**Immunogen**

Purified recombinant fragment of human MSI2 expressed in E. Coli.

**Formulation**

Ascitic fluid containing 0.03% sodium azide.

**MSI2 Antibody - Additional Information**

**Gene ID** 124540

**Other Names**

RNA-binding protein Musashi homolog 2, Musashi-2, MSI2

**Dilution**

E~~1/10000

WB~~1/500 - 1/2000

IHC~~1/500 - 1/2000

**Storage**

Maintain refrigerated at 2-8°C for up to 6 months. For long term storage store at -20°C in small aliquots to prevent freeze-thaw cycles.

**Precautions**

MSI2 Antibody is for research use only and not for use in diagnostic or therapeutic procedures.

## MSI2 Antibody - Protein Information

**Name** MSI2

### Function

RNA binding protein that regulates the expression of target mRNAs at the translation level. May play a role in the proliferation and maintenance of stem cells in the central nervous system (By similarity).

### Cellular Location

Cytoplasm. Note=Associated with polysomes.

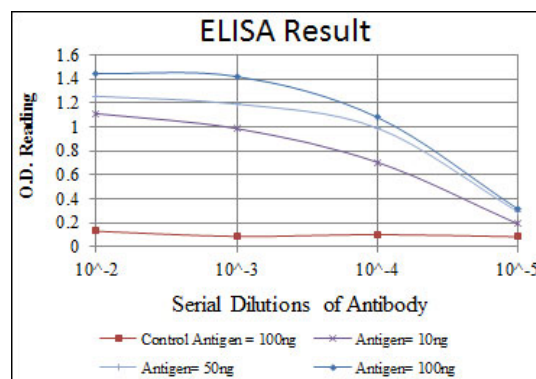
### Tissue Location

Ubiquitous; detected at low levels.

## MSI2 Antibody - Protocols

Provided below are standard protocols that you may find useful for product applications.

- [Western Blot](#)
- [Blocking Peptides](#)
- [Dot Blot](#)
- [Immunohistochemistry](#)
- [Immunofluorescence](#)
- [Immunoprecipitation](#)
- [Flow Cytometry](#)
- [Cell Culture](#)



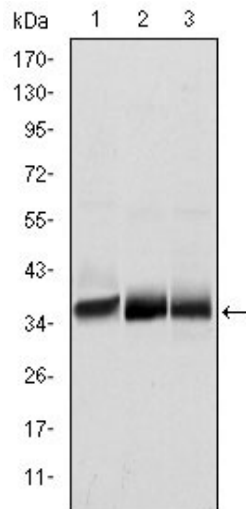


Figure 1: Western blot analysis using MSI2 mouse mAb against NTERA-2 (1), SW620 (2) and T47D (3) cell lysate.

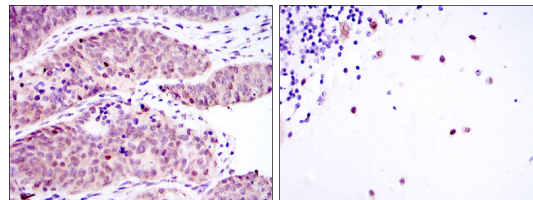


Figure 2: Immunohistochemical analysis of paraffin-embedded ovarian cancer (left) and cerebellum tissues (right) using MSI2 mouse mAb with DAB staining.

### MSI2 Antibody - References

1. Am J Hum Genet. 2009 Nov;85(5):628-42.
2. Haematologica. 2008 Dec;93(12):1903-7.