

**GCG Antibody**  
**Purified Mouse Monoclonal Antibody**  
**Catalog # AO1503a****Specification**

---

**GCG Antibody - Product Information**

|                   |                        |
|-------------------|------------------------|
| Application       | <b>WB</b>              |
| Primary Accession | <a href="#">P01275</a> |
| Reactivity        | <b>Human</b>           |
| Host              | <b>Mouse</b>           |
| Clonality         | <b>Monoclonal</b>      |
| Isotype           | <b>IgG1</b>            |
| Calculated MW     | <b>21kDa KDa</b>       |

**Description**

The protein encoded by this gene is actually a preproprotein that is cleaved into four distinct mature peptides. One of these, glucagon, is a pancreatic hormone that counteracts the glucose-lowering action of insulin by stimulating glycogenolysis and gluconeogenesis. Glucagon is a ligand for a specific G-protein linked receptor whose signalling pathway controls cell proliferation. Two of the other peptides are secreted from gut endocrine cells and promote nutrient absorption through distinct mechanisms. Finally, the fourth peptide is similar to glicentin, an active enteroglucagon. Tissue specificity: Glucagon is secreted in the A cells of the islets of Langerhans. GLP-1, GLP-2, oxyntomodulin and glicentin are secreted from enteroendocrine cells throughout the gastrointestinal tract. GLP1 and GLP2 are also secreted in selected neurons in the brain.

**Immunogen**

Purified recombinant fragment of human GCG expressed in E. Coli.

**Formulation**

Ascitic fluid containing 0.03% sodium azide.

**GCG Antibody - Additional Information**

**Gene ID** 2641

**Other Names**

Glucagon, Glicentin, Glicentin-related polypeptide, GRPP, Oxyntomodulin, OXM, OXY, Glucagon, Glucagon-like peptide 1, GLP-1, Incretin hormone, Glucagon-like peptide 1(7-37), GLP-1(7-37), Glucagon-like peptide 1(7-36), GLP-1(7-36), Glucagon-like peptide 2, GLP-2, GCG

**Dilution**

WB~~1/500 - 1/2000

**Storage**

Maintain refrigerated at 2-8°C for up to 6 months. For long term storage store at -20°C in small aliquots to prevent freeze-thaw cycles.

**Precautions**

GCG Antibody is for research use only and not for use in diagnostic or therapeutic procedures.

## GCG Antibody - Protein Information

**Name** GCG ([HGNC:4191](#))

### Function

[Glucagon]: Plays a key role in glucose metabolism and homeostasis. Regulates blood glucose by increasing gluconeogenesis and decreasing glycolysis. A counterregulatory hormone of insulin, raises plasma glucose levels in response to insulin-induced hypoglycemia. Plays an important role in initiating and maintaining hyperglycemic conditions in diabetes.

### Cellular Location

Secreted.

### Tissue Location

[Glucagon]: Secreted in the A cells of the islets of Langerhans. [Glucagon-like peptide 2]: Secreted from enteroendocrine cells throughout the gastrointestinal tract. Also secreted in selected neurons in the brain [Oxyntomodulin]: Secreted from enteroendocrine cells throughout the gastrointestinal tract

## GCG Antibody - Protocols

Provided below are standard protocols that you may find useful for product applications.

- [Western Blot](#)
- [Blocking Peptides](#)
- [Dot Blot](#)
- [Immunohistochemistry](#)
- [Immunofluorescence](#)
- [Immunoprecipitation](#)
- [Flow Cytometry](#)
- [Cell Culture](#)

## GCG Antibody - Images

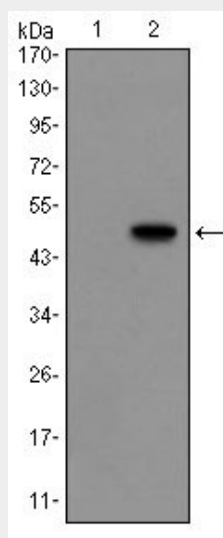


Figure 1: Western blot analysis using GCG mAb against HEK293 (1) and GCG(AA: 1-180)-hIgGFc

transfected HEK293 (2) cell lysate.

### **GCG Antibody - References**

1. Int J Mol Med. 2008 Jul;22(1):127-32.
2. Physiol Behav. 2008 Aug 6;94(5):696-9.