

**PAX8 Antibody**  
**Purified Mouse Monoclonal Antibody**  
**Catalog # AO1470a****Specification**

---

**PAX8 Antibody - Product Information**

|                   |                        |
|-------------------|------------------------|
| Application       | <b>WB</b>              |
| Primary Accession | <a href="#">Q71U36</a> |
| Reactivity        | <b>Human</b>           |
| Host              | <b>Mouse</b>           |
| Clonality         | <b>Monoclonal</b>      |
| Isotype           | <b>IgG1</b>            |
| Calculated MW     | <b>60kDa KDa</b>       |

**Description**

This gene encodes a member of the paired box (PAX) family of transcription factors. Members of this gene family typically encode proteins that contain a paired box domain, an octapeptide, and a paired-type homeodomain. This nuclear protein is involved in thyroid follicular cell development and expression of thyroid-specific genes. Mutations in this gene have been associated with thyroid dysgenesis, thyroid follicular carcinomas and atypical follicular thyroid adenomas. Tissue specificity: Expressed in the excretory system, thyroid gland and Wilms tumors. ABCAM: This protein is a member of the paired box (PAX) family of transcription factors, typically containing a paired box domain, an octapeptide, and a paired-type homeodomain. This family plays critical roles during fetal development and cancer growth. The specific function of the PAX8 is unknown but it may involve kidney cell differentiation, thyroid development, or thyroid dysgenesis. Alternative splicing in the gene by inclusion or exclusion of exons 7 and/or 8 has produced several known products but the biological significance of the variants is unknown. Several other splice variants have been proposed but the full nature of these products has not been described. Pax8 is also a marker of otic progenitor cells.

**Immunogen**

Purified recombinant fragment of human PAX8 expressed in E. Coli.

**Formulation**

Ascitic fluid containing 0.03% sodium azide.

**PAX8 Antibody - Additional Information**

**Gene ID** 7846

**Other Names**

Tubulin alpha-1A chain, Alpha-tubulin 3, Tubulin B-alpha-1, Tubulin alpha-3 chain, TUBA1A, TUBA3

**Dilution**

WB~~1/500 - 1/2000

**Storage**

Maintain refrigerated at 2-8°C for up to 6 months. For long term storage store at -20°C in small aliquots to prevent freeze-thaw cycles.

**Precautions**

PAX8 Antibody is for research use only and not for use in diagnostic or therapeutic procedures.

**PAX8 Antibody - Protein Information**

**Name** TUBA1A

**Synonyms** TUBA3

**Function**

Tubulin is the major constituent of microtubules, a cylinder consisting of laterally associated linear protofilaments composed of alpha- and beta-tubulin heterodimers. Microtubules grow by the addition of GTP-tubulin dimers to the microtubule end, where a stabilizing cap forms. Below the cap, tubulin dimers are in GDP-bound state, owing to GTPase activity of alpha-tubulin.

**Cellular Location**

Cytoplasm, cytoskeleton. Cytoplasm, cytoskeleton, flagellum axoneme  
{ECO:0000250|UniProtKB:P68369}

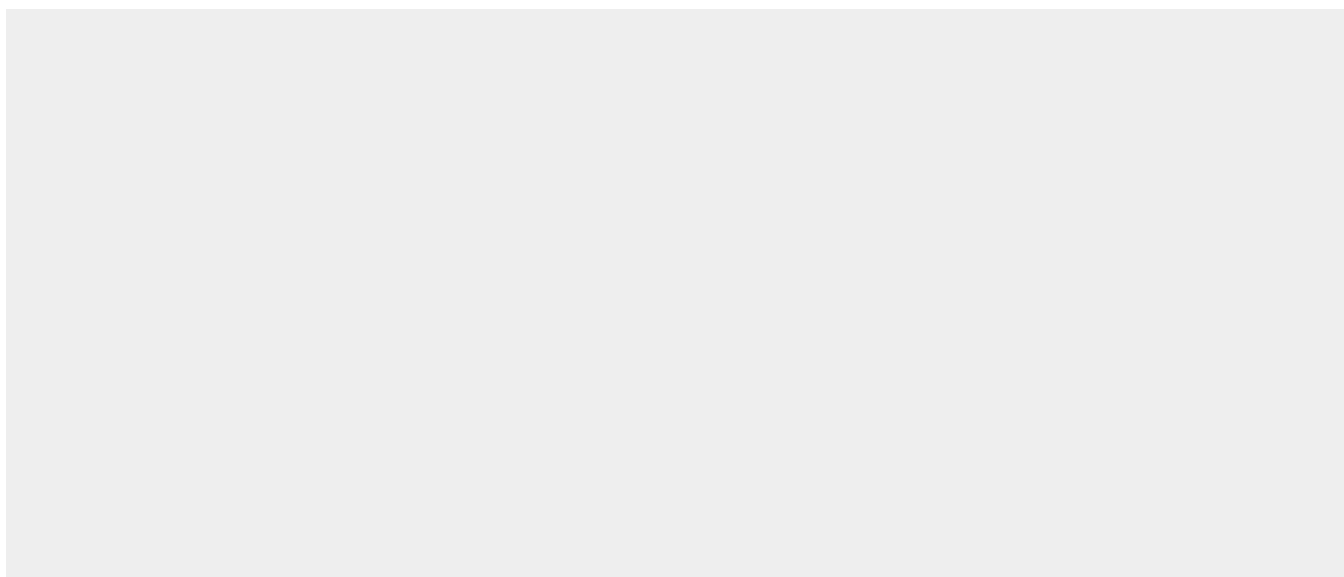
**Tissue Location**

Expressed at a high level in fetal brain.

**PAX8 Antibody - Protocols**

Provided below are standard protocols that you may find useful for product applications.

- [Western Blot](#)
- [Blocking Peptides](#)
- [Dot Blot](#)
- [Immunohistochemistry](#)
- [Immunofluorescence](#)
- [Immunoprecipitation](#)
- [Flow Cytometry](#)
- [Cell Culture](#)

**PAX8 Antibody - Images**

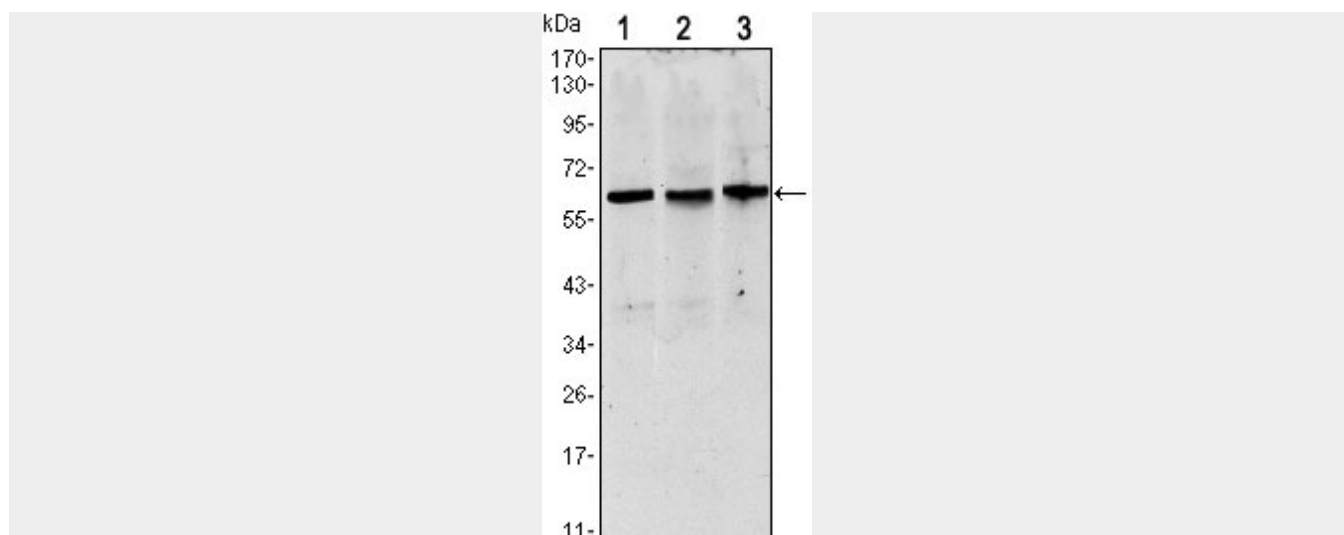


Figure 1: Western blot analysis using PAX8 mouse mAb against HeLa (1) HEK293 (2) and Raji (3) cell lysate.

#### **PAX8 Antibody - References**

1. Thyroid. 2009 Jan;19(1):61-8. 2. Cancer Genet Cytogenet. 2010 Jan 1;196(1):7-13. 3. Cancer Cytopathol. 2010 Oct 25;118(5):298-302.