

CCNB1 Antibody
Purified Mouse Monoclonal Antibody
Catalog # AO1468a**Specification**

CCNB1 Antibody - Product Information

Application	WB, IHC
Primary Accession	P14635
Reactivity	Human
Host	Mouse
Clonality	Monoclonal
Isotype	IgG1
Calculated MW	60kDa KDa

Description

The protein encoded by this gene is a regulatory protein involved in mitosis. The gene product complexes with p34(cdc2) to form the maturation-promoting factor (MPF). Two alternative transcripts have been found, a constitutively expressed transcript and a cell cycle-regulated transcript, that is expressed predominantly during G2/M phase. The different transcripts result from the use of alternate transcription initiation sites. (provided by RefSeq) It has higher expression in tumor tissues .

Immunogen

Purified recombinant fragment of human CCNB1 expressed in E. Coli.

Formulation

Ascitic fluid containing 0.03% sodium azide.

CCNB1 Antibody - Additional Information

Gene ID 891

Other Names

G2/mitotic-specific cyclin-B1, CCNB1, CCNB

Dilution

WB~~1/500 - 1/2000

IHC~~1/200 - 1/1000

Storage

Maintain refrigerated at 2-8°C for up to 6 months. For long term storage store at -20°C in small aliquots to prevent freeze-thaw cycles.

Precautions

CCNB1 Antibody is for research use only and not for use in diagnostic or therapeutic procedures.

CCNB1 Antibody - Protein Information

Name CCNB1

Synonyms CCNB

Function

Essential for the control of the cell cycle at the G2/M (mitosis) transition.

Cellular Location

Cytoplasm. Nucleus. Cytoplasm, cytoskeleton, microtubule organizing center, centrosome

CCNB1 Antibody - Protocols

Provided below are standard protocols that you may find useful for product applications.

- [Western Blot](#)
- [Blocking Peptides](#)
- [Dot Blot](#)
- [Immunohistochemistry](#)
- [Immunofluorescence](#)
- [Immunoprecipitation](#)
- [Flow Cytometry](#)
- [Cell Culture](#)

CCNB1 Antibody - Images

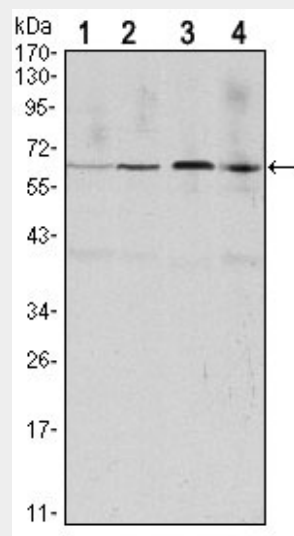


Figure 1: Western blot analysis using CCNB1 mouse mAb against HeLa (1), Jurkat (2), K562 (3) and PC-12 (4) cell lysate.

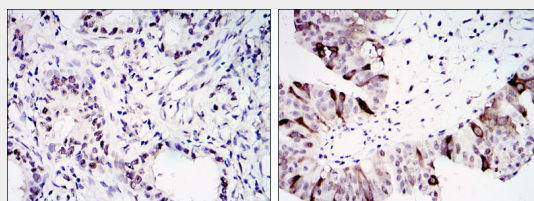


Figure 2: Immunohistochemical analysis of paraffin-embedded lung cancer (left) and ovary tumour tissues (right) using CCNB1 mouse mAb with DAB staining.

CCNB1 Antibody - References

1. Oncol Rep. 2009 Oct;22(4):745-55. 2. Cancer Biol Ther. 2009 Dec;8(24):2374-83. 3. Cytokine. 2010 Apr;50(1):42-9.