

**ERBB2 Antibody**  
**Purified Mouse Monoclonal Antibody**  
**Catalog # AO1464a****Specification**

---

**ERBB2 Antibody - Product Information**

Application	<b>WB, IHC, FC</b>
Primary Accession	<a href="#">P04626</a>
Reactivity	<b>Human</b>
Host	<b>Mouse</b>
Clonality	<b>Monoclonal</b>
Isotype	<b>IgG1</b>
Calculated MW	<b>180kDa KDa</b>

**Description**

ERBB2: v-erb-b2 erythroblastic leukemia viral oncogene homolog 2, neuro/glioblastoma derived oncogene homolog (avian). This gene encodes a member of the epidermal growth factor (EGF) receptor family of receptor tyrosine kinases. This protein has no ligand binding domain of its own and therefore cannot bind growth factors. However, it does bind tightly to other ligand-bound EGF receptor family members to form a heterodimer, stabilizing ligand binding and enhancing kinase-mediated activation of downstream signalling pathways, such as those involving mitogen-activated protein kinase and phosphatidylinositol-3 kinase. Allelic variations at amino acid positions 654 and 655 of isoform a (positions 624 and 625 of isoform b) have been reported, with the most common allele, Ile654/Ile655, shown here. Amplification and/or overexpression of this gene has been reported in numerous cancers, including breast and ovarian tumors. Alternative splicing results in several additional transcript variants, some encoding different isoforms and others that have not been fully characterized.

**Immunogen**

Purified recombinant fragment of human ERBB2(aa750-987) expressed in E. Coli.

**Formulation**

Ascitic fluid containing 0.03% sodium azide.

**ERBB2 Antibody - Additional Information**

**Gene ID** 2064

**Other Names**

Receptor tyrosine-protein kinase erbB-2, 2.7.10.1, Metastatic lymph node gene 19 protein, MLN 19, Proto-oncogene Neu, Proto-oncogene c-ErbB-2, Tyrosine kinase-type cell surface receptor HER2, p185erbB2, CD340, ERBB2, HER2, MLN19, NEU, NGL

**Dilution**

WB~~1/500 - 1/2000  
IHC~~1/200 - 1/1000  
FC~~1/200 - 1/400

**Storage**

Maintain refrigerated at 2-8°C for up to 6 months. For long term storage store at -20°C in small

aliquots to prevent freeze-thaw cycles.

### Precautions

ERBB2 Antibody is for research use only and not for use in diagnostic or therapeutic procedures.

## ERBB2 Antibody - Protein Information

**Name** ERBB2

**Synonyms** HER2, MLN19, NEU, NGL

### Function

Protein tyrosine kinase that is part of several cell surface receptor complexes, but that apparently needs a coreceptor for ligand binding. Essential component of a neuregulin-receptor complex, although neuregulins do not interact with it alone. GP30 is a potential ligand for this receptor. Regulates outgrowth and stabilization of peripheral microtubules (MTs). Upon ERBB2 activation, the MEMO1-RHOA-DIAPH1 signaling pathway elicits the phosphorylation and thus the inhibition of GSK3B at cell membrane. This prevents the phosphorylation of APC and CLASP2, allowing its association with the cell membrane. In turn, membrane-bound APC allows the localization of MACF1 to the cell membrane, which is required for microtubule capture and stabilization.

### Cellular Location

Cell membrane; Single-pass type I membrane protein. Cell projection, ruffle membrane; Single-pass type I membrane protein. Note=Internalized from the cell membrane in response to EGF stimulation. [Isoform 2]: Cytoplasm. Nucleus.

### Tissue Location

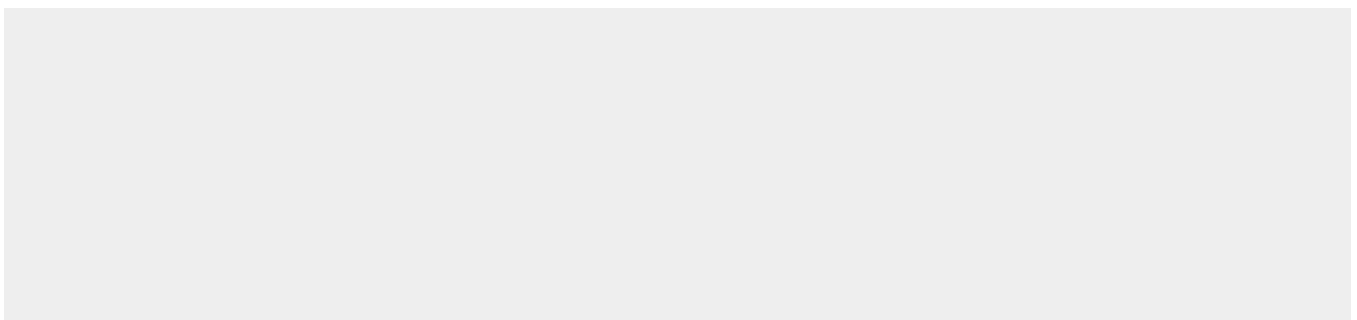
Expressed in a variety of tumor tissues including primary breast tumors and tumors from small bowel, esophagus, kidney and mouth.

## ERBB2 Antibody - Protocols

Provided below are standard protocols that you may find useful for product applications.

- [Western Blot](#)
- [Blocking Peptides](#)
- [Dot Blot](#)
- [Immunohistochemistry](#)
- [Immunofluorescence](#)
- [Immunoprecipitation](#)
- [Flow Cytometry](#)
- [Cell Culture](#)

## ERBB2 Antibody - Images



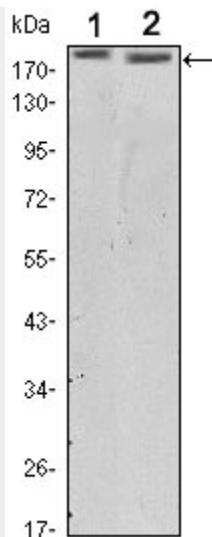


Figure 1: Western blot analysis using ERBB2 mouse mAb against SKBR3 (1) and MCF-7 (2) cell lysate.

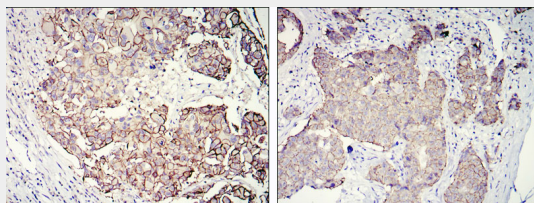


Figure 2: Immunohistochemical analysis of paraffin-embedded galactophore tumour using ERBB2 mouse mAb with DAB staining

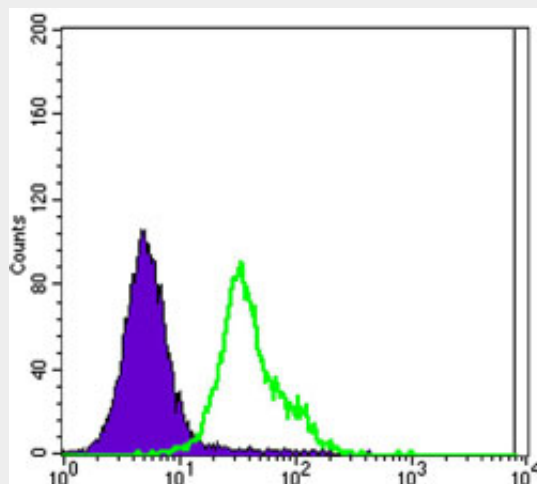


Figure 3: Flow cytometric analysis of MCF-7 cells using ERBB2 mouse mAb (green) and negative control (purple).

**ERBB2 Antibody - References**

1. RR Mehta, JH McDermott, TJ Hieken, et al. J. Clin. Oncol. 1998;16:2409 - 2416. 2. Hideko Y, Vered S, and Daniel F.H, et al. J. Clin. Oncol.2001;19:2334 - 2356. 3. Magali F, Kamel H, Cile B, et al. Clinical Cancer Research. 2000;6:4745-4754.