

**EPO Antibody**  
**Purified Mouse Monoclonal Antibody**  
**Catalog # AO1446a****Specification**

---

**EPO Antibody - Product Information**

Application	<b>WB, IF</b>
Primary Accession	<a href="#">P01588</a>
Reactivity	<b>Human</b>
Host	<b>Mouse</b>
Clonality	<b>Monoclonal</b>
Isotype	<b>IgG1</b>
Calculated MW	<b>21kDa KDa</b>

**Description**

Human erythropoietin is member of the EPO/TPO family and encodes a secreted, glycosylated cytokine hormone composed of four alpha helical bundles. The protein is found in the plasma and regulates red cell production by promoting erythroid differentiation and initiating hemoglobin synthesis. This protein also has neuroprotective activity against a variety of potential brain injuries and antiapoptotic functions in several tissue types. It is produced by kidney or liver of adult mammals and by liver of fetal or neonatal mammals. Tissue specificity: Produced by kidney or liver of adult mammals and by liver of fetal or neonatal mammals.

**Immunogen**

Purified recombinant fragment of human EPO expressed in E. Coli.

**Formulation**

Ascitic fluid containing 0.03% sodium azide.

**EPO Antibody - Additional Information**

**Gene ID** 2056

**Other Names**

Erythropoietin, Epoetin, EPO

**Dilution**

WB~~1/500 - 1/2000

IF~~1/200 - 1/1000

**Storage**

Maintain refrigerated at 2-8°C for up to 6 months. For long term storage store at -20°C in small aliquots to prevent freeze-thaw cycles.

**Precautions**

EPO Antibody is for research use only and not for use in diagnostic or therapeutic procedures.

**EPO Antibody - Protein Information**

**Name** EPO**Function**

Hormone involved in the regulation of erythrocyte proliferation and differentiation and the maintenance of a physiological level of circulating erythrocyte mass (PubMed:<a href="http://www.uniprot.org/citations/28283061" target="\_blank">28283061</a>). Binds to EPOR leading to EPOR dimerization and JAK2 activation thereby activating specific downstream effectors, including STAT1 and STAT3 (PubMed:<a href="http://www.uniprot.org/citations/9774108" target="\_blank">9774108</a>).

**Cellular Location**

Secreted.

**Tissue Location**

Produced by kidney or liver of adult mammals and by liver of fetal or neonatal mammals.

**EPO Antibody - Protocols**

Provided below are standard protocols that you may find useful for product applications.

- [Western Blot](#)
- [Blocking Peptides](#)
- [Dot Blot](#)
- [Immunohistochemistry](#)
- [Immunofluorescence](#)
- [Immunoprecipitation](#)
- [Flow Cytometry](#)
- [Cell Culture](#)

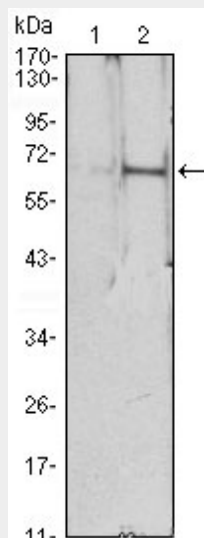
**EPO Antibody - Images**

Figure 1: Western blot analysis using EPO mAb against HEK293 (1) and EPO(AA: 28-193)-hIgGfC transfected HEK293 (2) cell lysate.

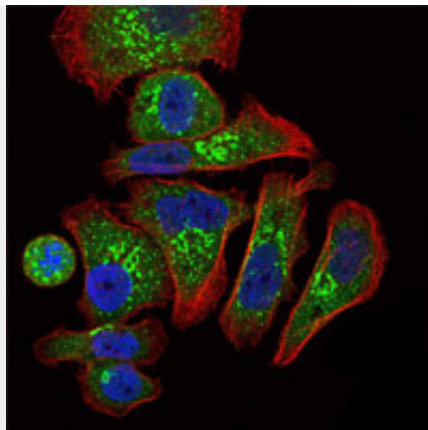


Figure 2: Immunofluorescence analysis of GC7901 cells using EPO mouse mAb (green). Blue: DRAQ5 fluorescent DNA dye. Red: Actin filaments have been labeled with Alexa Fluor-555 phalloidin.

#### **EPO Antibody - References**

1. J Negat Results Biomed. 2008 Nov 13;7:9. 2. J Biol Chem. 2009 Feb 13;284(7):4567-81.