

THAP11 Antibody
Purified Mouse Monoclonal Antibody
Catalog # AO1436a

Specification

THAP11 Antibody - Product Information

Application	WB, IHC, IF, FC
Primary Accession	O96EK4
Reactivity	Human
Host	Mouse
Clonality	Monoclonal
Isotype	IgG1
Calculated MW	44kDa KDa

Description

The protein encoded by this gene contains a THAP domain, which is a conserved DNA-binding domain that has striking similarity to the site-specific DNA-binding domain (DBD) of Drosophila P element transposases.

Immunogen

Purified recombinant fragment of human THAP11 expressed in E. Coli.

Formulation

Ascitic fluid containing 0.03% sodium azide.

THAP11 Antibody - Additional Information

Gene ID 57215

Other Names

THAP domain-containing protein 11, THAP11

Dilution

WB~~1/500 - 1/2000
IHC~~1/200 - 1/1000
IF~~1/200 - 1/1000
FC~~1/200 - 1/400

Storage

Maintain refrigerated at 2-8°C for up to 6 months. For long term storage store at -20°C in small aliquots to prevent freeze-thaw cycles.

Precautions

THAP11 Antibody is for research use only and not for use in diagnostic or therapeutic procedures.

THAP11 Antibody - Protein Information

Name THAP11

Function

Transcriptional repressor that plays a central role for embryogenesis and the pluripotency of embryonic stem (ES) cells. Sequence-specific DNA-binding factor that represses gene expression in pluripotent ES cells by directly binding to key genetic loci and recruiting epigenetic modifiers (By similarity).

Cellular Location

Nucleus. Cytoplasm. Note=May be regulated by shuttling of the protein between the cytoplasm and nucleus.

THAP11 Antibody - Protocols

Provided below are standard protocols that you may find useful for product applications.

- [Western Blot](#)
- [Blocking Peptides](#)
- [Dot Blot](#)
- [Immunohistochemistry](#)
- [Immunofluorescence](#)
- [Immunoprecipitation](#)
- [Flow Cytometry](#)
- [Cell Culture](#)

THAP11 Antibody - Images

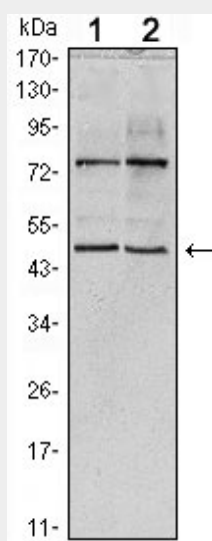


Figure 1: Western blot analysis using THAP11 mouse mAb against HeLa (1) and NTERA-2 (2) cell lysate.

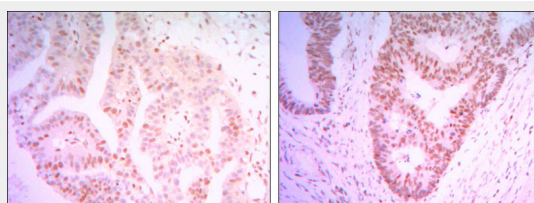


Figure 2: Immunohistochemical analysis of paraffin-embedded colon cancer tissues (left) and ovary cancer tissues (right) using THAP11 mouse mAb with DAB staining.

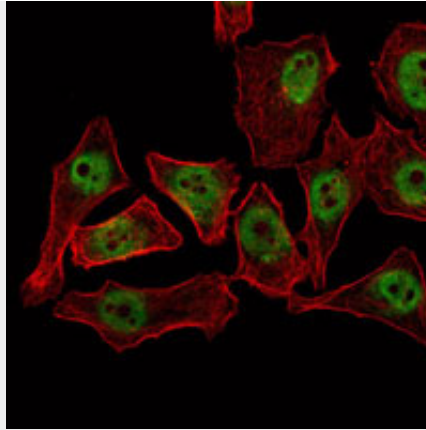


Figure 3: Immunofluorescence analysis of NTERA-2 cells using THAP11 mouse mAb (green). Red: Actin filaments have been labeled with Alexa Fluor-555 phalloidin.

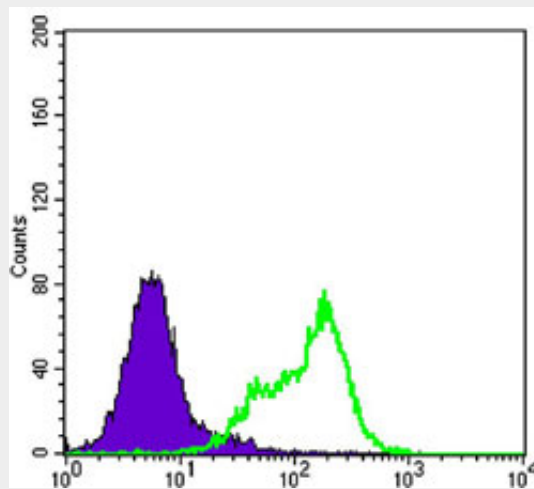


Figure 4: Flow cytometric analysis of Hela cells using THAP11 mouse mAb (green) and negative control (purple).

THAP11 Antibody - References

1. Genomics. 1993 Jun;16(3):572-9.
2. Cell. 2008 Jun 27;133(7):1162-74.
3. Cell Death Differ. 2009 Mar;16(3):395-405.