

**STAT6 Antibody**  
**Purified Mouse Monoclonal Antibody**  
**Catalog # AO1421a****Specification**

---

**STAT6 Antibody - Product Information**

Application	<b>WB, IF</b>
Primary Accession	<a href="#">P42226</a>
Reactivity	<b>Human, Mouse, Rat, Monkey</b>
Host	<b>Mouse</b>
Clonality	<b>Monoclonal</b>
Isotype	<b>IgG1</b>
Calculated MW	<b>94kDa KDa</b>

**Description**

STAT6 protein is a transcription factor activated by cytokines, particularly interleukin 4 and IL 13. (STAT6<sup>-/-</sup>) were found to be deficient in IL 4 mediated functions including Th2 helper T cell differentiation, expression of cell surface markers, T cell proliferation, immunoglobulin class switching to IgE, and partial loss of IL 4 mediated proliferation. STAT6 mRNA has been detected in peripheral blood lymphocytes, colon, intestine, ovary, prostate, thymus, spleen, kidney, liver, lung and placenta. STAT6 is critically involved in Th2 immune response.

**Immunogen**

Purified recombinant fragment of human STAT6 expressed in E. Coli.

**Formulation**

Ascitic fluid containing 0.03% sodium azide. <br />

**STAT6 Antibody - Additional Information**

**Gene ID** 6778

**Other Names**

Signal transducer and activator of transcription 6, IL-4 Stat, STAT6

**Dilution**

WB~~1/500 - 1/2000

IF~~1/200 - 1/1000

**Storage**

Maintain refrigerated at 2-8°C for up to 6 months. For long term storage store at -20°C in small aliquots to prevent freeze-thaw cycles.

**Precautions**

STAT6 Antibody is for research use only and not for use in diagnostic or therapeutic procedures.

**STAT6 Antibody - Protein Information**

## Name STAT6

### Function

Carries out a dual function: signal transduction and activation of transcription. Involved in IL4/interleukin-4- and IL3/interleukin-3-mediated signaling.

### Cellular Location

Cytoplasm. Nucleus. Note=Translocated into the nucleus in response to phosphorylation

## STAT6 Antibody - Protocols

Provided below are standard protocols that you may find useful for product applications.

- [Western Blot](#)
- [Blocking Peptides](#)
- [Dot Blot](#)
- [Immunohistochemistry](#)
- [Immunofluorescence](#)
- [Immunoprecipitation](#)
- [Flow Cytometry](#)
- [Cell Culture](#)

## STAT6 Antibody - Images

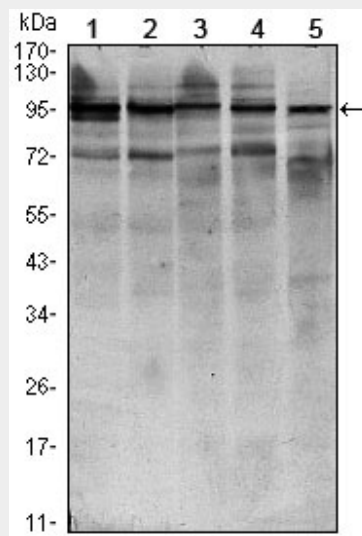


Figure 1: Western blot analysis using STAT6 mouse mAb against HEK293 (1), NIH/3T3 (2), MCF-7 (3), Raw246.7 (4) and PC-12 (5) cell lysate.

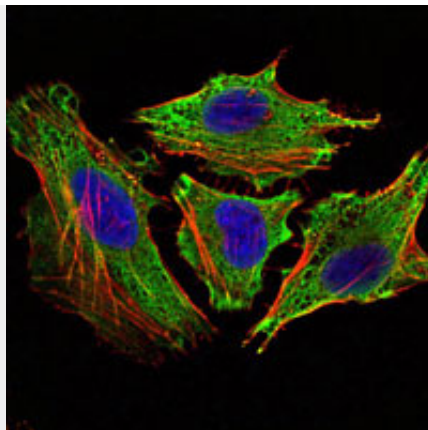


Figure 2: Immunofluorescence analysis of HeLa cells using STAT6 mouse mAb (green). Blue: DRAQ5 fluorescent DNA dye. Red: Actin filaments have been labeled with Alexa Fluor-555 phalloidin

### **STAT6 Antibody - References**

1. *Pediatr Nephrol.* 2009 Mar;24(3):489-95.
2. *Mol Immunol.* 2009 Jun;46(10):2080-9.
3. *Am J Hum Genet.* 2009 Nov;85(5):628-42.