

**ICAM1 Antibody**  
**Purified Mouse Monoclonal Antibody**  
**Catalog # AO1383a****Specification**

---

**ICAM1 Antibody - Product Information**

Application	<b>WB, IHC</b>
Primary Accession	<a href="#">P05362</a>
Reactivity	<b>Human</b>
Host	<b>Mouse</b>
Clonality	<b>Monoclonal</b>
Isotype	<b>IgG1</b>
Calculated MW	<b>57.8kDa KDa</b>

**Description**

ICAM1 is a 85-110 kDa single chain type 1 integral membrane glycoprotein with an extracellular domain of five immunoglobulin superfamily repeats, a transmembrane region and a cytoplasmic domain. It shares considerable amino acid sequence homology with ICAM3 and with ICAM2. ICAM1 is expressed by activated endothelial cells. It is detected on cells of many other lineages (e.g. epithelial cells, fibroblasts, chondrocytes, B lymphocytes, T lymphocytes (low), monocytes, macrophages, dendritic cells and neutrophils), with lower levels that increase in inflammation. ICAM1 is also detected in some carcinoma and melanoma cells. Soluble ICAM1 is detectable in the plasma and is elevated in patients with various inflammatory syndromes. It is the receptor for rhinoviruses and malaria.

**Immunogen**

Purified recombinant fragment of human ICAM1(28-480aa) expressed in E. Coli. <br />

**Formulation**

Ascitic fluid containing 0.03% sodium azide. <br />

**ICAM1 Antibody - Additional Information**

**Gene ID** 3383

**Other Names**

Intercellular adhesion molecule 1, ICAM-1, Major group rhinovirus receptor, CD54, ICAM1

**Dilution**

WB~~1/500 - 1/2000

IHC~~1:200~~1000

**Storage**

Maintain refrigerated at 2-8°C for up to 6 months. For long term storage store at -20°C in small aliquots to prevent freeze-thaw cycles.

**Precautions**

ICAM1 Antibody is for research use only and not for use in diagnostic or therapeutic procedures.

## ICAM1 Antibody - Protein Information

**Name** ICAM1

### Function

ICAM proteins are ligands for the leukocyte adhesion protein LFA-1 (integrin alpha-L/beta-2). During leukocyte trans-endothelial migration, ICAM1 engagement promotes the assembly of endothelial apical cups through ARHGEF26/SGEF and RHOG activation.

### Cellular Location

Membrane; Single-pass type I membrane protein.

## ICAM1 Antibody - Protocols

Provided below are standard protocols that you may find useful for product applications.

- [Western Blot](#)
- [Blocking Peptides](#)
- [Dot Blot](#)
- [Immunohistochemistry](#)
- [Immunofluorescence](#)
- [Immunoprecipitation](#)
- [Flow Cytometry](#)
- [Cell Culture](#)

## ICAM1 Antibody - Images

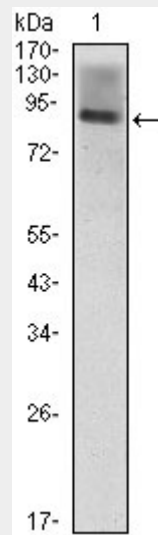


Figure 1: Western blot analysis using ICAM1 mouse mAb against ICAM1(AA: 28-480)-hIgGfc transfected HEK293 (1) cell lysate.

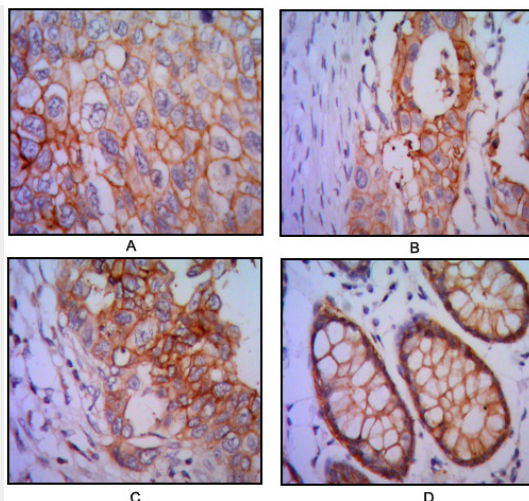


Figure 2: Immunohistochemical analysis of paraffin-embedded human lung cancer (A), colon cancer (B), breast cancer (C) and rectal cancer (D), using EPCAM mouse mAb with DAB staining.

#### **ICAM1 Antibody - References**

1. J Neurosci Res. 1992 Feb;31(2):365-74. 2. J Cell Biol. 2002 Jun 24;157(7):1233-45. 3. J Hepatol. 2004 Mar;40(3):375-9.