

**ETS1 Antibody**  
**Purified Mouse Monoclonal Antibody**  
**Catalog # AO1371a**

**Specification**

---

**ETS1 Antibody - Product Information**

Application	WB, IHC, IF, FC
Primary Accession	<a href="#">P14921</a>
Reactivity	Human
Host	Mouse
Clonality	Monoclonal
Isotype	IgG1
Calculated MW	50.4kDa KDa

**Description**

The ETS1 is a transcription factor known to regulate expression of a number of genes involved in extracellular matrix remodeling. ETS1 is absent from normal gastric epithelium but is expressed in approximately 60% of gastric carcinomas and oral squamous cell carcinomas with a significant correlation to the tumor stage.

**Immunogen**

Purified recombinant fragment of human ETS1 expressed in E. Coli. <br />

**Formulation**

Ascitic fluid containing 0.03% sodium azide. <br />

**ETS1 Antibody - Additional Information**

**Gene ID** 2113

**Other Names**

Protein C-ets-1, p54, ETS1, EWSR2

**Dilution**

WB~~1/500 - 1/2000

IHC~~1/200 - 1/1000

IF~~1/200 - 1/1000

FC~~1/200 - 1/400

**Storage**

Maintain refrigerated at 2-8°C for up to 6 months. For long term storage store at -20°C in small aliquots to prevent freeze-thaw cycles.

**Precautions**

ETS1 Antibody is for research use only and not for use in diagnostic or therapeutic procedures.

**ETS1 Antibody - Protein Information**

**Name** ETS1**Synonyms** EWSR2**Function**

Transcription factor (PubMed:[10698492](http://www.uniprot.org/citations/10698492), PubMed:[11909962](http://www.uniprot.org/citations/11909962)). Directly controls the expression of cytokine and chemokine genes in a wide variety of different cellular contexts (PubMed:[20378371](http://www.uniprot.org/citations/20378371)). May control the differentiation, survival and proliferation of lymphoid cells (PubMed:[20378371](http://www.uniprot.org/citations/20378371)). May also regulate angiogenesis through regulation of expression of genes controlling endothelial cell migration and invasion (PubMed:[15247905](http://www.uniprot.org/citations/15247905), PubMed:[15592518](http://www.uniprot.org/citations/15592518)).

**Cellular Location**

Nucleus. Cytoplasm Note=Delocalizes from nucleus to cytoplasm when coexpressed with isoform Ets-1 p27.

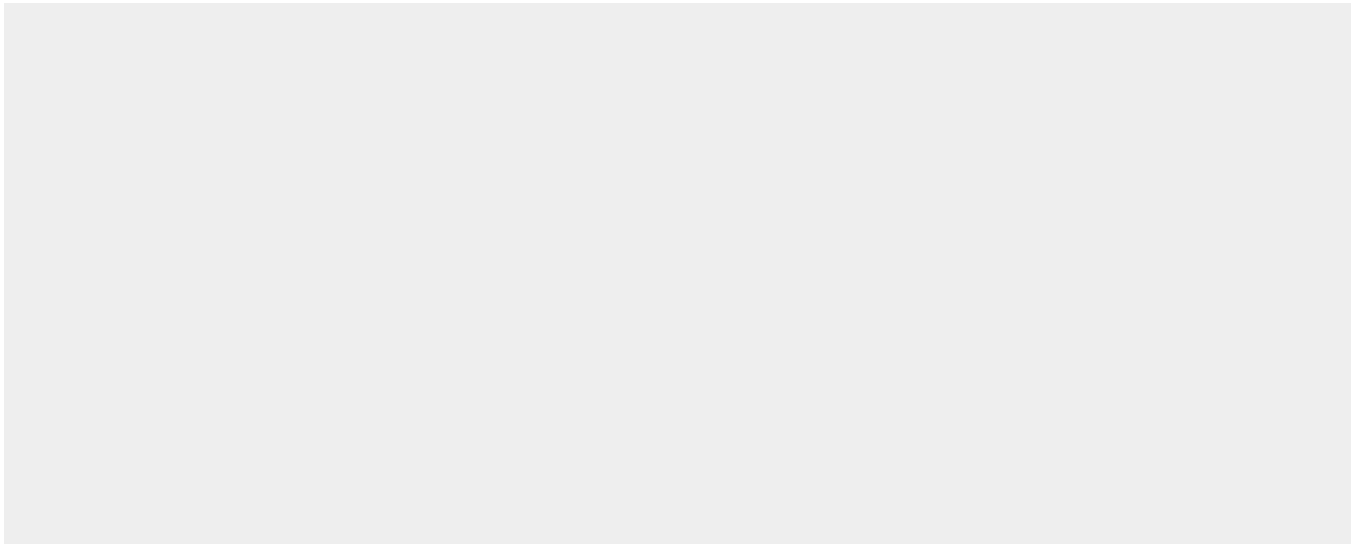
**Tissue Location**

Highly expressed within lymphoid cells. Isoforms c- ETS-1A and Ets-1 p27 are both detected in all fetal tissues tested, but vary with tissue type in adult tissues. None is detected in brain or kidney.

**ETS1 Antibody - Protocols**

Provided below are standard protocols that you may find useful for product applications.

- [Western Blot](#)
- [Blocking Peptides](#)
- [Dot Blot](#)
- [Immunohistochemistry](#)
- [Immunofluorescence](#)
- [Immunoprecipitation](#)
- [Flow Cytometry](#)
- [Cell Culture](#)

**ETS1 Antibody - Images**

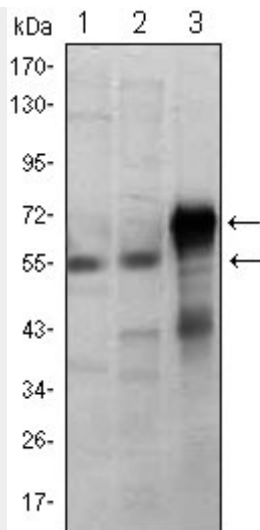


Figure 1: Western blot analysis using ETS1 mouse mAb against Jurkat (1), HepG2 (2) and ETS1-hlgGfc transfected HEK293 (3) cell lysate.

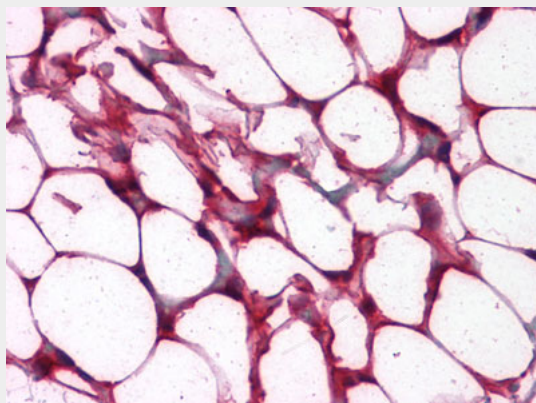


Figure 2: Immunohistochemical analysis of paraffin-embedded human Colon, Adipocytes tissues using anti-ETS1 mouse mAb

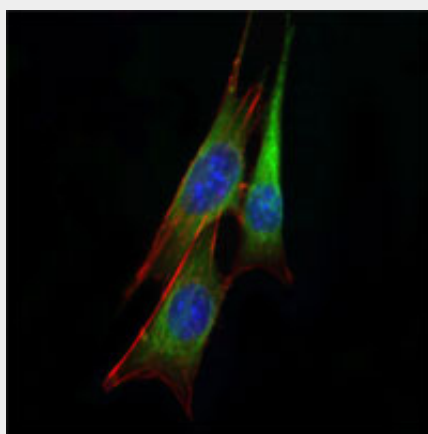


Figure 3: Immunofluorescence analysis of NIH/3T3 cells using anti-ETS1 mAb (green). Blue: DRAQ5 fluorescent DNA dye.

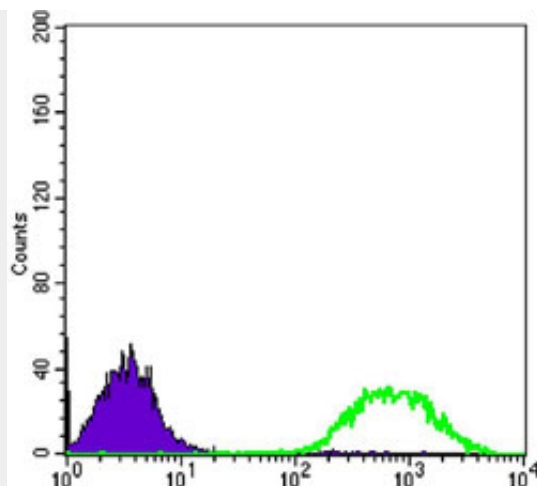


Figure 4: Flow cytometric analysis of Jurkat cells using anti-ETS1 mAb (green) and negative control (purple).

#### ETS1 Antibody - References

1. DNA Cell Biol. 2005 Feb;24(2):126-32.
2. Mol Hum Reprod. 2006 Feb;12(2):71-6.
3. J Biol Chem. 2008 Jan 11;283(2):951-62.