

EGF Antibody
Purified Mouse Monoclonal Antibody
Catalog # AO1368a**Specification**

EGF Antibody - Product Information

Application	WB, IF, IHC
Primary Accession	P01133
Reactivity	Human
Host	Mouse
Clonality	Monoclonal
Isotype	IgG1
Calculated MW	134kDa KDa

Description

Epidermal growth factor has a profound effect on the differentiation of specific cells in vivo and is a potent mitogenic factor for a variety of cultured cells of both ectodermal and mesodermal origin. The EGF precursor is believed to exist as a membrane-bound molecule which is proteolytically cleaved to generate the 53-amino acid peptide hormone that stimulates cells to divide.

Immunogen

Purified recombinant fragment of human EGF expressed in E. Coli.

Formulation

Ascitic fluid containing 0.03% sodium azide.

EGF Antibody - Additional Information

Gene ID 1950

Other Names

Pro-epidermal growth factor, EGF, Epidermal growth factor, Urogastrone, EGF

Dilution

WB~~1/500 - 1/2000

IF~~1/200 - 1/1000

IHC~~1:200~~1000

Storage

Maintain refrigerated at 2-8°C for up to 6 months. For long term storage store at -20°C in small aliquots to prevent freeze-thaw cycles.

Precautions

EGF Antibody is for research use only and not for use in diagnostic or therapeutic procedures.

EGF Antibody - Protein Information

Name EGF

Function

EGF stimulates the growth of various epidermal and epithelial tissues in vivo and in vitro and of some fibroblasts in cell culture. Magnesiotropic hormone that stimulates magnesium reabsorption in the renal distal convoluted tubule via engagement of EGFR and activation of the magnesium channel TRPM6. Can induce neurite outgrowth in motoneurons of the pond snail *Lymnaea stagnalis* in vitro (PubMed:10964941).

Cellular Location

Membrane; Single-pass type I membrane protein.

Tissue Location

Expressed in kidney, salivary gland, cerebrum and prostate.

EGF Antibody - Protocols

Provided below are standard protocols that you may find useful for product applications.

- [Western Blot](#)
- [Blocking Peptides](#)
- [Dot Blot](#)
- [Immunohistochemistry](#)
- [Immunofluorescence](#)
- [Immunoprecipitation](#)
- [Flow Cytometry](#)
- [Cell Culture](#)

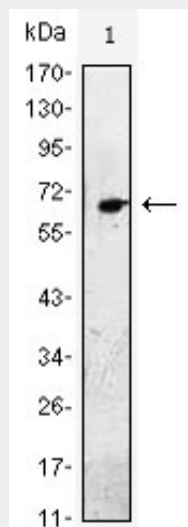
EGF Antibody - Images

Figure 1: Western blot analysis using EGF mAb against EGF(AA: 971-1023)-hIgGfc transfected HEK293 cell lysate.

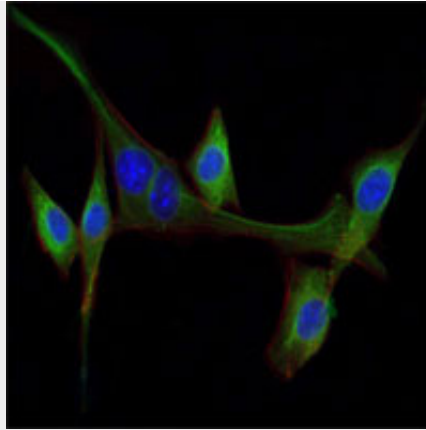


Figure 2: Immunofluorescence analysis of NIH/3T3 cells using EGF mouse mAb (green). Blue: DRAQ5 fluorescent DNA dye. Red: Actin filaments have been labeled with Alexa Fluor-555 phalloidin.

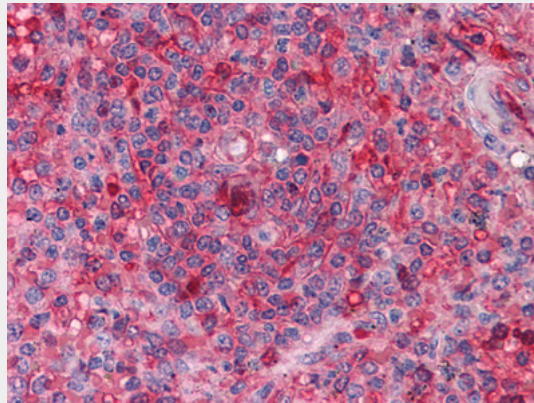


Figure 2: Immunohistochemical analysis of paraffin-embedded human Spleen tissues using anti-ARNTL mouse mAb

EGF Antibody - References

1. Biochem J. 1992 Dec 1;288 (Pt 2):395-405.
2. Oncogene. 2000 Mar 16;19(12):1509-18.
3. Nature. 2002 Mar 14;416(6877):183-7.
4. Radiat Res. 2003 Apr;159(4):439-52.