

ETS1 Antibody
Mouse Monoclonal Antibody to ETS1
Catalog # AO1354b**Specification**

ETS1 Antibody - Product Information

Application	WB, IHC
Primary Accession	P14921
Reactivity	Human
Host	Mouse
Clonality	Monoclonal
Isotype	Mouse IgG1
Calculated MW	50408

Description

The ETS1 is a transcription factor known to regulate expression of a number of genes involved in extracellular matrix remodeling. ETS1 is absent from normal gastric epithelium but is expressed in approximately 60% of gastric carcinomas and oral squamous cell carcinomas with a significant correlation to the tumor stage.

Immunogen

Purified recombinant fragment of human ETS1 expressed in E. Coli.

ETS1 Antibody - Additional Information

Gene ID 2113

Other Names

Protein C-ets-1, p54, ETS1, EWSR2

Target/Specificity

Purified recombinant fragment of human ETS1 expressed in E. Coli.

Dilution

WB~~1:500~~2000

IHC~~1:200~~1000

Format

Ascitic fluid containing 0.03% sodium azide.

Storage

Maintain refrigerated at 2-8°C for up to 6 months. For long term storage store at -20°C in small aliquots to prevent freeze-thaw cycles.

Precautions

ETS1 Antibody is for research use only and not for use in diagnostic or therapeutic procedures.

ETS1 Antibody - Protein Information

Name ETS1**Synonyms** EWSR2**Function**

Transcription factor (PubMed:10698492, PubMed:11909962). Directly controls the expression of cytokine and chemokine genes in a wide variety of different cellular contexts (PubMed:20378371). May control the differentiation, survival and proliferation of lymphoid cells (PubMed:20378371). May also regulate angiogenesis through regulation of expression of genes controlling endothelial cell migration and invasion (PubMed:15247905, PubMed:15592518).

Cellular Location

Nucleus. Cytoplasm Note=Delocalizes from nucleus to cytoplasm when coexpressed with isoform Ets-1 p27.

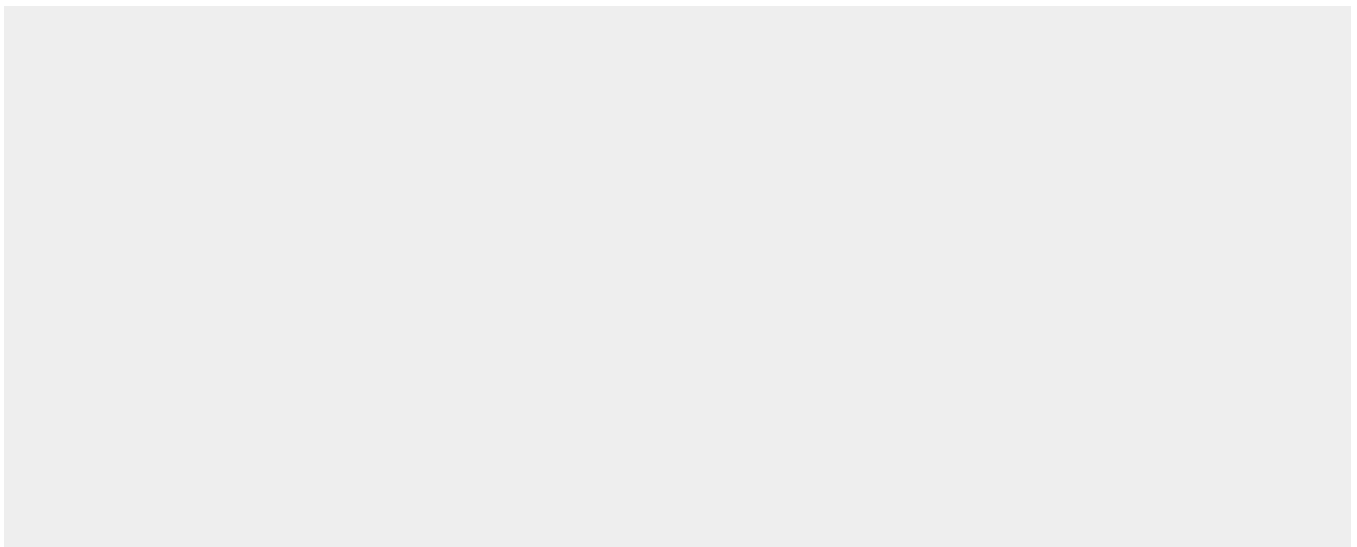
Tissue Location

Highly expressed within lymphoid cells. Isoforms c- ETS-1A and Ets-1 p27 are both detected in all fetal tissues tested, but vary with tissue type in adult tissues. None is detected in brain or kidney.

ETS1 Antibody - Protocols

Provided below are standard protocols that you may find useful for product applications.

- [Western Blot](#)
- [Blocking Peptides](#)
- [Dot Blot](#)
- [Immunohistochemistry](#)
- [Immunofluorescence](#)
- [Immunoprecipitation](#)
- [Flow Cytometry](#)
- [Cell Culture](#)

ETS1 Antibody - Images

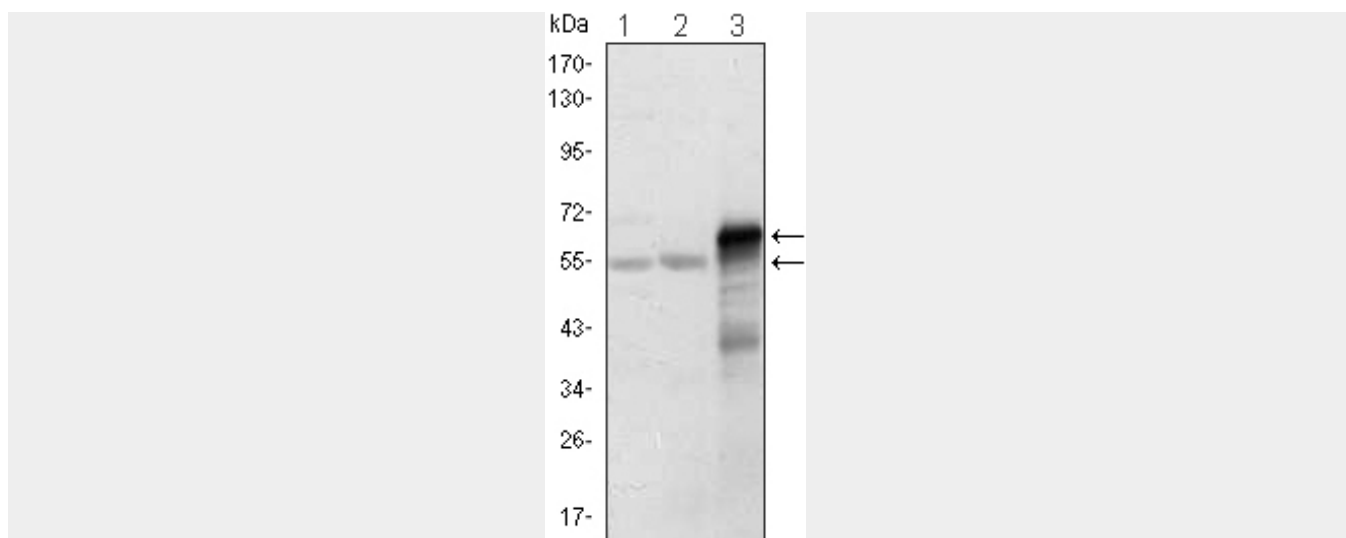


Figure 1: Western blot analysis using ETS1 mouse mAb against Jurkat (1), HepG2 (2) and ETS1-hlgFc transfected HEK293 (3) cell lysate.

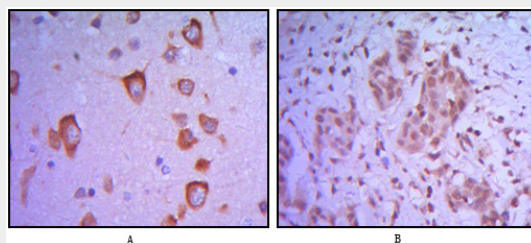


Figure 2: Immunohistochemical analysis of paraffin-embedded human brain tissue (A) and breast tumor (B) using ETS1 mouse mAb.

ETS1 Antibody - References

1. DNA Cell Biol. 2005 Feb;24(2):126-32.
2. Mol Hum Reprod. 2006 Feb;12(2):71-6.
3. J Biol Chem. 2008 Jan 11;283(2):951-62.