

**KRT15 Antibody**  
**Purified Mouse Monoclonal Antibody**  
**Catalog # AO1335a****Specification**

---

**KRT15 Antibody - Product Information**

Application	<b>WB, IHC, IF, FC</b>
Primary Accession	<a href="#">P19012</a>
Reactivity	<b>Human</b>
Host	<b>Mouse</b>
Clonality	<b>Monoclonal</b>
Isotype	<b>IgG2a</b>
Calculated MW	<b>49kDa KDa</b>

**Description**

The protein encoded by this gene is a member of the keratin gene family. The keratins are intermediate filament proteins responsible for the structural integrity of epithelial cells and are subdivided into cytokeratins and hair keratins. Keratin 15 is a type I keratin without a defined type II partner. Keratin 15 is expressed primarily in the basal keratinocytes of stratified tissues, including the fetal epidermis and fetal nail. Expression of keratin 15 is downregulated in some hyperproliferating situations, such as psoriasis and hypertrophic scars. Because keratinocytes in psoriasis and hypertrophic scars are activated, it is suggested that keratin 15 expression is not compatible with keratinocyte activation and the keratin 15 gene is downregulated to maintain the activated phenotype.

**Immunogen**

Purified recombinant fragment of KRT15 expressed in E. Coli.

**Formulation**

Ascitic fluid containing 0.03% sodium azide.

**KRT15 Antibody - Additional Information**

**Gene ID** 3866

**Other Names**

Keratin, type I cytoskeletal 15, Cytokeratin-15, CK-15, Keratin-15, K15, KRT15, KRTB

**Dilution**

WB~~1/500 - 1/2000

IHC~~1/200 - 1/1000

IF~~1/200 - 1/1000

FC~~1/200 - 1/400

**Storage**

Maintain refrigerated at 2-8°C for up to 6 months. For long term storage store at -20°C in small aliquots to prevent freeze-thaw cycles.

**Precautions**

KRT15 Antibody is for research use only and not for use in diagnostic or therapeutic procedures.

## KRT15 Antibody - Protein Information

**Name** KRT15

**Synonyms** KRTB

### Tissue Location

Expressed in a discontinuous manner in the basal cell layer of adult skin epidermis, but continuously in the basal layer of fetal skin epidermis and nail. Also expressed in the outer root sheath above the hair bulb in hair follicle (at protein level) Expressed homogeneously in all cell layers of the esophagus and exocervix, but detected in the basal cell layer only of oral mucosa, skin and in the basal plus the next two layers of the suprabasal epithelium of the palate.

## KRT15 Antibody - Protocols

Provided below are standard protocols that you may find useful for product applications.

- [Western Blot](#)
- [Blocking Peptides](#)
- [Dot Blot](#)
- [Immunohistochemistry](#)
- [Immunofluorescence](#)
- [Immunoprecipitation](#)
- [Flow Cytometry](#)
- [Cell Culture](#)

## KRT15 Antibody - Images

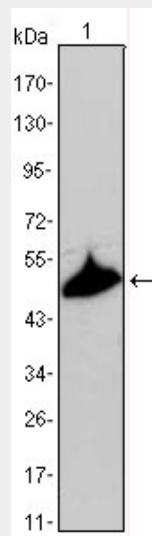


Figure 1: Western blot analysis using KRT15 mouse mAb against A431 cell lysate.

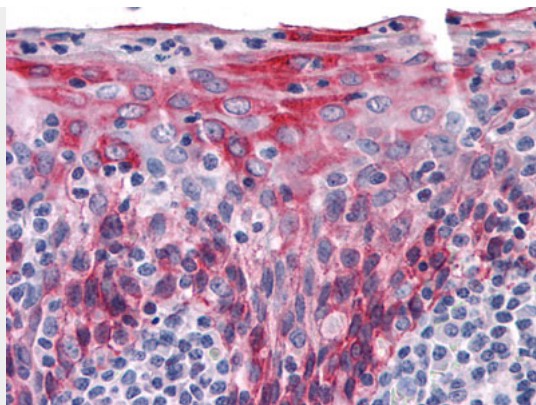


Figure 2: Immunohistochemical analysis of paraffin-embedded human Tonsil tissues using KRT15 mouse mAb

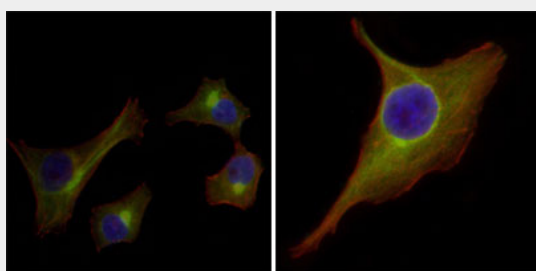


Figure 3: Immunofluorescence analysis of HepG2(left) and PACN-1 (right) cells using KRT15 mouse mAb (green). Red: Actin filaments have been labeled with DY-554 phalloidin. Blue: DRAQ5 fluorescent DNA dye.

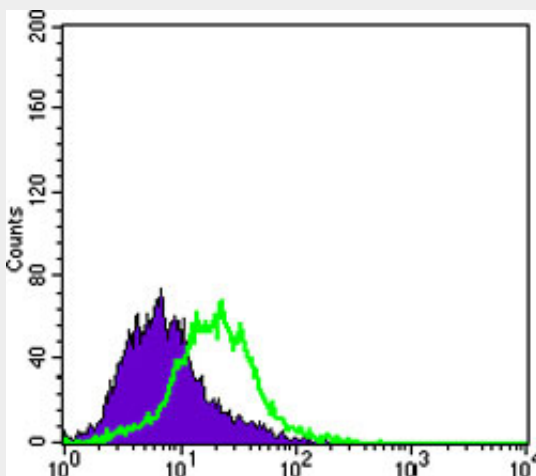


Figure 4: Flow cytometric analysis of PACN-1 cells using KRT15 mouse mAb (green) and negative control (purple).

#### **KRT15 Antibody - References**

1. J Invest Dermatol. 1999. 112(3):362-9
2. Exp Cell Res. 2006. 254(1):80-90
3. Mol Cell Biol. 2000. 24(8):3168-79