

**AFP Antibody**  
**Purified Mouse Monoclonal Antibody**  
**Catalog # AO1330a****Specification**

---

**AFP Antibody - Product Information**

Application	<b>WB</b>
Primary Accession	<a href="#">P02771</a>
Reactivity	<b>Human</b>
Host	<b>Mouse</b>
Clonality	<b>Monoclonal</b>
Isotype	<b>IgG2b</b>
Calculated MW	<b>69kDa KDa</b>

**Description**

AFP (alpha-fetoprotein), a major plasma protein produced by the yolk sac and the liver during fetal life. Alpha-fetoprotein expression in adults is often associated with hepatoma or teratoma. However, hereditary persistence of alpha-fetoprotein may also be found in individuals with no obvious pathology. The protein is thought to be the fetal counterpart of serum albumin, and the alpha-fetoprotein and albumin genes are present in tandem in the same transcriptional orientation on chromosome 4. Alpha-fetoprotein is found in monomeric as well as dimeric and trimeric forms, and binds copper, nickel, fatty acids and bilirubin. The level of alpha-fetoprotein in amniotic fluid is used to measure renal loss of protein to screen for spina bifida and anencephaly.

**Immunogen**

Purified recombinant fragment of human AFP expressed in E. Coli.

**Formulation**

Antibody are purified by protein G affinity chromatography. <br />Liquid in PBS containing 50% glycerol and 0.03% sodium azide. <br />

**AFP Antibody - Additional Information**

**Gene ID** 174

**Other Names**

Alpha-fetoprotein, Alpha-1-fetoprotein, Alpha-fetoglobulin, AFP, HPAFP

**Dilution**

WB~~1/500 - 1/2000

**Storage**

Maintain refrigerated at 2-8°C for up to 6 months. For long term storage store at -20°C in small aliquots to prevent freeze-thaw cycles.

**Precautions**

AFP Antibody is for research use only and not for use in diagnostic or therapeutic procedures.

**AFP Antibody - Protein Information**

**Name** AFP

**Synonyms** HPAFP

**Function**

Binds copper, nickel, and fatty acids as well as, and bilirubin less well than, serum albumin. Only a small percentage (less than 2%) of the human AFP shows estrogen-binding properties.

**Cellular Location**

Secreted.

**Tissue Location**

Plasma. Synthesized by the fetal liver and yolk sac

**AFP Antibody - Protocols**

Provided below are standard protocols that you may find useful for product applications.

- [Western Blot](#)
- [Blocking Peptides](#)
- [Dot Blot](#)
- [Immunohistochemistry](#)
- [Immunofluorescence](#)
- [Immunoprecipitation](#)
- [Flow Cytometry](#)
- [Cell Culture](#)

**AFP Antibody - Images**

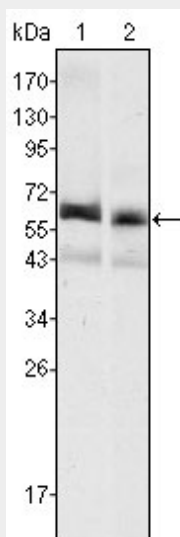


Figure 1: Western blot analysis using AFP mouse mAb against HepG2 (1) and SMMC-7721 (2) cell lysate.

**AFP Antibody - References**

1. Proc Natl Acad Sci U S A. 1985 Nov;82(21):7160-4.
2. Pediatr Hematol Oncol. 2001 Dec;18(8):509-18.
3. Tumour Biol. 2002 Jul-Aug;23(4):202-11.