

BRAF Antibody
Purified Mouse Monoclonal Antibody
Catalog # AO1264a**Specification**

BRAF Antibody - Product Information

Application	WB, IHC, IF
Primary Accession	P15056
Reactivity	Human, Mouse
Host	Mouse
Clonality	Monoclonal
Isotype	IgG1
Calculated MW	87kDa KDa

Description

BRAF: v-raf murine sarcoma viral oncogene homolog B1, also known as BRAF1; RAFB1; B-RAF1; FLJ95109. Entrez Protein NP_004324. It is the main effectors recruited by GTP-bound Ras to activate the MEK-MAP kinase pathway. B-Raf contains three consensus Akt phosphorylation sites (Ser364, Ser428, and Thr439). B-Raf is a key regulatory molecule of the mitogen-activated protein kinase kinase (MEK), it has a long amino-terminal region, the region is essential for homo-dimerization of B-Raf and hetero-dimerization of B-Raf and c-Raf at the plasma membrane, followed by phosphorylation of Thr118 in the amino-terminal B-Raf-specific region. Notably, in calcium ionophore-stimulated HeLa cells, B-Raf could propagate signals to MEK under the basal level of GTP-Ras. Expression of Raf-B is highly restricted with highest levels in the cerebrum and testes and defects in braf are involved in a wide range of cancers. The BRAF gene mutation is frequently detected in papillary thyroid carcinoma, melanocytic nevi, primary cutaneous melanomas and colorectal cancers.

Immunogen

Purified recombinant fragment of human BRAF expressed in E. Coli.

Formulation

Ascitic fluid containing 0.03% sodium azide.

BRAF Antibody - Additional Information

Gene ID 673

Other Names

Serine/threonine-protein kinase B-raf, 2.7.11.1, Proto-oncogene B-Raf, p94, v-Raf murine sarcoma viral oncogene homolog B1, BRAF, BRAF1, RAFB1

Dilution

WB~~1/500 - 1/2000
IHC~~1/200 - 1/1000
IF~~1/200 - 1/1000

Storage

Maintain refrigerated at 2-8°C for up to 6 months. For long term storage store at -20°C in small aliquots to prevent freeze-thaw cycles.

Precautions

BRAF Antibody is for research use only and not for use in diagnostic or therapeutic procedures.

BRAF Antibody - Protein Information

Name BRAF ([HGNC:1097](#))

Synonyms BRAF1, RAFB1

Function

Protein kinase involved in the transduction of mitogenic signals from the cell membrane to the nucleus (Probable). Phosphorylates MAP2K1, and thereby activates the MAP kinase signal transduction pathway (PubMed:[21441910](http://www.uniprot.org/citations/21441910), PubMed:[29433126](http://www.uniprot.org/citations/29433126)). Phosphorylates PFKFB2 (PubMed:[36402789](http://www.uniprot.org/citations/36402789)). May play a role in the postsynaptic responses of hippocampal neurons (PubMed:[1508179](http://www.uniprot.org/citations/1508179)).

Cellular Location

Nucleus. Cytoplasm. Cell membrane. Note=Colocalizes with RGS14 and RAF1 in both the cytoplasm and membranes.

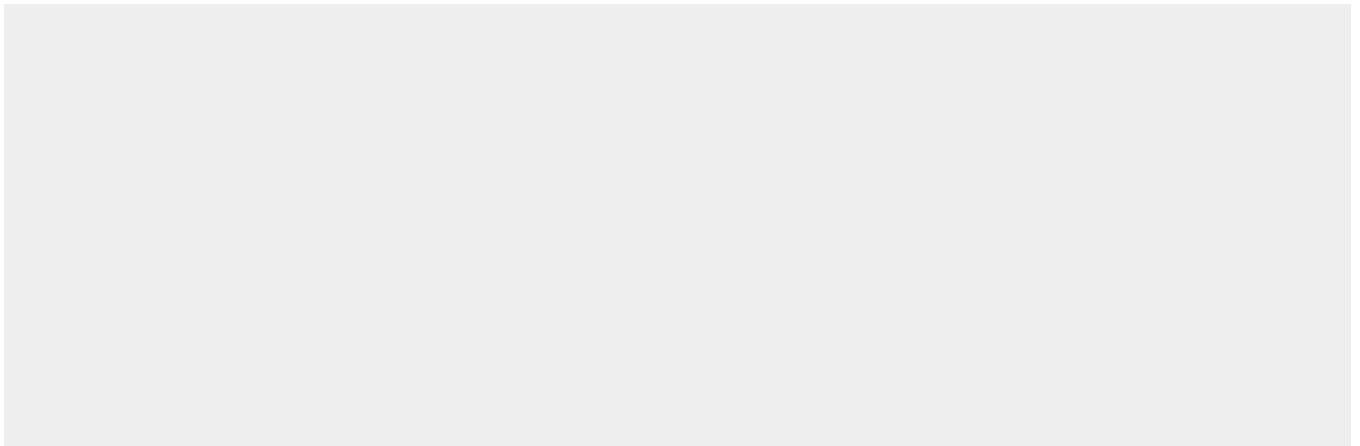
Tissue Location

Brain and testis.

BRAF Antibody - Protocols

Provided below are standard protocols that you may find useful for product applications.

- [Western Blot](#)
- [Blocking Peptides](#)
- [Dot Blot](#)
- [Immunohistochemistry](#)
- [Immunofluorescence](#)
- [Immunoprecipitation](#)
- [Flow Cytometry](#)
- [Cell Culture](#)

BRAF Antibody - Images

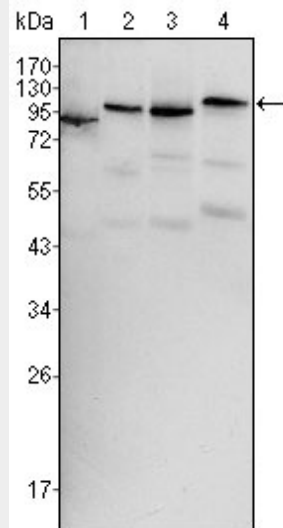


Figure 1: Western blot analysis using BRAF mouse mAb against HeLa (1), HL60 (2), HepG2 (3) and NIH/3T3 (4) cell lysate.

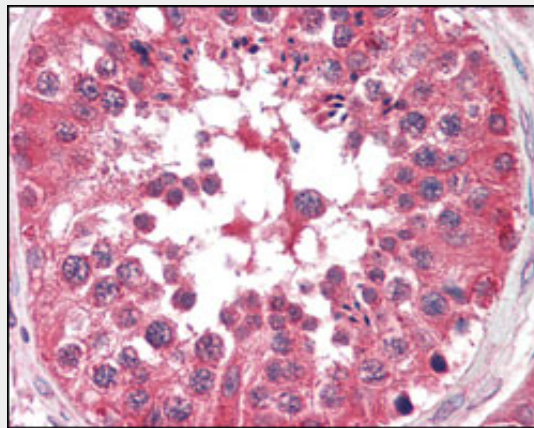


Figure 2: Immunohistochemical analysis of paraffin-embedded human testis tissues using BRAF mouse mAb.

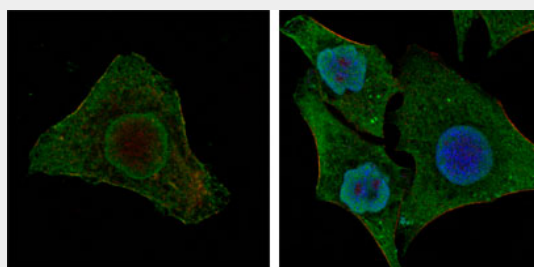


Figure 3: Confocal immunofluorescence analysis of MCF-7 (left) and HepG2 (right) cells using BRAF mouse mAb (green). Red: Actin filaments have been labeled with DY-554 phalloidin. Blue: DRAQ5 fluorescent DNA dye

BRAF Antibody - References

1. J Clin Oncol. 2008 Dec 10;26(35):5705-12.
2. Endocr Relat Cancer. 2006 Mar;13(1):257-69.

BRAF Antibody - Citations

- [HNF4α is a therapeutic target that links AMPK to WNT signalling in early-stage gastric cancer.](#)

