

**Cytokeratin 5 Antibody**  
**Purified Mouse Monoclonal Antibody**  
**Catalog # AO1263a****Specification**

---

**Cytokeratin 5 Antibody - Product Information**

Application	<b>WB, IHC, IF</b>
Primary Accession	<a href="#">P13647</a>
Reactivity	<b>Human</b>
Host	<b>Mouse</b>
Clonality	<b>Monoclonal</b>
Isotype	<b>IgG1</b>
Calculated MW	<b>62.3kDa KDa</b>

**Description**

Cytokeratin 5, also known as CK5, KRT5. It is a member of the keratin gene family. Biochemically, most members of the CK family fall into one of two classes, type I (acidic polypeptides) and type II (basic polypeptides). The type II cytokeratins consist of basic or neutral proteins which are arranged in pairs of heterotypic keratin chains coexpressed during differentiation of simple and stratified epithelial tissues. This type II cytokeratin is specifically expressed in the basal layer of the epidermis with family member KRT14. The type II cytokeratins are clustered in a region of chromosome 12q12-q13. At least one member of the acidic family and one member of the basic family is expressed in all epithelial cells. Cytokeratin 5 is expressed in normal basal cells. Mutations of the Cytokeratin5 gene (KRT5) have been shown to result in the autosomal dominant disorder epidermolysis bullosa (EB). Defects in KRT5 are a cause of epidermolysis bullosa simplex.

**Immunogen**

Purified recombinant fragment of Cytokeratin 5 expressed in E. Coli. <br />

**Formulation**

Ascitic fluid containing 0.03% sodium azide. <br />

**Cytokeratin 5 Antibody - Additional Information**

**Gene ID** 3852

**Other Names**

Keratin, type II cytoskeletal 5, 58 kDa cytokeratin, Cytokeratin-5, CK-5, Keratin-5, K5, Type-II keratin Kb5, KRT5

**Dilution**

WB~~1/500 - 1/2000  
IHC~~1:200~~1000  
IF~~1:200~1000.

**Storage**

Maintain refrigerated at 2-8°C for up to 6 months. For long term storage store at -20°C in small aliquots to prevent freeze-thaw cycles.

**Precautions**

Cytokeratin 5 Antibody is for research use only and not for use in diagnostic or therapeutic procedures.

## Cytokeratin 5 Antibody - Protein Information

**Name** KRT5

### Function

Required for the formation of keratin intermediate filaments in the basal epidermis and maintenance of the skin barrier in response to mechanical stress (By similarity). Regulates the recruitment of Langerhans cells to the epidermis, potentially by modulation of the abundance of macrophage chemotactic cytokines, macrophage inflammatory cytokines and CTNND1 localization in keratinocytes (By similarity).

### Cellular Location

Cytoplasm.

### Tissue Location

Expressed in corneal epithelium (at protein level) (PubMed:26758872). Expressed in keratinocytes (at protein level) (PubMed:20128788, PubMed:31302245).

## Cytokeratin 5 Antibody - Protocols

Provided below are standard protocols that you may find useful for product applications.

- [Western Blot](#)
- [Blocking Peptides](#)
- [Dot Blot](#)
- [Immunohistochemistry](#)
- [Immunofluorescence](#)
- [Immunoprecipitation](#)
- [Flow Cytometry](#)
- [Cell Culture](#)

## Cytokeratin 5 Antibody - Images

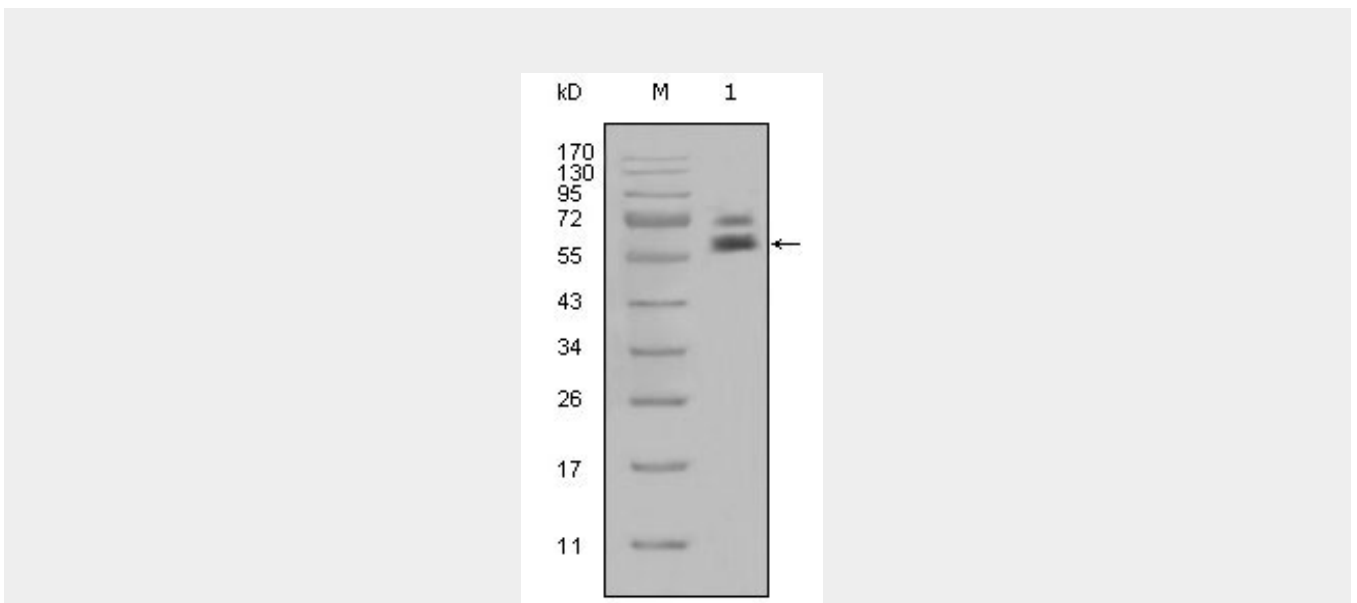


Figure 1: Western blot analysis using CK5 mouse mAb against Hela cell lysate (1).

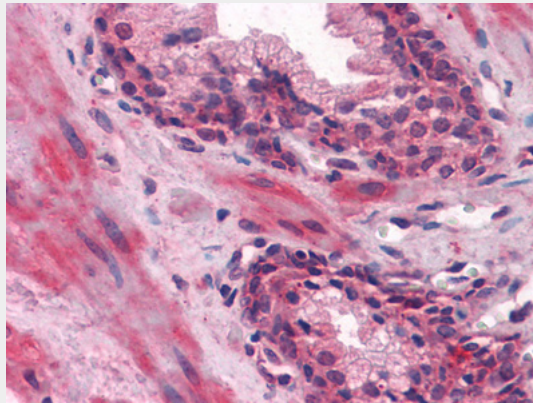


Figure 2: Immunohistochemical analysis of paraffin-embedded human Prostate tissues using LCN1 mouse mAb

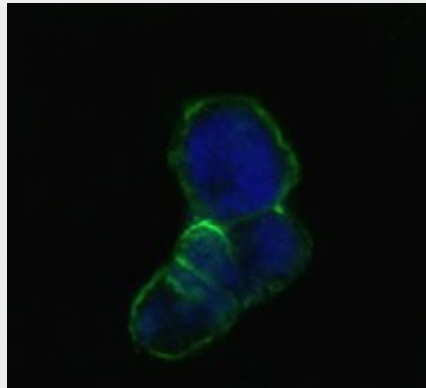


Figure 2: Confocal immunofluorescence analysis of methanol-fixed HEK293 cells transfected with LCN1-hlgGfc using anti-LCN1 monoclonal antibody (green), showing membrane localization. Blue: DRAQ5 fluorescent DNA dye.

### Cytokeratin 5 Antibody - References

1. J Invest Dermatol. 2003 Sep;121(3):482-5.
2. J Cell Sci. 2005 Mar 1;118(Pt 5):1081-90.