

**APOL1 Antibody**  
**Purified Mouse Monoclonal Antibody**  
**Catalog # AO1256a**

**Specification**

---

**APOL1 Antibody - Product Information**

Application	<b>WB</b>
Primary Accession	<a href="#">O14791</a>
Reactivity	<b>Human</b>
Host	<b>Mouse</b>
Clonality	<b>Monoclonal</b>
Isotype	<b>IgG1</b>
Calculated MW	<b>44kDa KDa</b>

**Description**

APOL1(apolipoprotein L, 1), also known as APOL, APO-L, APOL-I. Entrez Protein NP\_001130012. It is a 395aa secreted high density lipoprotein which binds to apolipoprotein A-I. And is involved in the formation of most cholesteryl esters in plasma and also promotes efflux of cholesterol from cells. The apolipoprotein L gene family encodes six highly homologous proteins designated apoL-I to -VI. This apolipoprotein L family member may play a role in lipid exchange and transport throughout the body, as well as in reverse cholesterol transport from peripheral cells to the liver. Several different transcript variants encoding different isoforms have been found for this gene.

**Immunogen**

Purified recombinant fragment of APOL1 expressed in E. Coli.

**Formulation**

Ascitic fluid containing 0.03% sodium azide. <br />

**APOL1 Antibody - Additional Information**

**Gene ID** 8542

**Other Names**

Apolipoprotein L1, Apolipoprotein L, Apo-L, ApoL, Apolipoprotein L-I, ApoL-I, APOL1, APOL

**Dilution**

WB~~1/500 - 1/2000

**Storage**

Maintain refrigerated at 2-8°C for up to 6 months. For long term storage store at -20°C in small aliquots to prevent freeze-thaw cycles.

**Precautions**

APOL1 Antibody is for research use only and not for use in diagnostic or therapeutic procedures.

**APOL1 Antibody - Protein Information**

**Name** APOL1

**Synonyms** APOL

**Function**

May play a role in lipid exchange and transport throughout the body. May participate in reverse cholesterol transport from peripheral cells to the liver.

**Cellular Location**

Secreted.

**Tissue Location**

Plasma. Found on APOA-I-containing high density lipoprotein (HDL3). Expressed in pancreas, lung, prostate, liver, placenta and spleen

**APOL1 Antibody - Protocols**

Provided below are standard protocols that you may find useful for product applications.

- [Western Blot](#)
- [Blocking Peptides](#)
- [Dot Blot](#)
- [Immunohistochemistry](#)
- [Immunofluorescence](#)
- [Immunoprecipitation](#)
- [Flow Cytometry](#)
- [Cell Culture](#)

**APOL1 Antibody - Images**

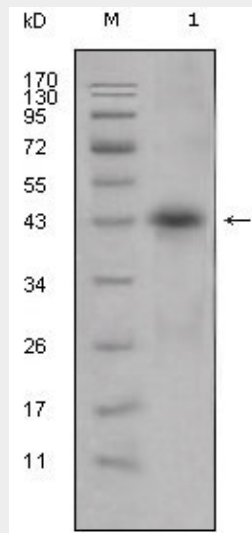


Figure 1: Western blot analysis using APOL1 mouse mAb against human plasma (1).

**APOL1 Antibody - References**

1. Proc Natl Acad Sci U S A. 2007 Mar 6;104(10):4118-23.
2. J Lipid Res. 2005 Mar;46(3):469-74.