

**SKP2 Antibody**  
**Purified Mouse Monoclonal Antibody**  
**Catalog # AO1239a**

**Specification**

---

**SKP2 Antibody - Product Information**

Application	<b>WB</b>
Primary Accession	<a href="#">O13309</a>
Reactivity	<b>Human</b>
Host	<b>Mouse</b>
Clonality	<b>Monoclonal</b>
Isotype	<b>IgG1</b>

**Description**

SKP2: S-phase kinase-associated protein 2 (p45). This gene encodes a member of the F-box protein family which is characterized by an approximately 40 amino acid motif, the F-box. The F-box proteins constitute one of the four subunits of ubiquitin protein ligase complex called SCFs (SKP1-cullin-F-box), which function in phosphorylation-dependent ubiquitination. The F-box proteins are divided into 3 classes: Fbws containing WD-40 domains, Fbls containing leucine-rich repeats, and Fbxs containing either different protein-protein interaction modules or no recognizable motifs. The protein encoded by this gene belongs to the Fbls class; in addition to an F-box, this protein contains 10 tandem leucine-rich repeats. This protein is an essential element of the cyclin A-CDK2 S-phase kinase. It specifically recognizes phosphorylated cyclin-dependent kinase inhibitor 1B (CDKN1B, also referred to as p27 or KIP1) predominantly in S phase and interacts with S-phase kinase-associated protein 1 (SKP1 or p19). In addition, this gene is established as a protooncogene causally involved in the pathogenesis of lymphomas. Alternative splicing of this gene generates 2 transcript variants encoding different isoforms.

**Immunogen**

Purified recombinant fragment of SKP2 (aa1-130) expressed in E. Coli.

**Formulation**

Ascitic fluid containing 0.03% sodium azide. <br />

**SKP2 Antibody - Additional Information**

**Gene ID** 6502

**Other Names**

S-phase kinase-associated protein 2, Cyclin-A/CDK2-associated protein p45, F-box protein Skp2, F-box/LRR-repeat protein 1, p45skp2, SKP2, FBXL1

**Dilution**

WB~~1/500 - 1/2000

**Storage**

Maintain refrigerated at 2-8°C for up to 6 months. For long term storage store at -20°C in small aliquots to prevent freeze-thaw cycles.

**Precautions**

SKP2 Antibody is for research use only and not for use in diagnostic or therapeutic procedures.

## SKP2 Antibody - Protein Information

**Name** SKP2

**Synonyms** FBXL1

### Function

Substrate recognition component of a SCF (SKP1-CUL1-F-box protein) E3 ubiquitin-protein ligase complex which mediates the ubiquitination and subsequent proteasomal degradation of target proteins involved in cell cycle progression, signal transduction and transcription (PubMed:<a href="http://www.uniprot.org/citations/11931757" target="\_blank">11931757</a>, PubMed:<a href="http://www.uniprot.org/citations/12435635" target="\_blank">12435635</a>, PubMed:<a href="http://www.uniprot.org/citations/12769844" target="\_blank">12769844</a>, PubMed:<a href="http://www.uniprot.org/citations/12840033" target="\_blank">12840033</a>, PubMed:<a href="http://www.uniprot.org/citations/15342634" target="\_blank">15342634</a>, PubMed:<a href="http://www.uniprot.org/citations/15668399" target="\_blank">15668399</a>, PubMed:<a href="http://www.uniprot.org/citations/15949444" target="\_blank">15949444</a>, PubMed:<a href="http://www.uniprot.org/citations/16103164" target="\_blank">16103164</a>, PubMed:<a href="http://www.uniprot.org/citations/16262255" target="\_blank">16262255</a>, PubMed:<a href="http://www.uniprot.org/citations/16581786" target="\_blank">16581786</a>, PubMed:<a href="http://www.uniprot.org/citations/16951159" target="\_blank">16951159</a>, PubMed:<a href="http://www.uniprot.org/citations/17908926" target="\_blank">17908926</a>, PubMed:<a href="http://www.uniprot.org/citations/17962192" target="\_blank">17962192</a>, PubMed:<a href="http://www.uniprot.org/citations/22464731" target="\_blank">22464731</a>, PubMed:<a href="http://www.uniprot.org/citations/22770219" target="\_blank">22770219</a>, PubMed:<a href="http://www.uniprot.org/citations/32267835" target="\_blank">32267835</a>). Specifically recognizes phosphorylated CDKN1B/p27kip and is involved in regulation of G1/S transition (By similarity). Degradation of CDKN1B/p27kip also requires CKS1 (By similarity). Recognizes target proteins ORC1, CDT1, RBL2, KMT2A/MLL1, CDK9, RAG2, NBN, FOXO1, UBP43, YTHDF2, and probably MYC, TOB1 and TAL1 (PubMed:<a href="http://www.uniprot.org/citations/11931757" target="\_blank">11931757</a>, PubMed:<a href="http://www.uniprot.org/citations/12435635" target="\_blank">12435635</a>, PubMed:<a href="http://www.uniprot.org/citations/12769844" target="\_blank">12769844</a>, PubMed:<a href="http://www.uniprot.org/citations/12840033" target="\_blank">12840033</a>, PubMed:<a href="http://www.uniprot.org/citations/15342634" target="\_blank">15342634</a>, PubMed:<a href="http://www.uniprot.org/citations/15668399" target="\_blank">15668399</a>, PubMed:<a href="http://www.uniprot.org/citations/15949444" target="\_blank">15949444</a>, PubMed:<a href="http://www.uniprot.org/citations/16103164" target="\_blank">16103164</a>, PubMed:<a href="http://www.uniprot.org/citations/16581786" target="\_blank">16581786</a>, PubMed:<a href="http://www.uniprot.org/citations/16951159" target="\_blank">16951159</a>, PubMed:<a href="http://www.uniprot.org/citations/17908926" target="\_blank">17908926</a>, PubMed:<a href="http://www.uniprot.org/citations/17962192" target="\_blank">17962192</a>, PubMed:<a href="http://www.uniprot.org/citations/22464731" target="\_blank">22464731</a>, PubMed:<a href="http://www.uniprot.org/citations/32267835" target="\_blank">32267835</a>). Degradation of TAL1 also requires STUB1 (PubMed:<a href="http://www.uniprot.org/citations/17962192" target="\_blank">17962192</a>). Recognizes CDKN1A in association with CCNE1 or CCNE2 and CDK2 (PubMed:<a href="http://www.uniprot.org/citations/16262255" target="\_blank">16262255</a>). Promotes ubiquitination and destruction of CDH1 in a CK1-dependent manner, thereby regulating cell migration (PubMed:<a href="http://www.uniprot.org/citations/22770219" target="\_blank">22770219</a>). Following phosphorylation in response to DNA damage, mediates 'Lys-63'-linked ubiquitination of NBN, promoting ATM recruitment to DNA damage sites and DNA repair via homologous recombination (PubMed:<a href="http://www.uniprot.org/citations/22464731" target="\_blank">22464731</a>).

**Cellular Location**  
Cytoplasm. Nucleus

### SKP2 Antibody - Protocols

Provided below are standard protocols that you may find useful for product applications.

- [Western Blot](#)
- [Blocking Peptides](#)
- [Dot Blot](#)
- [Immunohistochemistry](#)
- [Immunofluorescence](#)
- [Immunoprecipitation](#)
- [Flow Cytometry](#)
- [Cell Culture](#)

### SKP2 Antibody - Images

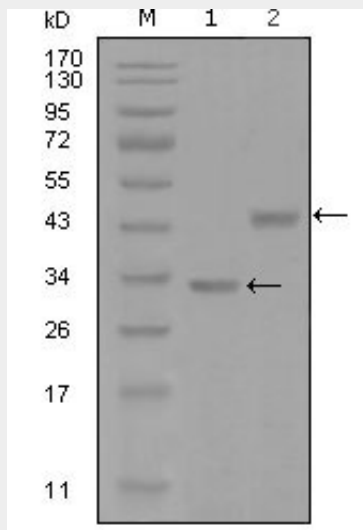


Figure 1: Western blot analysis using SKP2 mouse mAb against truncated Trx-SKP2 recombinant protein (1) and GST-SKP2 (aa1-130) recombinant protein (2).

### SKP2 Antibody - References

1. Acta Biochim Biophys Sin (Shanghai). 2007 Dec;39(12):999-1007.
2. Clin Cancer Res. 2008 Apr 1;14(7):1966-75.