

**ETV1 Antibody**  
**Purified Mouse Monoclonal Antibody**  
**Catalog # AO1230a****Specification**

---

**ETV1 Antibody - Product Information**

Application	<b>WB, IHC</b>
Primary Accession	<a href="#">P50549</a>
Reactivity	<b>Human</b>
Host	<b>Mouse</b>
Clonality	<b>Monoclonal</b>
Isotype	<b>IgG1</b>

**Description**

ETV1: ets variant gene 1. Several members of the Ets gene family encode sequence-specific DNA binding proteins that recognize DNA sequences with a centrally located 5'-GGAA-3' element. All of the Ets proteins recognize the same central core sequence but each protein interacts with unique sequences that flank this core. ER81 (also designated ETV1) binds the motif 5'-CGGAA/T-3'. ER81 is highly expressed in brain, testis, lung and heart. ER81 is also moderately expressed in spleen, pancreas, colon and small intestine. During development, ER81 displays a unique expression patterns which suggests that this transcriptional factor might play an important role in organogenesis. ERK-1 activates ER81 transcriptional activity while MAPKAP kinase 2 inhibits ER81.

**Immunogen**

Purified recombinant fragment of ETV1 (aa1-191) expressed in E. Coli. <br />

**Formulation**

Ascitic fluid containing 0.03% sodium azide. <br />

**ETV1 Antibody - Additional Information**

**Gene ID** 2115

**Other Names**

ETS translocation variant 1, Ets-related protein 81, ETV1, ER81

**Dilution**

WB~~1/500 - 1/2000

IHC~~1:200~~1000

**Storage**

Maintain refrigerated at 2-8°C for up to 6 months. For long term storage store at -20°C in small aliquots to prevent freeze-thaw cycles.

**Precautions**

ETV1 Antibody is for research use only and not for use in diagnostic or therapeutic procedures.

**ETV1 Antibody - Protein Information**

**Name** ETV1 ([HGNC:3490](#))

#### Function

Transcriptional activator that binds to DNA sequences containing the consensus pentanucleotide 5'-CGGA[AT]-3' (PubMed:<a href="http://www.uniprot.org/citations/7651741" target="\_blank">7651741</a>). Required for olfactory dopaminergic neuron differentiation; may directly activate expression of tyrosine hydroxylase (TH) (By similarity).

#### Cellular Location

Nucleus {ECO:0000255|PROSITE-ProRule:PRU00237}.

#### Tissue Location

Very highly expressed in brain, highly expressed in testis, lung and heart, moderately in spleen, small intestine, pancreas and colon, weakly in liver, prostate and thymus, very weakly in skeletal muscle, kidney and ovary and not in placenta and peripheral blood leukocytes.

### ETV1 Antibody - Protocols

Provided below are standard protocols that you may find useful for product applications.

- [Western Blot](#)
- [Blocking Peptides](#)
- [Dot Blot](#)
- [Immunohistochemistry](#)
- [Immunofluorescence](#)
- [Immunoprecipitation](#)
- [Flow Cytometry](#)
- [Cell Culture](#)

### ETV1 Antibody - Images

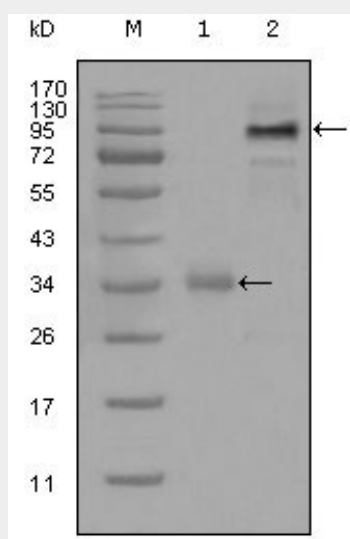


Figure 1: Western blot analysis using ETV1 mouse mAb against truncated Trx-ETV1 recombinant protein (1) and full-length ETV1 (aa1-477)-hlgGfc transfected CHO-K1 cell lysate(2).

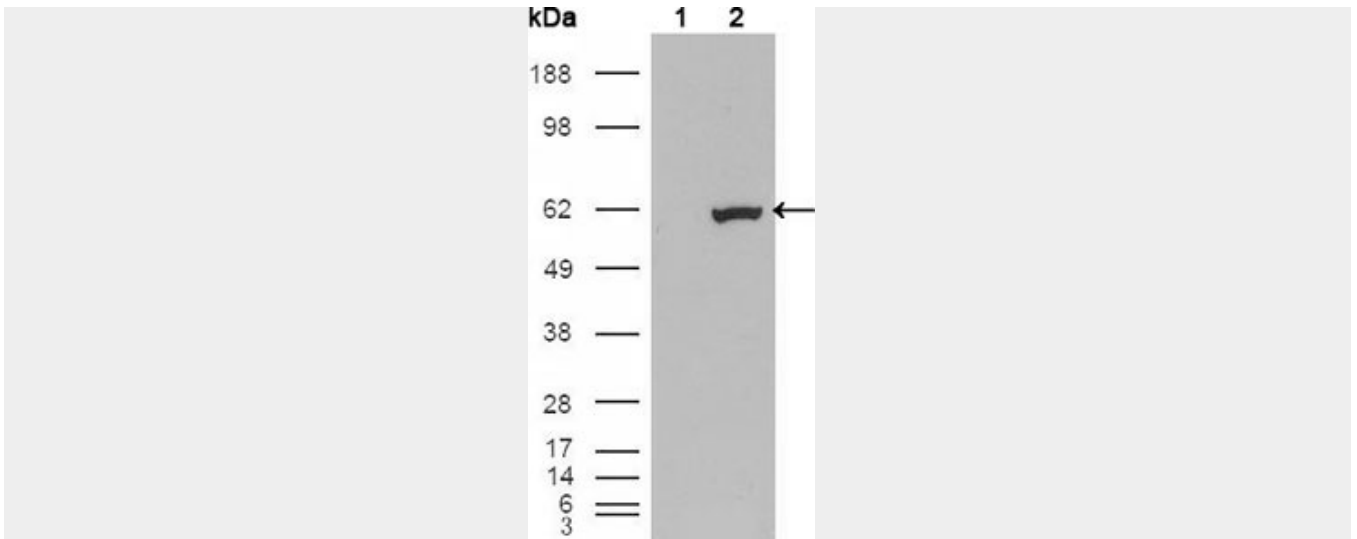


Figure 2: Western blot analysis using ETV1 mouse mAb against HEK293T cells transfected with the pCMV6-ENTRY control (1) and pCMV6-ENTRY ETV1 cDNA (2).

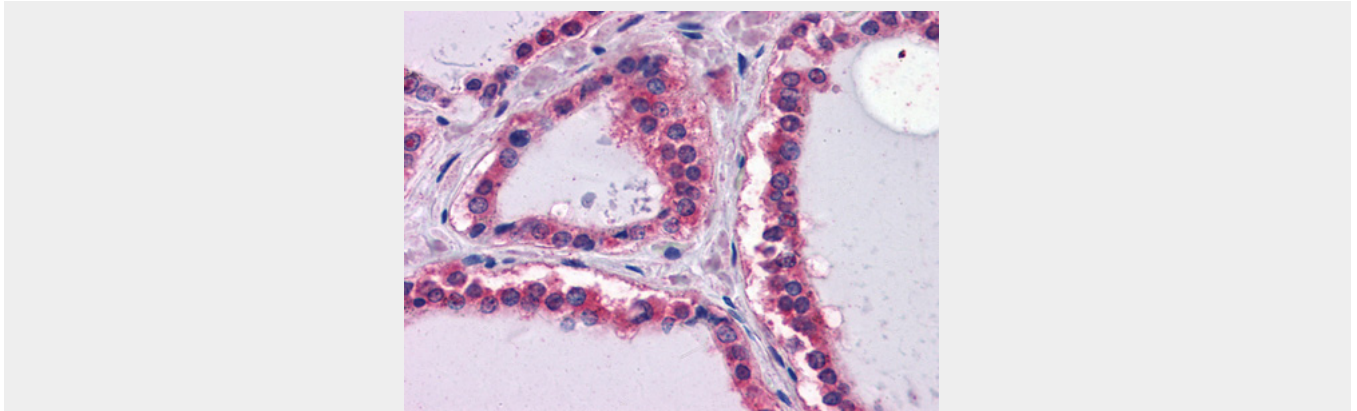


Figure 2: Immunohistochemical analysis of paraffin-embedded human Thyroid tissues using LAMB1 mouse mAb

**ETV1 Antibody - References**

1. Neoplasia. 2006 Oct;8(10):826-32.
2. Cancer Genet Cytogenet. 2008 May;183(1):21-7.