

**ESR1 Antibody**  
**Purified Mouse Monoclonal Antibody**  
**Catalog # AO1223a****Specification**

---

**ESR1 Antibody - Product Information**

Application	<b>WB, IHC, IF</b>
Primary Accession	<a href="#">P03372</a>
Reactivity	<b>Human</b>
Host	<b>Mouse</b>
Clonality	<b>Monoclonal</b>
Isotype	<b>IgG1</b>

**Description**

ESR1: estrogen receptor 1. This gene encodes an estrogen receptor, a ligand-activated transcription factor composed of several domains important for hormone binding, DNA binding, and activation of transcription. The protein localizes to the nucleus where it may form a homodimer or a heterodimer with estrogen receptor 2. Estrogen and its receptors are essential for sexual development and reproductive function, but also play a role in other tissues such as bone. Estrogen receptors are also involved in pathological processes including breast cancer, endometrial cancer, and osteoporosis. Alternative splicing results in several transcript variants, which differ in their 5' UTRs and use different promoters.

**Immunogen**

Purified recombinant fragment of ESR1 (aa130-339) expressed in E. Coli.

**Formulation**

Ascitic fluid containing 0.03% sodium azide. <br />

**ESR1 Antibody - Additional Information**

**Gene ID** 2099

**Other Names**

Estrogen receptor, ER, ER-alpha, Estradiol receptor, Nuclear receptor subfamily 3 group A member 1, ESR1, ESR, NR3A1

**Dilution**

WB~~1/500 - 1/2000  
IHC~~1:200~~1000  
IF~~1:200~1000.

**Storage**

Maintain refrigerated at 2-8°C for up to 6 months. For long term storage store at -20°C in small aliquots to prevent freeze-thaw cycles.

**Precautions**

ESR1 Antibody is for research use only and not for use in diagnostic or therapeutic procedures.

## ESR1 Antibody - Protein Information

**Name** ESR1

**Synonyms** ESR, NR3A1

### Function

Nuclear hormone receptor. The steroid hormones and their receptors are involved in the regulation of eukaryotic gene expression and affect cellular proliferation and differentiation in target tissues. Ligand-dependent nuclear transactivation involves either direct homodimer binding to a palindromic estrogen response element (ERE) sequence or association with other DNA-binding transcription factors, such as AP-1/c-Jun, c-Fos, ATF-2, Sp1 and Sp3, to mediate ERE- independent signaling. Ligand binding induces a conformational change allowing subsequent or combinatorial association with multiprotein coactivator complexes through LXXLL motifs of their respective components. Mutual transrepression occurs between the estrogen receptor (ER) and NF-kappa-B in a cell-type specific manner. Decreases NF-kappa-B DNA-binding activity and inhibits NF-kappa-B-mediated transcription from the IL6 promoter and displace RELA/p65 and associated coregulators from the promoter. Recruited to the NF-kappa-B response element of the CCL2 and IL8 promoters and can displace CREBBP. Present with NF-kappa-B components RELA/p65 and NFKB1/p50 on ERE sequences. Can also act synergistically with NF-kappa-B to activate transcription involving respective recruitment adjacent response elements; the function involves CREBBP. Can activate the transcriptional activity of TFF1. Also mediates membrane-initiated estrogen signaling involving various kinase cascades. Essential for MTA1-mediated transcriptional regulation of BRCA1 and BCAS3 (PubMed:<a href="http://www.uniprot.org/citations/17922032" target="\_blank">17922032</a>). Maintains neuronal survival in response to ischemic reperfusion injury when in the presence of circulating estradiol (17-beta-estradiol/E2) (By similarity).

### Cellular Location

[Isoform 1]: Nucleus {ECO:0000255|PROSITE- ProRule:PRU00407, ECO:0000269|PubMed:12682286, ECO:0000269|PubMed:20074560}. Cytoplasm. Cell membrane; Peripheral membrane protein; Cytoplasmic side. Note=A minor fraction is associated with the inner membrane Nucleus. Golgi apparatus. Cell membrane. Note=Colocalizes with ZDHHC7 and ZDHHC21 in the Golgi apparatus where most probably palmitoylation occurs. Associated with the plasma membrane when palmitoylated

### Tissue Location

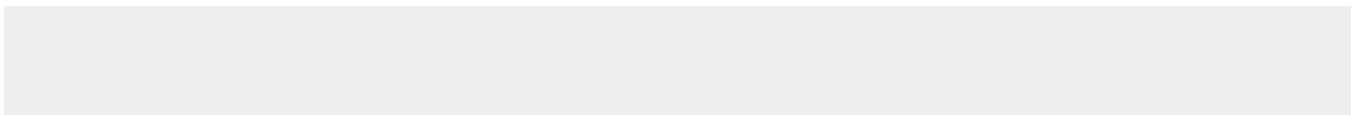
Widely expressed (PubMed:10970861). Not expressed in the pituitary gland (PubMed:10970861)

## ESR1 Antibody - Protocols

Provided below are standard protocols that you may find useful for product applications.

- [Western Blot](#)
- [Blocking Peptides](#)
- [Dot Blot](#)
- [Immunohistochemistry](#)
- [Immunofluorescence](#)
- [Immunoprecipitation](#)
- [Flow Cytometry](#)
- [Cell Culture](#)

## ESR1 Antibody - Images



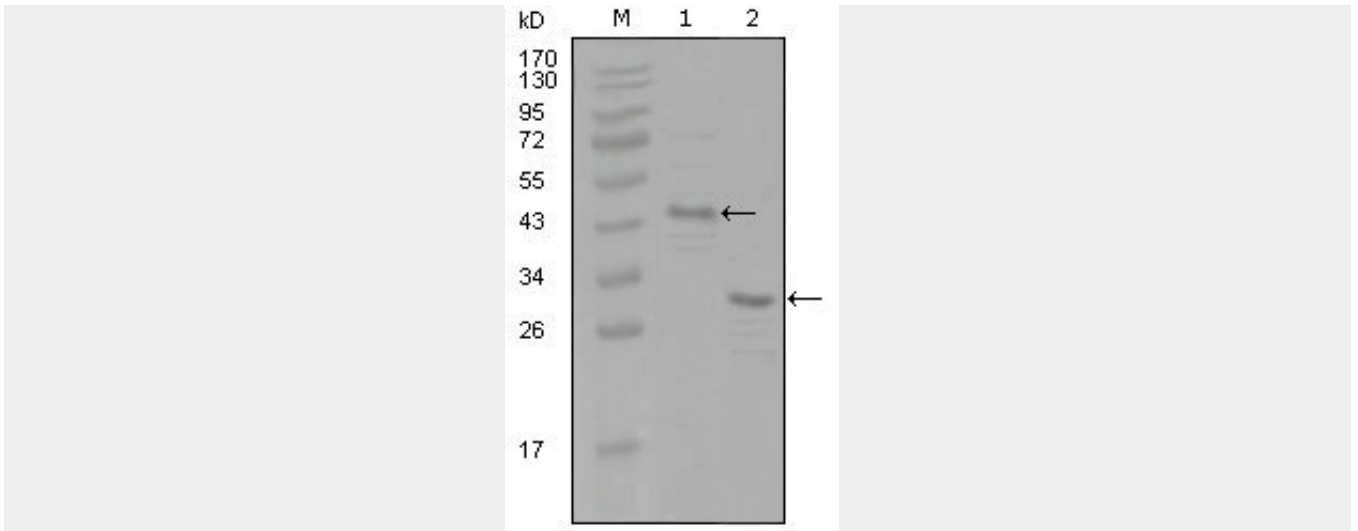


Figure 1: Western blot analysis using ESR1 mouse mAb against truncated Trx-ESR1 recombinant protein (1) and truncated ESR1(aa130-339)-His recombinant protein (2).

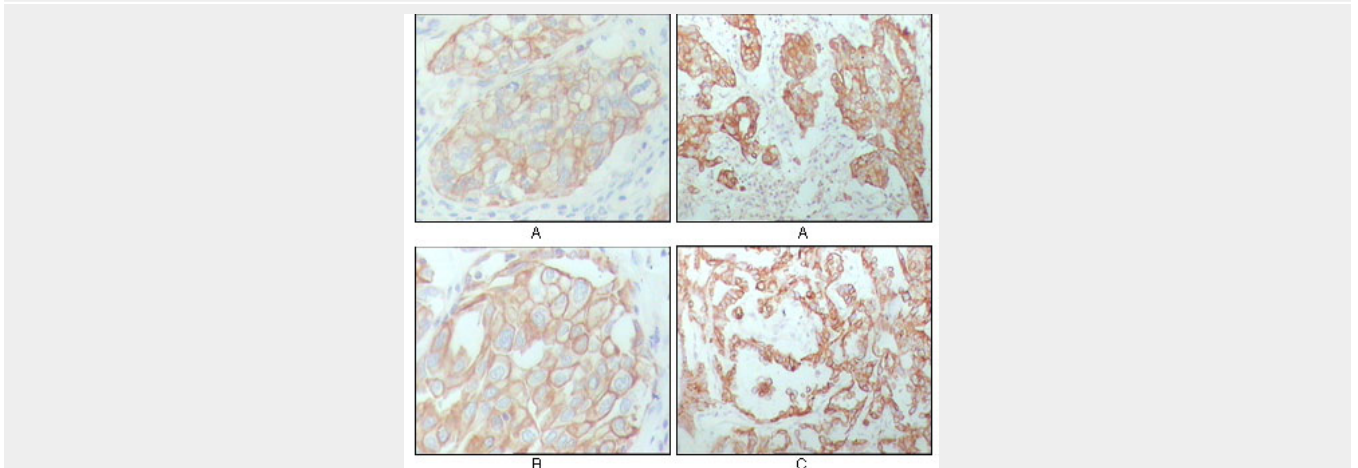


Figure 2: Immunohistochemical analysis of paraffin-embedded human breast carcinoma (A), lung cancer (B) and ovarian cancer tissue (C), showing membrane and cytoplasmic localization with DAB staining using CK8 mouse mAb.

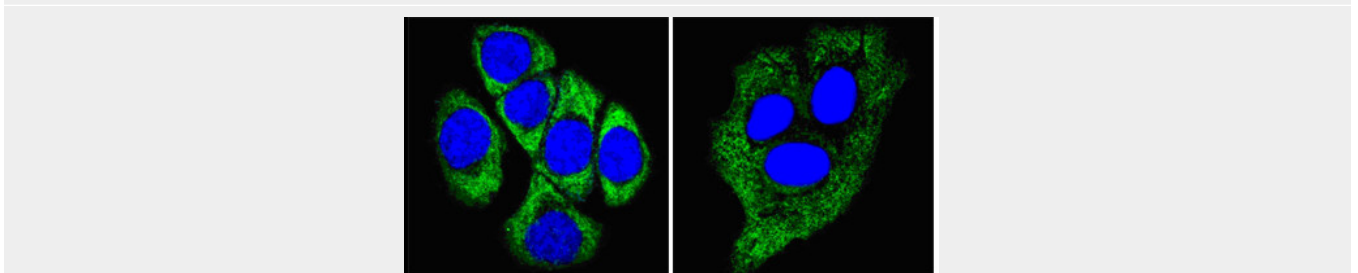


Figure 3: Confocal immunofluorescence analysis of methanol-fixed ECA109 cells (left) and HepG2 cells (right) using anti-CK8 monoclonal antibody (green), showing cytoplasmic localization. Blue: DRAQ5 fluorescent DNA dye.

**ESR1 Antibody - References**

1. Calcif Tissue Int. 2007 May;80(5):307-15.