

**CD10 Antibody**  
**Purified Mouse Monoclonal Antibody**  
**Catalog # AO1209a****Specification**

---

**CD10 Antibody - Product Information**

Application	<b>WB, IHC</b>
Primary Accession	<a href="#">P08473</a>
Reactivity	<b>Human</b>
Host	<b>Mouse</b>
Clonality	<b>Monoclonal</b>
Isotype	<b>IgG1</b>

**Description**

CD10(MME): membrane metallo-endopeptidase. This gene encodes a common acute lymphocytic leukemia antigen that is an important cell surface marker in the diagnosis of human acute lymphocytic leukemia (ALL). This protein is present on leukemic cells of pre-B phenotype, which represent 85% of cases of ALL. This protein is not restricted to leukemic cells, however, and is found on a variety of normal tissues. It is a glycoprotein that is particularly abundant in kidney, where it is present on the brush border of proximal tubules and on glomerular epithelium. The protein is a neutral endopeptidase that cleaves peptides at the amino side of hydrophobic residues and inactivates several peptide hormones including glucagon, enkephalins, substance P, neurotensin, oxytocin, and bradykinin. This gene, which encodes a 100-kD type II transmembrane glycoprotein, exists in a single copy of greater than 45 kb. The 5' untranslated region of this gene is alternatively spliced, resulting in four separate mRNA transcripts. The coding region is not affected by alternative splicing.

**Immunogen**

Purified recombinant fragment of CD10 expressed in E. Coli. <br />

**Formulation**

Ascitic fluid containing 0.03% sodium azide. <br />

**CD10 Antibody - Additional Information**

**Gene ID** 4311

**Other Names**

Nepilysin, 3.4.24.11, Atriopeptidase, Common acute lymphocytic leukemia antigen, CALLA, Enkephalinase, Neutral endopeptidase 24.11, NEP, Neutral endopeptidase, Skin fibroblast elastase, SFE, CD10, MME, EPN

**Dilution**

WB~~1/500 - 1/2000  
IHC~~1/200 - 1/1000

**Storage**

Maintain refrigerated at 2-8°C for up to 6 months. For long term storage store at -20°C in small aliquots to prevent freeze-thaw cycles.

## Precautions

CD10 Antibody is for research use only and not for use in diagnostic or therapeutic procedures.

## CD10 Antibody - Protein Information

**Name** MME {ECO:0000303|PubMed:27588448, ECO:0000312|HGNC:HGNC:7154}

### Function

Thermolysin-like specificity, but is almost confined on acting on polypeptides of up to 30 amino acids (PubMed:<a href="http://www.uniprot.org/citations/15283675" target="\_blank">15283675</a>, PubMed:<a href="http://www.uniprot.org/citations/6208535" target="\_blank">6208535</a>, PubMed:<a href="http://www.uniprot.org/citations/6349683" target="\_blank">6349683</a>, PubMed:<a href="http://www.uniprot.org/citations/8168535" target="\_blank">8168535</a>). Biologically important in the destruction of opioid peptides such as Met- and Leu-enkephalins by cleavage of a Gly-Phe bond (PubMed:<a href="http://www.uniprot.org/citations/17101991" target="\_blank">17101991</a>, PubMed:<a href="http://www.uniprot.org/citations/6349683" target="\_blank">6349683</a>). Catalyzes cleavage of bradykinin, substance P and neurotensin peptides (PubMed:<a href="http://www.uniprot.org/citations/6208535" target="\_blank">6208535</a>). Able to cleave angiotensin-1, angiotensin-2 and angiotensin 1-9 (PubMed:<a href="http://www.uniprot.org/citations/15283675" target="\_blank">15283675</a>, PubMed:<a href="http://www.uniprot.org/citations/6349683" target="\_blank">6349683</a>). Involved in the degradation of atrial natriuretic factor (ANF) and brain natriuretic factor (BNP(1-32)) (PubMed:<a href="http://www.uniprot.org/citations/16254193" target="\_blank">16254193</a>, PubMed:<a href="http://www.uniprot.org/citations/2531377" target="\_blank">2531377</a>, PubMed:<a href="http://www.uniprot.org/citations/2972276" target="\_blank">2972276</a>). Displays UV-inducible elastase activity toward skin preelastic and elastic fibers (PubMed:<a href="http://www.uniprot.org/citations/20876573" target="\_blank">20876573</a>).

### Cellular Location

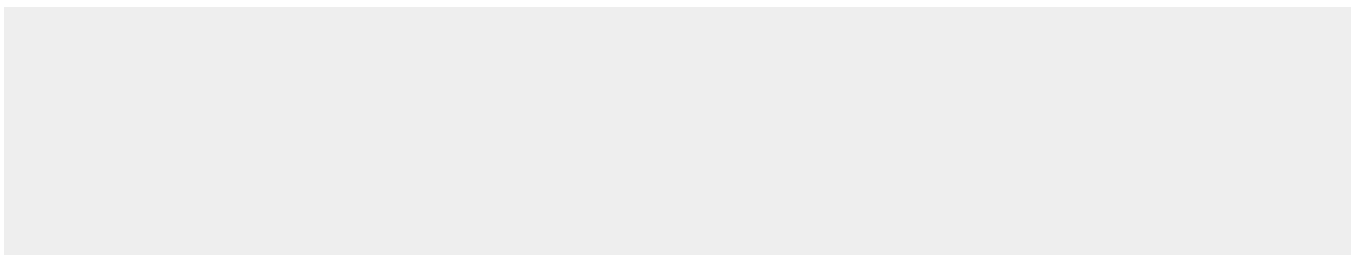
Cell membrane; Single-pass type II membrane protein

## CD10 Antibody - Protocols

Provided below are standard protocols that you may find useful for product applications.

- [Western Blot](#)
- [Blocking Peptides](#)
- [Dot Blot](#)
- [Immunohistochemistry](#)
- [Immunofluorescence](#)
- [Immunoprecipitation](#)
- [Flow Cytometry](#)
- [Cell Culture](#)

## CD10 Antibody - Images



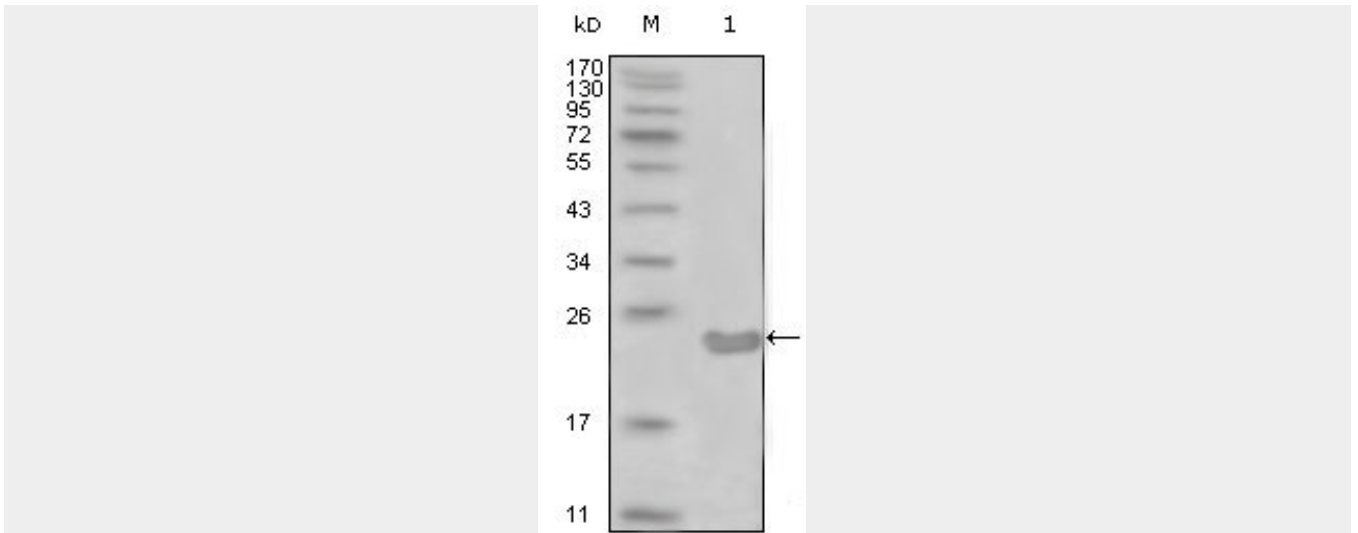


Figure 1: Western blot analysis using CD10 mouse mAb against truncated CD10-His recombinant protein (1).

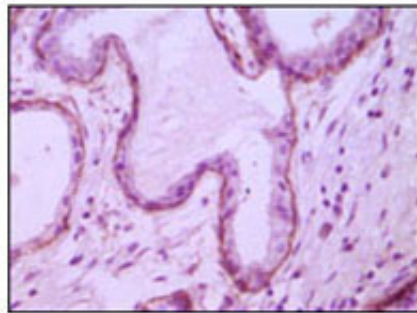


Figure 2: Immunohistochemical analysis of paraffin-embedded human breast ductal myoepithelium, showing cytoplasmic and membrane location with DAB staining using CD10 mouse mAb.

### CD10 Antibody - References

1. Journal of Gastroenterology, 1996 Feb. 31(1):12-7.
2. British Journal of Haematology, 1995, 89(3):623-6.