

STYK1 Antibody
Purified Mouse Monoclonal Antibody
Catalog # AO1140a**Specification**

STYK1 Antibody - Product Information

Application	WB, IHC
Primary Accession	O6J9G0
Reactivity	Human
Host	Mouse
Clonality	Monoclonal
Isotype	IgG1

Description

Protein kinases (PKs) represent a well studied but most diverse protein superfamily. The covalent, reversible linkage of phosphate to serine, threonine, and tyrosine residues of substrate proteins by protein kinases is probably ubiquitous cellular mechanism for regulation of physiological processes. It is known to us that most signaling pathways impinge at some point on protein kinases. Here we report a human putative receptor protein kinase cDNA STYK1. The STYK1 cDNA is 2749 base pairs in length and contains an open reading frame encoding 422 amino acids. The STYK1 gene is mapped to human chromosome 12p13 and 11 exons were found. RT-PCR showed that STYK1 is widely expressed in human tissues.

Immunogen

Purified recombinant fragment of STYK1 expressed in E. Coli.

Formulation

Ascitic fluid containing 0.03% sodium azide.

STYK1 Antibody - Additional Information

Gene ID 55359

Other Names

Tyrosine-protein kinase STYK1, 2.7.10.2, Novel oncogene with kinase domain, Protein PK-unique, Serine/threonine/tyrosine kinase 1, STYK1, NOK

Dilution

WB~~1/500 - 1/2000

IHC~~1/500 - 1/2000

Storage

Maintain refrigerated at 2-8°C for up to 6 months. For long term storage store at -20°C in small aliquots to prevent freeze-thaw cycles.

Precautions

STYK1 Antibody is for research use only and not for use in diagnostic or therapeutic procedures.

STYK1 Antibody - Protein Information

Name STYK1

Synonyms NOK

Function

Probable tyrosine protein-kinase, which has strong transforming capabilities on a variety of cell lines. When overexpressed, it can also induce tumor cell invasion as well as metastasis in distant organs. May act by activating both MAP kinase and phosphatidylinositol 3'-kinases (PI3K) pathways (By similarity).

Cellular Location

Membrane; Single-pass membrane protein

Tissue Location

Widely expressed. Highly expressed in brain, placenta and prostate. Expressed in tumor cells such as hepatoma cells L-02, cervix carcinoma cells HeLa, ovary cancer cells Ho8910 and chronic myelogenous leukemia cells K-562, but not in other tumor cells such as epidermoid carcinoma (A-431). Undetectable in most normal lung tissues, widely expressed in lung cancers

STYK1 Antibody - Protocols

Provided below are standard protocols that you may find useful for product applications.

- [Western Blot](#)
- [Blocking Peptides](#)
- [Dot Blot](#)
- [Immunohistochemistry](#)
- [Immunofluorescence](#)
- [Immunoprecipitation](#)
- [Flow Cytometry](#)
- [Cell Culture](#)

STYK1 Antibody - Images

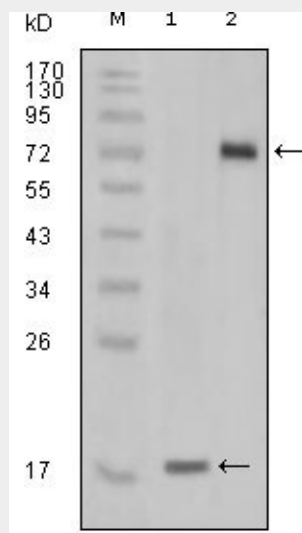


Figure 1: Western blot analysis using STYK1 mouse mAb against truncated STYK1 recombinant protein(1) and STYK1 (aa47-422)-hlgGfC transfected CHO-K1 cell lysate (2).

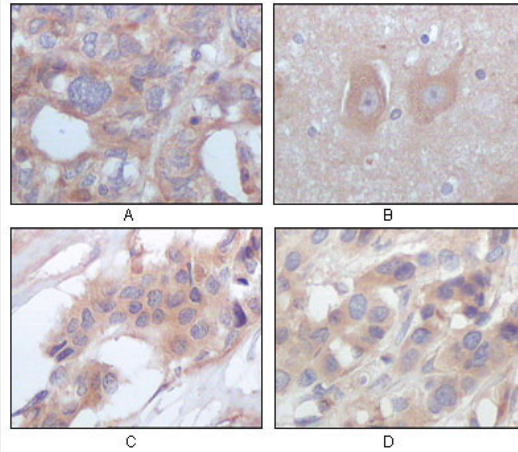


Figure 2: Immunohistochemical analysis of paraffin-embedded human ovary carcinoma (A), normal cerebrum tissues (B), breast infiltrating carcinoma (C) and breast infiltrating carcinoma (D), showing cytoplasmic localization using STYK1/NOK mouse mAb with DAB staining.

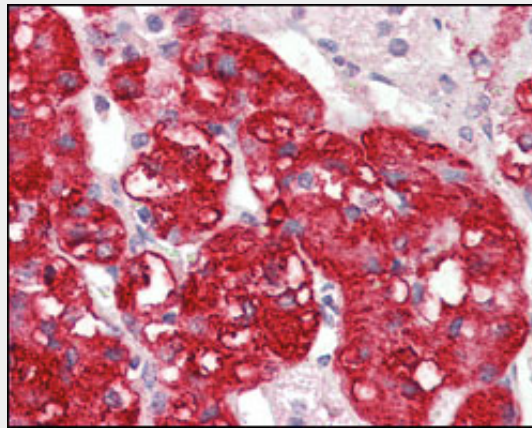


Figure 3: Immunohistochemical analysis of paraffin-embedded human adrenal tissues using STYK1/NOK mouse mAb with DAB staining.

STYK1 Antibody - References

1. Liu L, Yu XZ and Li TS, et al. Mol Biol Rep. 2003, Jun, 30(2):91-6.
2. Moriai R. , Kobayashi D.and Amachika T. , et al. Mol Biol Rep. 2007, Apr, 6.