

**EphB6 Antibody**  
**Purified Mouse Monoclonal Antibody**  
**Catalog # AO1051a****Specification**

---

**EphB6 Antibody - Product Information**

Application	<b>WB, IHC</b>
Primary Accession	<a href="#">O15197</a>
Reactivity	<b>Human</b>
Host	<b>Mouse</b>
Clonality	<b>Monoclonal</b>
Isotype	<b>IgG1</b>

**Description**

EPH receptor B6 (EphB6), with 1006-amino acid protein (~ 110 kDa), belongs to the ephrin receptor subfamily of the protein-tyrosine kinase family. Eph receptors and ephrin ligands are membrane-bound cell-cell communication molecules with well-defined functions in development. EphB6 is expressed both in a variety of embryonic and adult tissues. EphB6 is a unique member in the Eph family of receptor tyrosine kinases in that its kinase domain contains several alterations in conserved amino acids and is catalytically inactive. EphB6 can both positively and negatively regulate cell adhesion and migration and tyrosine phosphorylation of the receptor by an Src family kinase acts as the molecular switch for the functional transition.

**Immunogen**

Purified recombinant fragment of EphB6 expressed in E. Coli.

**Formulation**

Purified antibody in PBS containing 0.03% sodium azide.

**EphB6 Antibody - Additional Information**

**Gene ID** 2051

**Other Names**

Ephrin type-B receptor 6, HEP, Tyrosine-protein kinase-defective receptor EPH-6, EPHB6

**Dilution**

WB~~1/500 - 1/2000

IHC~~1/200 - 1/1000

**Storage**

Maintain refrigerated at 2-8°C for up to 6 months. For long term storage store at -20°C in small aliquots to prevent freeze-thaw cycles.

**Precautions**

EphB6 Antibody is for research use only and not for use in diagnostic or therapeutic procedures.

**EphB6 Antibody - Protein Information**

## Name EPHB6

### Function

Kinase-defective receptor for members of the ephrin-B family. Binds to ephrin-B1 and ephrin-B2. Modulates cell adhesion and migration by exerting both positive and negative effects upon stimulation with ephrin-B2. Inhibits JNK activation, T-cell receptor-induced IL-2 secretion and CD25 expression upon stimulation with ephrin-B2.

### Cellular Location

Membrane; Single-pass type I membrane protein.

### Tissue Location

Expressed in brain. Expressed in non invasive breast carcinoma cell lines (at protein level). Strong expression in brain and pancreas, and weak expression in other tissues, such as heart, placenta, lung, liver, skeletal muscle and kidney. Expressed in breast non invasive tumors but not in metastatic lesions. Isoform 3 is expressed in cell lines of glioblastomas, anaplastic astrocytomas, gliosarcomas and astrocytomas. Isoform 3 is not detected in normal tissues.

## EphB6 Antibody - Protocols

Provided below are standard protocols that you may find useful for product applications.

- [Western Blot](#)
- [Blocking Peptides](#)
- [Dot Blot](#)
- [Immunohistochemistry](#)
- [Immunofluorescence](#)
- [Immunoprecipitation](#)
- [Flow Cytometry](#)
- [Cell Culture](#)

## EphB6 Antibody - Images

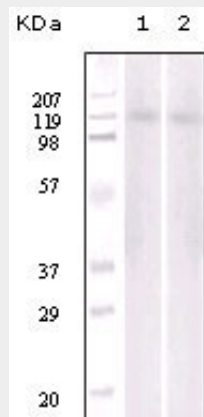


Figure 1: Western blot analysis of Jurkat (1) and NIH/3T3 (2) cell lysate using EphB6 mouse mAb.

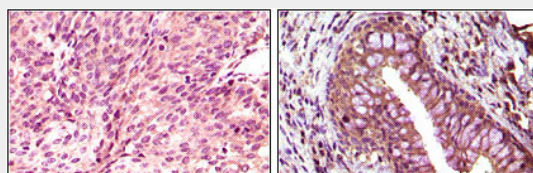


Figure 2: Immunohistochemical analysis of paraffin-embedded human bladder carcinoma (left) and return carcinoma (right) tissue, showing cytoplasmic localization using EphB6 mouse mAb with DAB staining.

#### **EphB6 Antibody - References**

1. Kazushige Ogawa, Hiroki Wada, Noriyoshi Okada J Cell Sci. 2006 Feb 1;119(Pt 3):559-70.
2. Hiroshi Matsuoka, Hiroya Obama, Meghan L. Kelly J Biol Chem. 2005 Aug 12;280(32):29355-63.