

MCL-1 Antibody
Purified Mouse Monoclonal Antibody
Catalog # AO1027a**Specification**

MCL-1 Antibody - Product Information

Application	WB, IHC, IF
Primary Accession	Q07820
Reactivity	Human
Host	Mouse
Clonality	Monoclonal
Isotype	IgG1
Calculated MW	37kDa KDa

Description

Mcl-1 (Myeloid cell leukemia-1) is Bcl-2-related and was identified as an early-induction gene that increased in expression during the differentiation of human myeloblastic leukemia cell ML-1, or exposure to different DNA damaging agents. The level of Mcl-1 is decreased in peripheral B lymphocytes undergoing apoptosis following treatment with apoptotic stimuli such as TGF-alpha 1 and forskolin. Expression of Mcl-1 is able to delay apoptosis induced by over-expression of c-myc in CHO 5AHSmyc cells. In hematopoietic FDC-P1 cells, Mcl-1 interacts with another Bcl-2-related protein, Bax, and prolongs cell viability after treatment with different apoptotic reagents. This monoclonal antibody detected a 37kd MCL1 in BCBL-1 cell lysate.

Immunogen

Purified recombinant fragment of human MCL-1 expressed in E. Coli.

Formulation

Purified antibody in PBS containing 0.03% sodium azide.

MCL-1 Antibody - Additional Information

Gene ID 4170

Other Names

Induced myeloid leukemia cell differentiation protein Mcl-1, Bcl-2-like protein 3, Bcl2-L-3, Bcl-2-related protein EAT/mcl1, mcl1/EAT, MCL1, BCL2L3

Dilution

WB~~1/500 - 1/2000

IHC~~1/200 - 1/1000

IF~~1/200 - 1/1000

Storage

Maintain refrigerated at 2-8°C for up to 6 months. For long term storage store at -20°C in small aliquots to prevent freeze-thaw cycles.

Precautions

MCL-1 Antibody is for research use only and not for use in diagnostic or therapeutic procedures.

MCL-1 Antibody - Protein Information

Name MCL1

Synonyms BCL2L3

Function

Involved in the regulation of apoptosis versus cell survival, and in the maintenance of viability but not of proliferation. Mediates its effects by interactions with a number of other regulators of apoptosis. Isoform 1 inhibits apoptosis. Isoform 2 promotes apoptosis.

Cellular Location

Membrane; Single-pass membrane protein. Cytoplasm. Mitochondrion. Nucleus, nucleoplasm
Note=Cytoplasmic, associated with mitochondria

MCL-1 Antibody - Protocols

Provided below are standard protocols that you may find useful for product applications.

- [Western Blot](#)
- [Blocking Peptides](#)
- [Dot Blot](#)
- [Immunohistochemistry](#)
- [Immunofluorescence](#)
- [Immunoprecipitation](#)
- [Flow Cytometry](#)
- [Cell Culture](#)

MCL-1 Antibody - Images

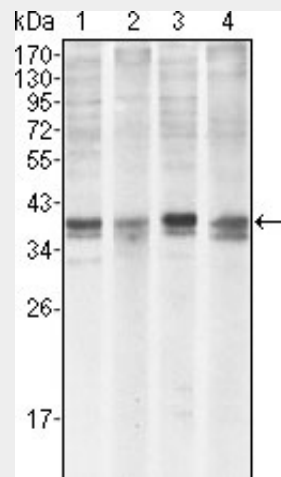


Figure 1: Western blot analysis using MCL1 mouse mAb against HeLa (1), BCBL-1 (2), Jurkat (3) and HL60 (4) cell lysate.

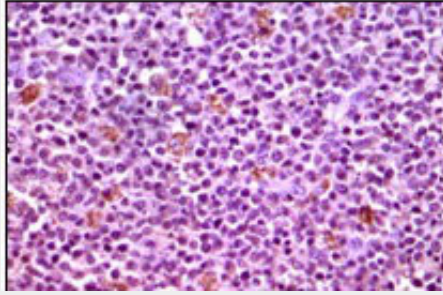


Figure 2: Immunohistochemical analysis of paraffin-embedded human lymphnode tissues using MCL1 mouse mAb with DAB staining.

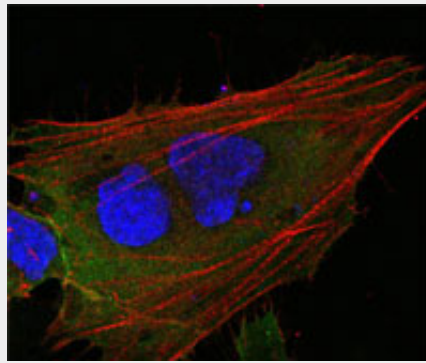


Figure 3: Confocal immunofluorescence analysis of HepG2 cells using MCL1 mouse mAb (green). Red: Actin filaments have been labeled with DY-554 phalloidin. Blue: DRAQ5 fluorescent DNA dye.

MCL-1 Antibody - References

1. Ota, N. et al. J. Hum. Genet. 2000. 46: 254-269.
2. Schwertfeger KL, Ryder JW, Anderson SM J Mammary Gland Biol Neoplasia 2000, 3 : 236-251.