

Anti-Integrin β 3 (Extracellular region) Antibody

Catalog # AN1823

Specification

Anti-Integrin β 3 (Extracellular region) Antibody - Product Information

Application	WB
Primary Accession	P05106
Reactivity	Bovine
Host	Mouse
Clonality	Mouse Monoclonal
Isotype	IgG1
Calculated MW	87058

Anti-Integrin β 3 (Extracellular region) Antibody - Additional Information

Gene ID **3690**

Other Names

Integrin beta-3, Platelet membrane glycoprotein IIIa, GPIIIa, CD61, ITGB3, GP3A

Target/Specificity

Integrins are cell adhesion molecules that can mediate bidirectional transfer of signals across the plasma membrane. The cytoplasmic domains of integrin family members interact with components of the signal transduction apparatus within cells. Integrin receptors contain noncovalently associated α and β subunits that consist of a large extracellular region (the ligand-binding domain), a short transmembrane region, and a cytoplasmic domain of varying length. In mammals, at least 17 α subunits and 8 β subunits have been identified and these proteins can heterodimerize to form at least 22 different receptors. The integrin β 2 subunit associates with integrin α L to form a receptor for ICAM family members. Integrin β 2/ α L is involved in a variety of immune phenomena including leukocyte-endothelial cell interaction, cytotoxic T-cell mediated killing, and antibody dependent killing by granulocytes and monocytes.

Storage

Maintain refrigerated at 2-8°C for up to 6 months. For long term storage store at -20°C in small aliquots to prevent freeze-thaw cycles.

Precautions

Anti-Integrin β 3 (Extracellular region) Antibody is for research use only and not for use in diagnostic or therapeutic procedures.

Shipping

Blue Ice

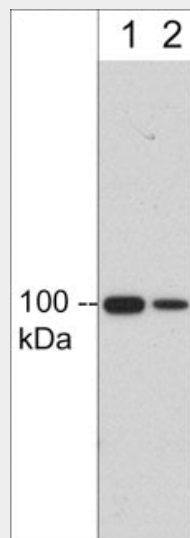
Anti-Integrin β 3 (Extracellular region) Antibody - Protocols

Provided below are standard protocols that you may find useful for product applications.

- [Western Blot](#)
- [Blocking Peptides](#)

- [Dot Blot](#)
- [Immunohistochemistry](#)
- [Immunofluorescence](#)
- [Immunoprecipitation](#)
- [Flow Cytometry](#)
- [Cell Culture](#)

Anti-Integrin $\beta 3$ (Extracellular region) Antibody - Images



Western blot analysis of human umbilical vein endothelial cells (HUVEC). The blots were probed with mouse monoclonal anti-integrin $\beta 3$ (IM5811) at 1:250 (lane 1) and 1:1000 (lane 2).

Anti-Integrin $\beta 3$ (Extracellular region) Antibody - Background

Integrins are cell adhesion molecules that can mediate bidirectional transfer of signals across the plasma membrane. The cytoplasmic domains of integrin family members interact with components of the signal transduction apparatus within cells. Integrin receptors contain noncovalently associated α and β subunits that consist of a large extracellular region (the ligand-binding domain), a short transmembrane region, and a cytoplasmic domain of varying length. In mammals, at least 17 α subunits and 8 β subunits have been identified and these proteins can heterodimerize to form at least 22 different receptors. The integrin $\beta 2$ subunit associates with integrin αL to form a receptor for ICAM family members. Integrin $\beta 2/\alpha L$ is involved in a variety of immune phenomena including leukocyte-endothelial cell interaction, cytotoxic T-cell mediated killing, and antibody dependent killing by granulocytes and monocytes.