

Anti-CrkL (Tyr-207), Phosphospecific Antibody
Catalog # AN1730**Specification****Anti-CrkL (Tyr-207), Phosphospecific Antibody - Product Information**

Primary Accession	P46109
Reactivity	Bovine, Chicken, Drosophila, C.Elegans
Host	Rabbit
Clonality	Rabbit Polyclonal
Isotype	IgG
Calculated MW	33777

Anti-CrkL (Tyr-207), Phosphospecific Antibody - Additional Information

Gene ID	1399
Other Names	v-crk sarcoma virus CT10 oncogene homolog, CRKII, CRKL

Target/Specificity

The Crk family of adaptor proteins (Crk I, Crk II and CrkL) are Src Homology 2 (SH2) and Src Homology 3 (SH3) domain-containing proteins that form protein complexes important for transmitting signals downstream of tyrosine kinases. Both Crk II and CrkL are composed of a single SH2 domain, followed by two tandem SH3 domains. Crk II is also alternatively spliced to a minor product, Crk I, which is structurally and functionally more similar to the v-Crk oncogene. Both Crk II and CrkL are ubiquitously expressed and their SH domains are highly homologous, however both are required for mouse development and have distinct non-overlapping phenotypes in knockout mice. Phosphorylation may be important for regulating Crk activity. Crk II Tyr-221 (CrkL Tyr-207) phosphorylation is a negative regulatory site, while Crk Tyr-251 phosphorylation in the SH3 domain is a positive regulatory site. EGF stimulation induces phosphorylation of Tyr-251, which increases binding of Crk to the SH2 domain of Abl, and promotes transactivation of Abl.

Format

Antigen Affinity Purified

Storage

Maintain refrigerated at 2-8°C for up to 6 months. For long term storage store at -20°C in small aliquots to prevent freeze-thaw cycles.

Precautions

Anti-CrkL (Tyr-207), Phosphospecific Antibody is for research use only and not for use in diagnostic or therapeutic procedures.

Shipping

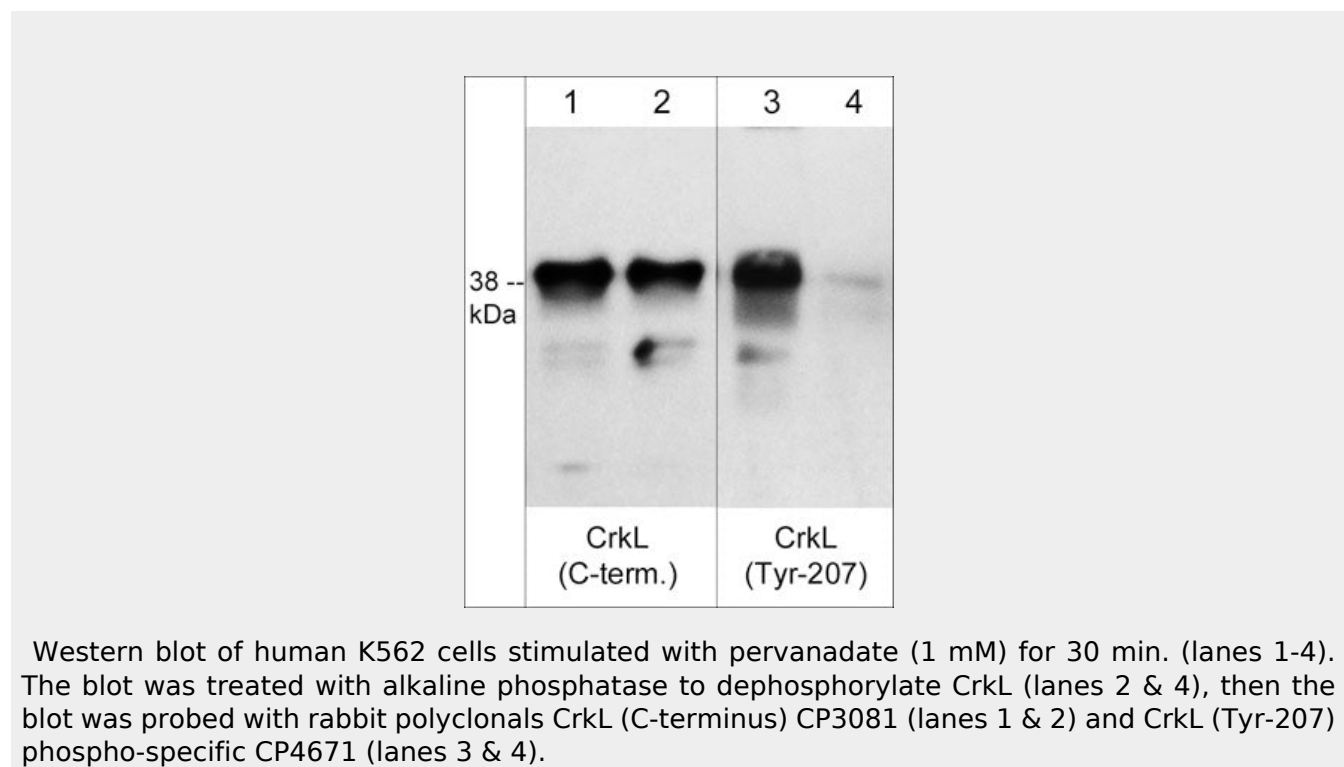
Blue Ice

Anti-CrkL (Tyr-207), Phosphospecific Antibody - Protocols

Provided below are standard protocols that you may find useful for product applications.

- [Western Blot](#)
- [Blocking Peptides](#)
- [Dot Blot](#)
- [Immunohistochemistry](#)
- [Immunofluorescence](#)
- [Immunoprecipitation](#)
- [Flow Cytometry](#)
- [Cell Culture](#)

Anti-CrkL (Tyr-207), Phosphospecific Antibody - Images



Anti-CrkL (Tyr-207), Phosphospecific Antibody - Background

The Crk family of adaptor proteins (Crk I, Crk II and CrkL) are Src Homology 2 (SH2) and Src Homology 3 (SH3) domain-containing proteins that form protein complexes important for transmitting signals downstream of tyrosine kinases. Both Crk II and CrkL are composed of a single SH2 domain, followed by two tandem SH3 domains. Crk II is also alternatively spliced to a minor product, Crk I, which is structurally and functionally more similar to the v-Crk oncogene. Both Crk II and CrkL are ubiquitously expressed and their SH domains are highly homologous, however both are required for mouse development and have distinct non-overlapping phenotypes in knockout mice. Phosphorylation may be important for regulating Crk activity. Crk II Tyr-221 (CrkL Tyr-207) phosphorylation is a negative regulatory site, while Crk Tyr-251 phosphorylation in the SH3 domain is a positive regulatory site. EGF stimulation induces phosphorylation of Tyr-251, which increases binding of Crk to the SH2 domain of Abl, and promotes transactivation of Abl.