

Anti-Connexin-43 (C-terminal region) Antibody
Catalog # AN1720**Specification****Anti-Connexin-43 (C-terminal region) Antibody - Product Information**

Application	WB
Primary Accession	P17302
Reactivity	Bovine, Chicken
Host	Mouse
Clonality	Mouse Monoclonal
Isotype	IgG1
Calculated MW	43008

Anti-Connexin-43 (C-terminal region) Antibody - Additional Information

Gene ID 2697

Other Names

Gap junction alpha-1 43 GJA1 CXA1

Target/Specificity

Connexin-43 (Cx43, CXA1, Gap Junction α 1) is a member of the large family of gap junction proteins. Connexins assemble as a hexamer and are transported to the plasma membrane to create a hemichannel that can associate with hemichannels on nearby cells to create cell-to-cell channels that cluster together to form gap junctions. Gap junction communication is critical for cell to cell communication during development and regulation of cell growth. Phosphorylation of connexin-43 is important in regulating both the assembly and the function of gap junctions. PKC phosphorylates Ser-368 in connexin-43 after activation of cells with phorbol esters. This phosphorylation event decreases cell-to-cell communication. In addition, the tyrosine kinase, c-Src, can interact with and phosphorylate Tyr-265 in connexin-43 leading to inhibition of gap junction communication. Thus, connexin-43 phosphorylation may be an important mode for regulating gap junctional communication.

Format

Antigen Affinity Purified

Storage

Maintain refrigerated at 2-8°C for up to 6 months. For long term storage store at -20°C in small aliquots to prevent freeze-thaw cycles.

Precautions

Anti-Connexin-43 (C-terminal region) Antibody is for research use only and not for use in diagnostic or therapeutic procedures.

Shipping

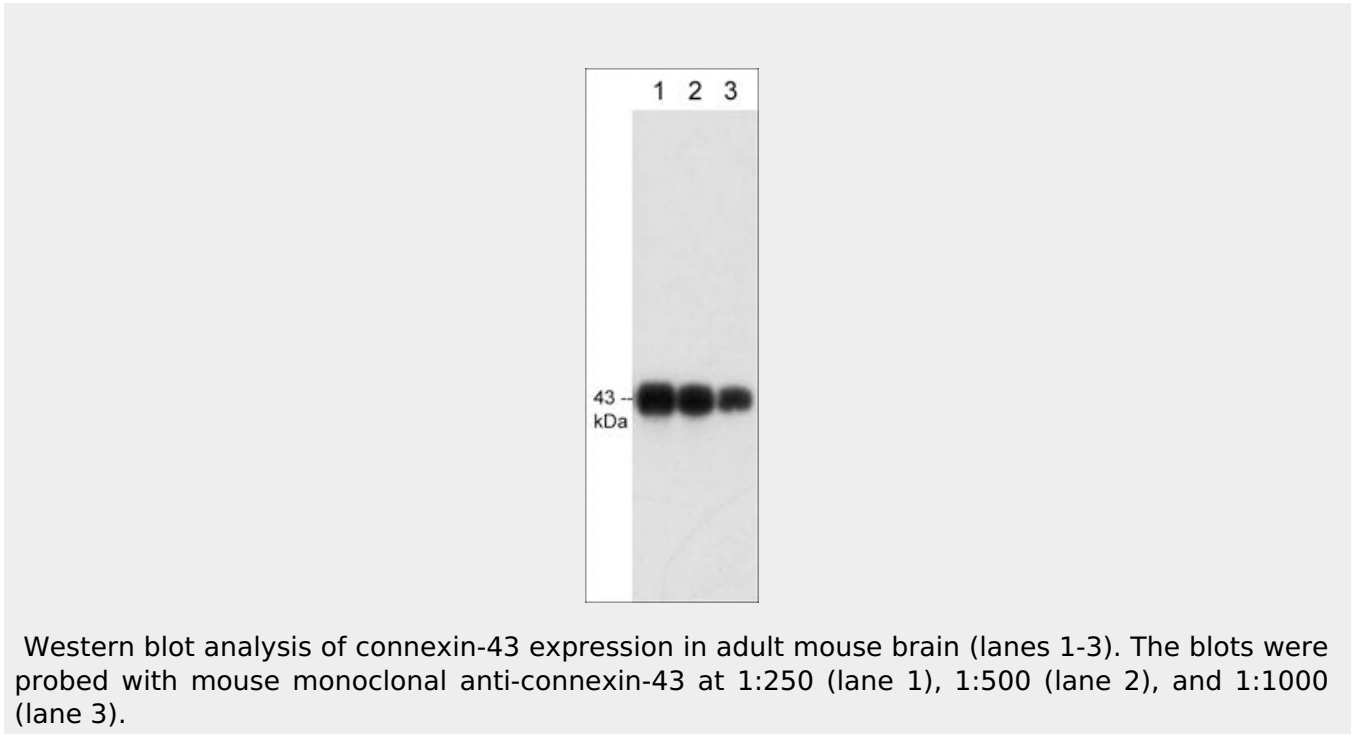
Blue Ice

Anti-Connexin-43 (C-terminal region) Antibody - Protocols

Provided below are standard protocols that you may find useful for product applications.

- [Western Blot](#)
- [Blocking Peptides](#)
- [Dot Blot](#)
- [Immunohistochemistry](#)
- [Immunofluorescence](#)
- [Immunoprecipitation](#)
- [Flow Cytometry](#)
- [Cell Culture](#)

Anti-Connexin-43 (C-terminal region) Antibody - Images



Anti-Connexin-43 (C-terminal region) Antibody - Background

Connexin-43 (Cx43, CXA1, Gap Junction α 1) is a member of the large family of gap junction proteins. Connexins assemble as a hexamer and are transported to the plasma membrane to create a hemichannel that can associate with hemichannels on nearby cells to create cell-to-cell channels that cluster together to form gap junctions. Gap junction communication is critical for cell to cell communication during development and regulation of cell growth. Phosphorylation of connexin-43 is important in regulating both the assembly and the function of gap junctions. PKC phosphorylates Ser-368 in connexin-43 after activation of cells with phorbol esters. This phosphorylation event decreases cell-to-cell communication. In addition, the tyrosine kinase, c-Src, can interact with and phosphorylate Tyr-265 in connexin-43 leading to inhibition of gap junction communication. Thus, connexin-43 phosphorylation may be an important mode for regulating gap junctional communication.