

Anti-Caveolin-1 (Tyr-14), Phosphospecific Antibody
Catalog # AN1687**Specification****Anti-Caveolin-1 (Tyr-14), Phosphospecific Antibody - Product Information**

Application	WB
Primary Accession	Q03135
Reactivity	Bovine
Host	Mouse
Clonality	Mouse Monoclonal
Isotype	IgG1
Calculated MW	20472

Anti-Caveolin-1 (Tyr-14), Phosphospecific Antibody - Additional Information

Gene ID	857
Other Names	
caveolin1, vip21	

Target/Specificity

Caveolins are the primary structural components of the plasma membrane microdomains, caveolae. Three members of the caveolin family (caveolin-1, -2, and -3) have been identified, and each has distinct expression patterns. Caveolins are involved in diverse biological functions, including vesicular trafficking, cholesterol homeostasis, cell adhesion and apoptosis. Caveolins can interact with various signaling molecules, including G-proteins, receptor tyrosine kinases, PKCs, and Src family kinases. Phosphorylation at Tyr-14 is essential for caveolin association with SH2 or PTB domain-containing adaptor proteins, while phosphorylation at Ser-80 regulates caveolin binding to the ER membrane and entry into the secretory pathway.

Format

Protein A Purified

Storage

Maintain refrigerated at 2-8°C for up to 6 months. For long term storage store at -20°C in small aliquots to prevent freeze-thaw cycles.

Precautions

Anti-Caveolin-1 (Tyr-14), Phosphospecific Antibody is for research use only and not for use in diagnostic or therapeutic procedures.

Shipping

Blue Ice

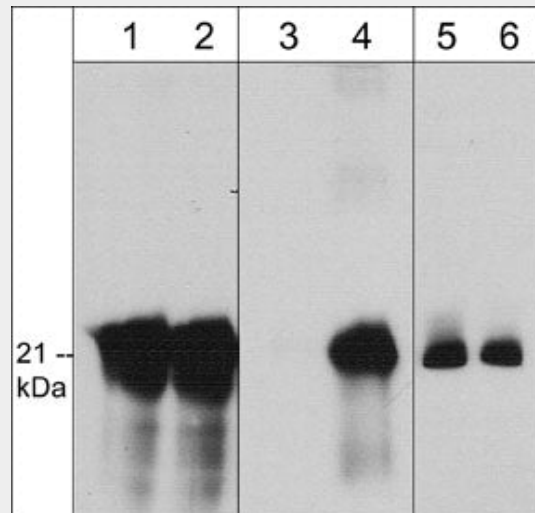
Anti-Caveolin-1 (Tyr-14), Phosphospecific Antibody - Protocols

Provided below are standard protocols that you may find useful for product applications.

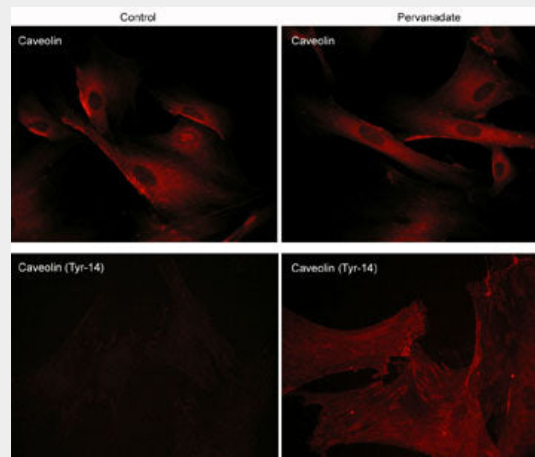
- [Western Blot](#)

- [Blocking Peptides](#)
- [Dot Blot](#)
- [Immunohistochemistry](#)
- [Immunofluorescence](#)
- [Immunoprecipitation](#)
- [Flow Cytometry](#)
- [Cell Culture](#)

Anti-Caveolin-1 (Tyr-14), Phosphospecific Antibody - Images



Western blot image of human A431 cells unstimulated (lanes 1, 3, & 5) or stimulated with pervanadate (1 mM) for 30 min (lanes 2, 4, & 6). The blots were probed with rabbit polyclonal caveolin-1 (N-term.) (lanes 1 & 2), mouse monoclonal caveolin-1 (Tyr-14) (lanes 3 & 4) or mouse monoclonal caveolin-1 (lanes 5 & 6).



Immunocytochemical labeling of caveolin-1 phosphorylation in rabbit spleen fibroblasts. The cells were treated with pervanadate (1 mM) for 30 min, then fixed with paraformaldehyde and labeled with rabbit polyclonal Caveolin-1 (N-terminal region) and mouse monoclonal Caveolin-1 (Tyr-14) antibodies. The antibodies were detected using appropriate secondary antibodies conjugated to Cy3.

Anti-Caveolin-1 (Tyr-14), Phosphospecific Antibody - Background

Caveolins are the primary structural components of the plasma membrane microdomains, caveolae. Three members of the caveolin family (caveolin-1, -2, and -3) have been identified, and

each has distinct expression patterns. Caveolins are involved in diverse biological functions, including vesicular trafficking, cholesterol homeostasis, cell adhesion and apoptosis. Caveolins can interact with various signaling molecules, including G-proteins, receptor tyrosine kinases, PKCs, and Src family kinases. Phosphorylation at Tyr-14 is essential for caveolin association with SH2 or PTB domain-containing adaptor proteins, while phosphorylation at Ser-80 regulates caveolin binding to the ER membrane and entry into the secretory pathway.