

Anti-Arp2 (Thr-237/Thr-238), Phosphospecific Antibody
Catalog # AN1640**Specification****Anti-Arp2 (Thr-237/Thr-238), Phosphospecific Antibody - Product Information**

Application	WB
Primary Accession	P61160
Reactivity	Bovine, Chicken
Host	Rabbit
Clonality	Rabbit Polyclonal
Isotype	IgG
Calculated MW	44761

Anti-Arp2 (Thr-237/Thr-238), Phosphospecific Antibody - Additional Information

Gene ID	10097
Other Names	
ACTR2, Arp2	

Target/Specificity

Cellular morphology, adhesion, and motility occur through dynamic reorganization of actin-based superstructures. Actin-binding proteins are critical for regulating actin polymerization and superstructure formation. The Arp2/3 complex is an actin polymerization-inducing complex that includes Arp2, Arp3, p41-Arc, p34-Arc, p21-Arc, p20-Arc, and p16-Arc. Several nucleation promoting factors, such as WASP and coronin, regulate the activity of the Arp2/3 complex. In addition, the Arp2/3 complex may be regulated by phosphorylation of specific subunits in the complex. Arp2 has two phosphosites, Thr-237 and Thr-238, that are evolutionarily conserved, and are phosphorylated along with Tyr-202 in response to growth factor stimulation. These phosphorylation events may regulate binding to the pointed end of actin filaments, and alanine substitutions of these Arp2 phosphosites inhibit membrane protrusions. Thus, phosphorylation may be another mode of Arp2/3 complex regulation in addition to the activity of nucleation-promoting factors.

Format

Antigen Affinity Purified

Storage

Maintain refrigerated at 2-8°C for up to 6 months. For long term storage store at -20°C in small aliquots to prevent freeze-thaw cycles.

Precautions

Anti-Arp2 (Thr-237/Thr-238), Phosphospecific Antibody is for research use only and not for use in diagnostic or therapeutic procedures.

Shipping

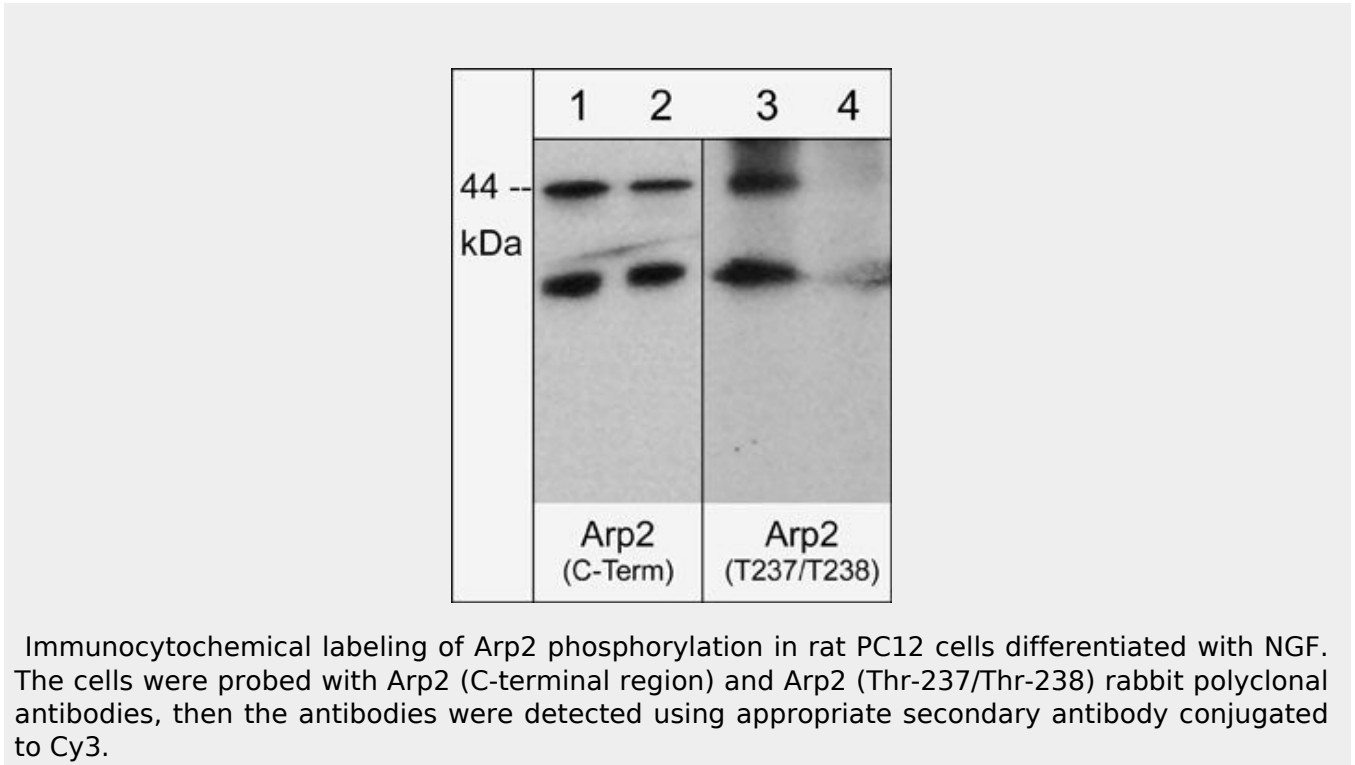
Blue Ice

Anti-Arp2 (Thr-237/Thr-238), Phosphospecific Antibody - Protocols

Provided below are standard protocols that you may find useful for product applications.

- [Western Blot](#)
- [Blocking Peptides](#)
- [Dot Blot](#)
- [Immunohistochemistry](#)
- [Immunofluorescence](#)
- [Immunoprecipitation](#)
- [Flow Cytometry](#)
- [Cell Culture](#)

Anti-Arp2 (Thr-237/Thr-238), Phosphospecific Antibody - Images



Anti-Arp2 (Thr-237/Thr-238), Phosphospecific Antibody - Background

Cellular morphology, adhesion, and motility occur through dynamic reorganization of actin-based superstructures. Actin-binding proteins are critical for regulating actin polymerization and superstructure formation. The Arp2/3 complex is an actin polymerization-inducing complex that includes Arp2, Arp3, p41-Arc, p34-Arc, p21-Arc, p20-Arc, and p16-Arc. Several nucleation promoting factors, such as WASP and coronin, regulate the activity of the Arp2/3 complex. In addition, the Arp2/3 complex may be regulated by phosphorylation of specific subunits in the complex. Arp2 has two phosphosites, Thr-237 and Thr-238, that are evolutionarily conserved, and are phosphorylated along with Tyr-202 in response to growth factor stimulation. These phosphorylation events may regulate binding to the pointed end of actin filaments, and alanine substitutions of these Arp2 phosphosites inhibit membrane protrusions. Thus, phosphorylation may be another mode of Arp2/3 complex regulation in addition to the activity of nucleation-promoting factors.