

**Anti-Annexin A2 (C-terminal region) Antibody**  
Catalog # AN1631**Specification****Anti-Annexin A2 (C-terminal region) Antibody - Product Information**

Application	WB, IHC, IF
Primary Accession	<a href="#">P07355</a>
Reactivity	Bovine, Chicken
Host	Mouse
Clonality	Mouse Monoclonal
Isotype	IgG1
Calculated MW	38604

**Anti-Annexin A2 (C-terminal region) Antibody - Additional Information**

Gene ID 302

**Other Names**

Lipocortin, Calpactin 1, Annexin II

**Target/Specificity**

The Annexin family is composed of at least thirteen mammalian genes (Annexin A1-13). These proteins are characterized by a conserved core domain which binds to phospholipids in a Ca<sup>2+</sup>-dependent manner and a unique amino terminal region which may confer binding specificity. Annexins have roles in membrane fusion, endocytosis, secretion, and repair. Annexin A1 binds to cellular membranes in a calcium-dependent manner, promotes membrane fusion and endocytosis, and has been implicated as an anti-inflammatory mediator. Annexin A2 is a cytoskeletal calcium-dependent phospholipid binding protein, which has been shown to be a mediator of corticosteroid activity, a substrate for serine/threonine kinases and growth regulated tyrosine kinases, and may play a role in secretion. Annexin A5 is a PKC inhibitor, directly interacts with VEGFR2 receptor, and binds phosphatidylserine to inhibit blood coagulation. Annexin A6 reverses transformation of A431 cells after overexpression, and this effect may involve annexin A6 targeting of p120 RasGAP to the plasma membrane to inactivate Ras.

**Format**

Protein A Purified

**Storage**

Maintain refrigerated at 2-8°C for up to 6 months. For long term storage store at -20°C in small aliquots to prevent freeze-thaw cycles.

**Precautions**

Anti-Annexin A2 (C-terminal region) Antibody is for research use only and not for use in diagnostic or therapeutic procedures.

**Shipping**

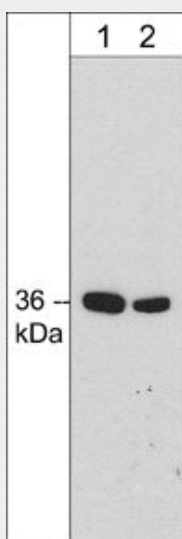
Blue Ice

**Anti-Annexin A2 (C-terminal region) Antibody - Protocols**

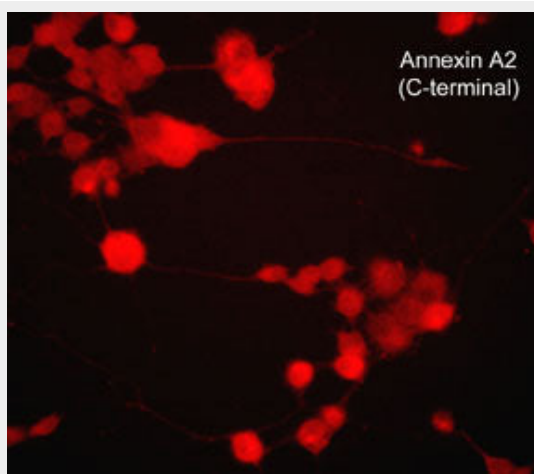
Provided below are standard protocols that you may find useful for product applications.

- [Western Blot](#)
- [Blocking Peptides](#)
- [Dot Blot](#)
- [Immunohistochemistry](#)
- [Immunofluorescence](#)
- [Immunoprecipitation](#)
- [Flow Cytometry](#)
- [Cell Culture](#)

#### Anti-Annexin A2 (C-terminal region) Antibody - Images



Western blot of rat PC12 cell lysate. The blot was probed with mouse monoclonal anti-Annexin A2 antibody at 1:250 (lane 1) or 1:1000 (lane 2).



Immunocytochemical labeling of Annexin A2 in NGF-differentiated rat PC12 cells. The cells were fixed in paraformaldehyde and permeabilized using NP-40, then labeled with mouse monoclonal Annexin A2 (C-terminal region). The antibody was detected using goat anti-mouse DyLight® 594.

#### Anti-Annexin A2 (C-terminal region) Antibody - Background

The Annexin family is composed of at least thirteen mammalian genes (Annexin A1-13). These proteins are characterized by a conserved core domain which binds to phospholipids in a

Ca<sup>2+</sup>-dependent manner and a unique amino terminal region which may confer binding specificity. Annexins have roles in membrane fusion, endocytosis, secretion, and repair. Annexin A1 binds to cellular membranes in a calcium-dependent manner, promotes membrane fusion and endocytosis, and has been implicated as an anti-inflammatory mediator. Annexin A2 is a cytoskeletal calcium-dependent phospholipid binding protein, which has been shown to be a mediator of corticosteroid activity, a substrate for serine/threonine kinases and growth regulated tyrosine kinases, and may play a role in secretion. Annexin A5 is a PKC inhibitor, directly interacts with VEGFR2 receptor, and binds phosphatidylserine to inhibit blood coagulation. Annexin A6 reverses transformation of A431 cells after overexpression, and this effect may involve annexin A6 targeting of p120 RasGAP to the plasma membrane to inactivate Ras.