

## Anti-Vimentin Antibody

Our Anti-Vimentin primary antibody from PhosphoSolutions is mouse monoclonal. It detects human Vimen

Catalog # AN1606

### Specification

---

#### Anti-Vimentin Antibody - Product Information

Application	WB
Primary Accession	<a href="#">P08670</a>
Host	Mouse
Clonality	Monoclonal
Isotype	IgM
Calculated MW	53652

#### Anti-Vimentin Antibody - Additional Information

Gene ID **7431**

##### Other Names

CTRCT30 antibody, Epididymis luminal protein 113 antibody, FLJ36605 antibody, HEL113 antibody, VIM antibody, VIME\_HUMAN antibody, Vimentin antibody

##### Target/Specificity

Vimentin is the major protein subunit of the 10 nm or intermediate filaments (IFs) found in many kinds of mesenchymal and epithelial cells as well as developing neuronal and astrocytic precursor cells in the CNS. Vimentin is thought to be critically involved in lymphocyte adhesion and transmigration (Nieminen M et al. 2006). Copolymers are frequently formed between vimentin and other IFs, such as GFAP (in many kinds of astrocytes), desmin (in muscle cells) and neurofilament proteins (in developing neurons). Antibodies to vimentin are useful in studies of stem cells and generally to reveal the filamentous cytoskeleton. Recent studies suggest that vimentin affects prostate cancer cells motility and invasiveness (Zhao et al. 2008).

##### Format

Protein L Purified

##### Storage

Maintain refrigerated at 2-8°C for up to 6 months. For long term storage store at -20°C in small aliquots to prevent freeze-thaw cycles.

##### Precautions

Anti-Vimentin Antibody is for research use only and not for use in diagnostic or therapeutic procedures.

##### Shipping

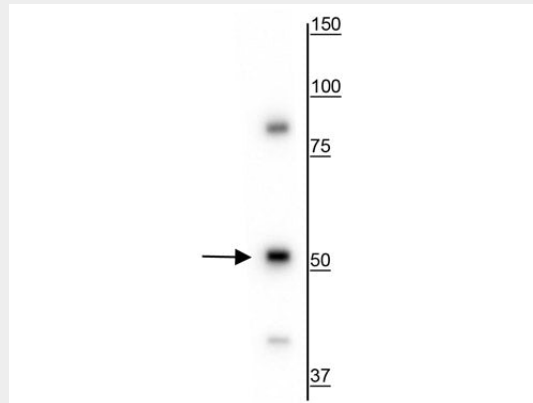
Blue Ice

#### Anti-Vimentin Antibody - Protocols

Provided below are standard protocols that you may find useful for product applications.

- [Western Blot](#)
- [Blocking Peptides](#)
- [Dot Blot](#)
- [Immunohistochemistry](#)
- [Immunofluorescence](#)
- [Immunoprecipitation](#)
- [Flow Cytometry](#)
- [Cell Culture](#)

### Anti-Vimentin Antibody - Images



Western blot of HeLa cell lysate showing specific immunolabeling of the ~50 kDa vimentin protein.

### Anti-Vimentin Antibody - Background

Vimentin is the major protein subunit of the 10 nm or intermediate filaments (IFs) found in many kinds of mesenchymal and epithelial cells as well as developing neuronal and astrocytic precursor cells in the CNS. Vimentin is thought to be critically involved in lymphocyte adhesion and transmigration (Nieminen M et al. 2006). Copolymers are frequently formed between vimentin and other IFs, such as GFAP (in many kinds of astrocytes), desmin (in muscle cells) and neurofilament proteins (in developing neurons). Antibodies to vimentin are useful in studies of stem cells and generally to reveal the filamentous cytoskeleton. Recent studies suggest that vimentin affects prostate cancer cells motility and invasiveness (Zhao et al. 2008).