

## Anti-Synaptotagmin 1 Antibody

Our Anti-synaptotagmin 1 rabbit polyclonal primary antibody from PhosphoSolutions is produced in-house  
Catalog # AN1569

### Specification

---

#### Anti-Synaptotagmin 1 Antibody - Product Information

Primary Accession	<a href="#">P21707</a>
Host	<b>Rabbit</b>
Clonality	<b>Polyclonal</b>
Isotype	<b>IgG</b>
Calculated MW	<b>47399</b>

#### Anti-Synaptotagmin 1 Antibody - Additional Information

Gene ID **25716**

##### Other Names

DKFZp781D2042 antibody, FLJ42519 antibody, P65 antibody, SVP65 antibody, synaptotagmin 1 antibody, Synaptotagmin I antibody, SYT antibody, SYT1 antibody, Syt1 antibody

##### Target/Specificity

Synaptotagmin 1 is a synaptic vesicle membrane glycoprotein that is widely expressed throughout the CNS and is generally thought to act as the Ca<sup>2+</sup> sensor in the regulation of exocytosis and neurotransmitter release (Littleton and Bellen 1995). Recent studies indicate that synaptotagmin's Ca<sup>2+</sup> mediated binding of SNAP25 is essential for the Ca<sup>2+</sup> dependent triggering of membrane fusion (Zhang et al., 2002). It has recently been demonstrated that discrete residues within the c(2)b binding domain of synaptotagmin 1 independently specify endocytic rate and synaptic vesicle size (Poskanzer et al., 2006).

##### Format

Antigen Affinity Purified from Pooled Serum

##### Storage

Maintain refrigerated at 2-8°C for up to 6 months. For long term storage store at -20°C in small aliquots to prevent freeze-thaw cycles.

##### Precautions

Anti-Synaptotagmin 1 Antibody is for research use only and not for use in diagnostic or therapeutic procedures.

##### Shipping

Blue Ice

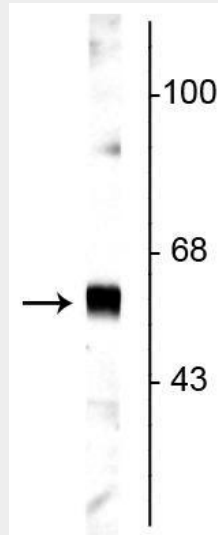
#### Anti-Synaptotagmin 1 Antibody - Protocols

Provided below are standard protocols that you may find useful for product applications.

- [Western Blot](#)

- [Blocking Peptides](#)
- [Dot Blot](#)
- [Immunohistochemistry](#)
- [Immunofluorescence](#)
- [Immunoprecipitation](#)
- [Flow Cytometry](#)
- [Cell Culture](#)

### Anti-Synaptotagmin 1 Antibody - Images



Western blot of rat cortical lysate showing specific labeling of the ~65 kDa synaptotagmin protein.

### Anti-Synaptotagmin 1 Antibody - Background

Synaptotagmin 1 is a synaptic vesicle membrane glycoprotein that is widely expressed throughout the CNS and is generally thought to act as the  $Ca^{2+}$  sensor in the regulation of exocytosis and neurotransmitter release (Littleton and Bellen 1995). Recent studies indicate that synaptotagmin's  $Ca^{2+}$  mediated binding of SNAP25 is essential for the  $Ca^{2+}$  dependent triggering of membrane fusion (Zhang et al., 2002). It has recently been demonstrated that discrete residues within the c(2)b binding domain of synaptotagmin 1 independently specify endocytic rate and synaptic vesicle size (Poskanzer et al., 2006).