

Anti-Synaptobrevin (VAMP) Antibody

Our Anti-Synaptobrevin (VAMP) primary antibody from PhosphoSolutions is mouse monoclonal. It detects
Catalog # AN1566

Specification

Anti-Synaptobrevin (VAMP) Antibody - Product Information

Application	WB
Primary Accession	P23763
Reactivity	Bovine, Chicken, Drosophila, C.Elegans, Epstein Barr Virus, Neisseria Gonorrhoeae, Human
Host	Mouse
Clonality	Monoclonal
Isotype	IgM
Calculated MW	12902

Anti-Synaptobrevin (VAMP) Antibody - Additional Information

Gene ID **6843**

Other Names

SYB antibody, SYB1 antibody, Synaptobrevin 1 antibody, VAMP antibody, VAMP1 antibody, Vesicle associated membrane protein 1 antibody

Target/Specificity

Synaptobrevin (aka VAMP) is an integral membrane protein of synaptic vesicles that plays a major role in the formation of larger SNARE complexes, along with SNAP-25 and syntaxin. Synaptobrevin has been shown to be essential for two fast synapse-specific membrane trafficking processes: fast exocytosis for neurotransmitter release and fast endocytosis that mediates rapid recycling of synaptic vesicles (Deak et al., 2004). Decreased levels of synaptobrevin in human hippocampus and cortex have been correlated with cognitive deficits in Alzheimer's disease (Sze et al., 2000).

Format

IgM Purified culture supernatant

Storage

Maintain refrigerated at 2-8°C for up to 6 months. For long term storage store at -20°C in small aliquots to prevent freeze-thaw cycles.

Precautions

Anti-Synaptobrevin (VAMP) Antibody is for research use only and not for use in diagnostic or therapeutic procedures.

Shipping

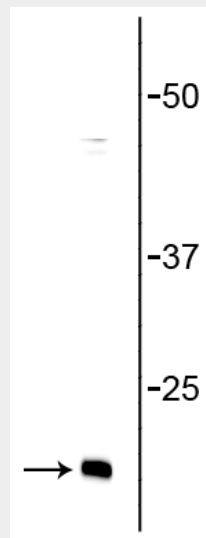
Blue Ice

Anti-Synaptobrevin (VAMP) Antibody - Protocols

Provided below are standard protocols that you may find useful for product applications.

- [Western Blot](#)
- [Blocking Peptides](#)
- [Dot Blot](#)
- [Immunohistochemistry](#)
- [Immunofluorescence](#)
- [Immunoprecipitation](#)
- [Flow Cytometry](#)
- [Cell Culture](#)

Anti-Synaptobrevin (VAMP) Antibody - Images



Western blot of rat brain lysate showing specific immunolabeling of the ~ 16 kDa synaptobrevin protein.

Anti-Synaptobrevin (VAMP) Antibody - Background

Synaptobrevin (aka VAMP) is an integral membrane protein of synaptic vesicles that plays a major role in the formation of larger SNARE complexes, along with SNAP-25 and syntaxin. Synaptobrevin has been shown to be essential for two fast synapse-specific membrane trafficking processes: fast exocytosis for neurotransmitter release and fast endocytosis that mediates rapid recycling of synaptic vesicles (Deak et al., 2004). Decreased levels of synaptobrevin in human hippocampus and cortex have been correlated with cognitive deficits in Alzheimer's disease (Sze et al., 2000).