

Anti-SOX2 Antibody

Our Anti-SOX2 rabbit polyclonal primary antibody from PhosphoSolutions is produced in-house. It detects SOX2.
Catalog # AN1557

Specification

Anti-SOX2 Antibody - Product Information

Application	WB
Primary Accession	P48431
Host	Rabbit
Clonality	Polyclonal
Isotype	IgG
Calculated MW	34310

Anti-SOX2 Antibody - Additional Information

Gene ID **6657**

Other Names

SRY box 2, sex-determining region Y box 2

Target/Specificity

SOX2 (SRY (sex-determining region Y)-box 2) is one of 20 members of the Sox family proteins that play essential roles in cell differentiation, development, and organogenesis. SOX2, a group B Sox family protein, is one of the master transcriptional factors, along with Oct3/4 (Nichols, J., et al, 1998) and PAK6 (Kamachi, Y. et al, 2001) that are important in maintaining the pluripotency of embryonic stem cells, thus making SOX2 an excellent marker of neural stem cells. SOX2 has also been identified as a lineage-survival oncogene in lung and esophageal squamous cell carcinomas due to peak amplification on chromosome 3q26.33 which contains the SOX2 gene transcription factor (Bass, A.J., et al, 2009). Additionally, Sox2 has been reported to be highly deregulated in glioblastomas (Gangemi, R. M. R, et al, 2009) and breast cancer (Rodriguez-Pinilla, S.M., et al, 2007).

Format

Antigen Affinity Purified from Pooled Serum

Storage

Maintain refrigerated at 2-8°C for up to 6 months. For long term storage store at -20°C in small aliquots to prevent freeze-thaw cycles.

Precautions

Anti-SOX2 Antibody is for research use only and not for use in diagnostic or therapeutic procedures.

Shipping

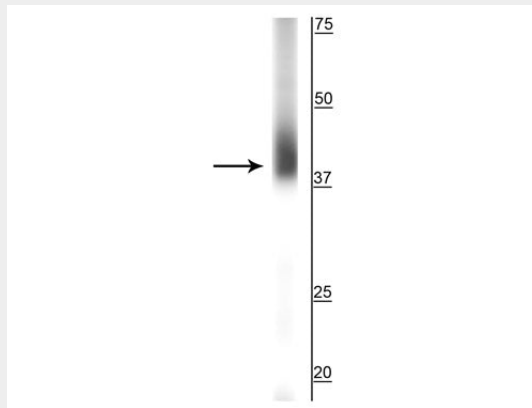
Blue Ice

Anti-SOX2 Antibody - Protocols

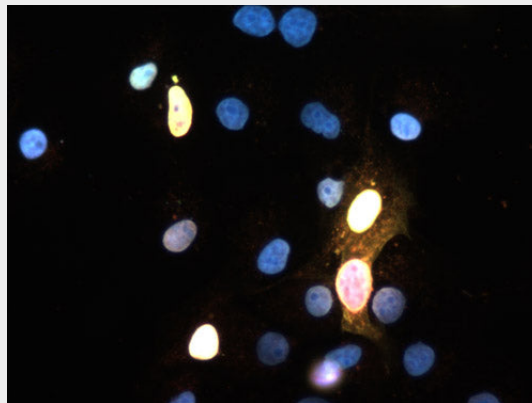
Provided below are standard protocols that you may find useful for product applications.

- [Western Blot](#)
- [Blocking Peptides](#)
- [Dot Blot](#)
- [Immunohistochemistry](#)
- [Immunofluorescence](#)
- [Immunoprecipitation](#)
- [Flow Cytometry](#)
- [Cell Culture](#)

Anti-SOX2 Antibody - Images



Western blot of NIH 3T3 cell lysate showing specific immunolabeling of the ~35 kDa SOX2 protein.



Immunofluorescence of FLAG-tagged SOX2 transfected COS cells showing SOX2 staining in red (cat. 1907-SOX2, 1:20) and FLAG staining in green, causing positive transfected cells to appear yellow. DNA is stained blue with DAPI.

Anti-SOX2 Antibody - Background

SOX2 (SRY (sex-determining region Y)-box 2) is one of 20 members of the Sox family proteins that play essential roles in cell differentiation, development, and organogenesis. SOX2, a group B Sox family protein, is one of the master transcriptional factors, along with Oct3/4 (Nichols, J., et al, 1998) and PAK6 (Kamachi, Y. et al, 2001) that are important in maintaining the pluripotency of embryonic stem cells, thus making SOX2 an excellent marker of neural stem cells. SOX2 has also been identified as a lineage-survival oncogene in lung and esophageal squamous cell carcinomas due to peak amplification on chromosome 3q26.33 which contains the SOX2 gene transcription factor (Bass, A.J., et al, 2009). Additionally, Sox2 has been reported to be highly deregulated in

glioblastomas (Gangemi, R. M. R, et al, 2009) and breast cancer (Rodriguez-Pinilla, S.M., et al, 2007).