

**Anti-Polo-Like Kinase (Thr210) Antibody**

Our Anti-Polo-Like Kinase (Thr210) rabbit polyclonal phosphospecific primary antibody from PhosphoSo  
Catalog # AN1519

**Specification**

---

**Anti-Polo-Like Kinase (Thr210) Antibody - Product Information**

Primary Accession	<a href="#">P53350</a>
Host	<b>Rabbit</b>
Clonality	<b>Polyclonal</b>
Isotype	<b>IgG</b>
Calculated MW	<b>68255</b>

**Anti-Polo-Like Kinase (Thr210) Antibody - Additional Information**

Gene ID **5347**

**Other Names**

Cell cycle regulated protein kinase antibody, PLK 1 antibody, PLK antibody, PLK-1 antibody, plk1 antibody, PLK1\_HUMAN antibody, Polo like kinase 1 antibody, Polo-like kinase 1 antibody, Serine/threonine protein kinase 13 antibody, Serine/threonine protein kinase PLK1 antibody, Serine/threonine-protein kinase 13 antibody, Serine/threonine-protein kinase PLK1 antibody, STPK 13 antibody, STPK13 antibody

**Target/Specificity**

Polo-like kinases are important regulators of cell cycle progression. PLK1 is a highly conserved Ser/Thr kinase that has essential roles in the formation of mitotic bipolar spindles (van Vugt et al., 2004). Deregulated expression of PLK's is detected in many types of cancer and associated with oncogenesis (Takei et al., 2005). It has been proposed that PLK1 function is altered at different stages of mitosis through consecutive phosphorylation events at Ser-137 and Thr-210 (van de Weerd et al., 2005).

**Format**

Antigen Affinity Purified from Pooled Serum

**Storage**

Maintain refrigerated at 2-8°C for up to 6 months. For long term storage store at -20°C in small aliquots to prevent freeze-thaw cycles.

**Precautions**

Anti-Polo-Like Kinase (Thr210) Antibody is for research use only and not for use in diagnostic or therapeutic procedures.

**Shipping**

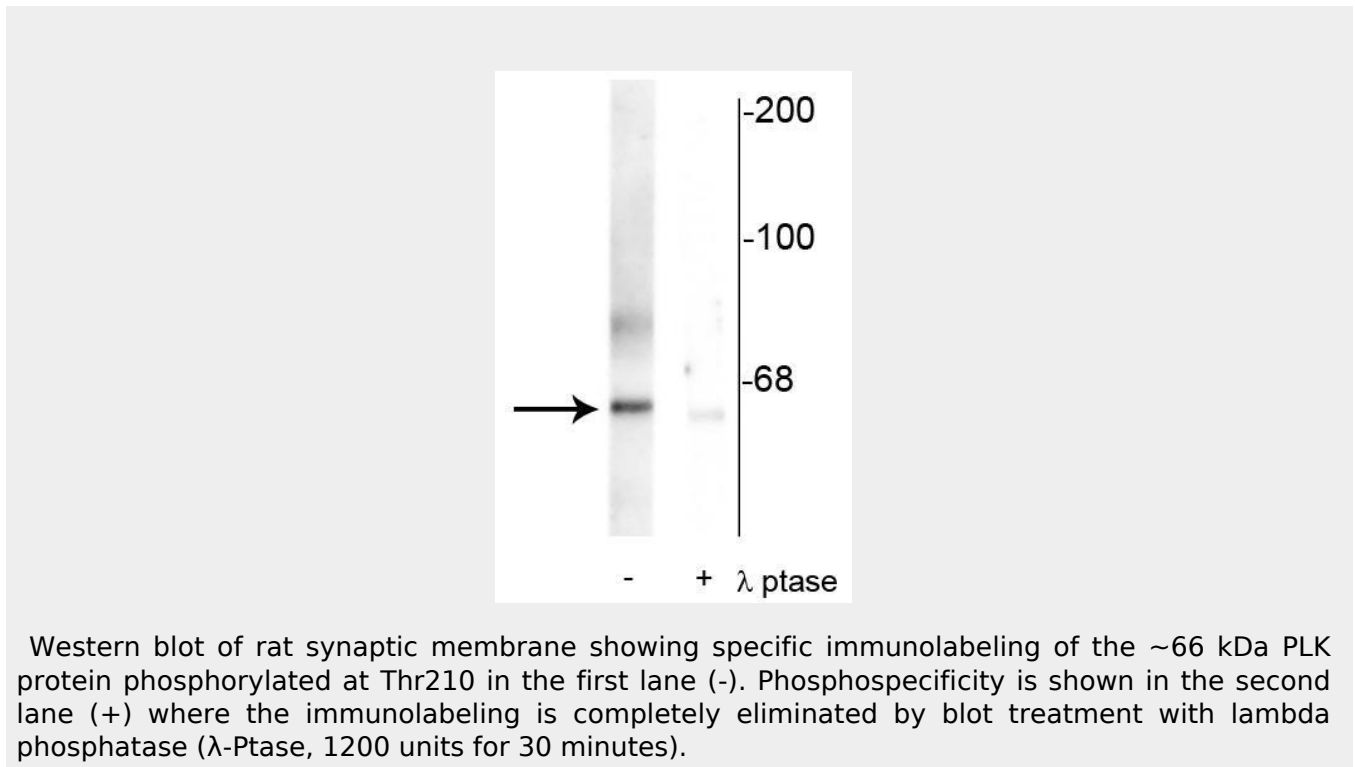
Blue Ice

**Anti-Polo-Like Kinase (Thr210) Antibody - Protocols**

Provided below are standard protocols that you may find useful for product applications.

- [Western Blot](#)
- [Blocking Peptides](#)
- [Dot Blot](#)
- [Immunohistochemistry](#)
- [Immunofluorescence](#)
- [Immunoprecipitation](#)
- [Flow Cytometry](#)
- [Cell Culture](#)

### Anti-Polo-Like Kinase (Thr210) Antibody - Images



### Anti-Polo-Like Kinase (Thr210) Antibody - Background

Polo-like kinases are important regulators of cell cycle progression. PLK1 is a highly conserved Ser/Thr kinase that has essential roles in the formation of mitotic bipolar spindles (van Vugt et al., 2004). Deregulated expression of PLK's is detected in many types of cancer and associated with oncogenesis (Takei et al., 2005). It has been proposed that PLK1 function is altered at different stages of mitosis through consecutive phosphorylation events at Ser-137 and Thr-210 (van de Weerd et al., 2005).