

Anti-PEBP (phosphatidylethanolamine binding protein) Antibody

Our Anti-PEBP (phosphatidylethanolamine binding protein) primary antibody from PhosphoSolutions is available in the following format:
Catalog # AN1513

Specification**Anti-PEBP (phosphatidylethanolamine binding protein) Antibody - Product Information**

Primary Accession	P31044
Reactivity	Bovine
Host	Rabbit
Clonality	Polyclonal
Isotype	IgG
Calculated MW	20801

Anti-PEBP (phosphatidylethanolamine binding protein) Antibody - Additional Information

Gene ID **29542**

Other Names

Epididymis luminal protein 210 antibody, Epididymis secretory protein Li 34 antibody, Epididymis secretory protein Li 96 antibody, HCNP antibody, HCNPpp antibody, HEL 210 antibody, HEL S 34 antibody, HEL S 96 antibody, Hippocampal cholinergic neurostimulating peptide antibody, Neuropolypeptide h3 antibody, PBP antibody, PEBP antibody, PEBP 1 antibody, PEBP-1 antibody, Pebp1 antibody, PEBP1_HUMAN antibody, Phosphatidylethanolamine binding protein antibody, Phosphatidylethanolamine binding protein 1 antibody, Prostatic binding protein antibody, Prostatic-binding protein antibody, R kip antibody, Raf kinase inhibitor protein antibody, Raf kinase inhibitory protein antibody, RKIP antibody

Target/Specificity

Phosphatidylethanolamine binding protein (PEBP), also known as Raf kinase inhibitory protein (RKIP) is a highly conserved multifunctional protein that modulates the Raf/MAPK signaling cascade and has been implicated as a suppressor of metastatic cancer (Trakul N et al., 2005). PEBP has been shown to not only inhibit cell proliferation but also to induce differentiation of human keratinocytes (Yamazaki et al., 2004). Dysregulation of calpain activity results in cellular degeneration in conditions such as Alzheimer's disease and recently PEBP has been identified as a potential in vivo calpain substrate (Chen et al., 2006).

Format

Neat Serum

Storage

Maintain refrigerated at 2-8°C for up to 6 months. For long term storage store at -20°C in small aliquots to prevent freeze-thaw cycles.

Precautions

Anti-PEBP (phosphatidylethanolamine binding protein) Antibody is for research use only and not for use in diagnostic or therapeutic procedures.

Shipping

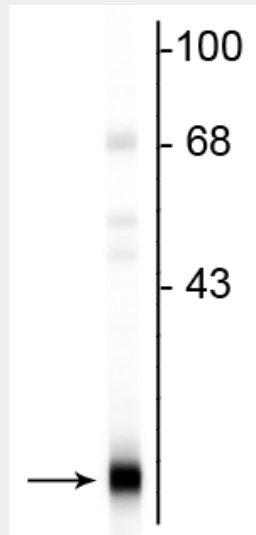
Blue Ice

Anti-PEBP (phosphatidylethanolamine binding protein) Antibody - Protocols

Provided below are standard protocols that you may find useful for product applications.

- [Western Blot](#)
- [Blocking Peptides](#)
- [Dot Blot](#)
- [Immunohistochemistry](#)
- [Immunofluorescence](#)
- [Immunoprecipitation](#)
- [Flow Cytometry](#)
- [Cell Culture](#)

Anti-PEBP (phosphatidylethanolamine binding protein) Antibody - Images



Western blot of rat brain lysate showing the specific immunolabeling of the ~22 kDa PEBP protein.

Anti-PEBP (phosphatidylethanolamine binding protein) Antibody - Background

Phosphatidylethanolamine binding protein (PEBP), also known as Raf kinase inhibitory protein (RKIP) is a highly conserved multifunctional protein that modulates the Raf/MAPK signaling cascade and has been implicated as a suppressor of metastatic cancer (Trakul N et al., 2005). PEBP has been shown to not only inhibit cell proliferation but also to induce differentiation of human keratinocytes (Yamazaki et al., 2004). Dysregulation of calpain activity results in cellular degeneration in conditions such as Alzheimer's disease and recently PEBP has been identified as a potential *in vivo* calpain substrate (Chen et al., 2006).