

Anti-Olig2 (Ser10/13/14) Antibody

Our Anti-Olig2 (Ser10/13/14) rabbit polyclonal phosphospecific primary antibody from PhosphoSolutions
Catalog # AN1502

Specification**Anti-Olig2 (Ser10/13/14) Antibody - Product Information**

Primary Accession	O13516
Host	Rabbit
Clonality	Polyclonal
Isotype	IgG
Calculated MW	32385

Anti-Olig2 (Ser10/13/14) Antibody - Additional Information

Gene ID **10215**

Other Names

Basic domain helix loop helix protein class B 6 antibody, Basic domain helix loop helix protein class B6 antibody, BHLH B6 antibody, BHLHB 6 antibody, bHLHb6 antibody, bHLHe21 antibody, Class B basic helix-loop-helix protein 6 antibody, Class E basic helix-loop-helix protein 21 antibody, Olig 1 antibody, Olig1 antibody, OLIG1_HUMAN antibody, Oligo 1 antibody, Oligo1 antibody, Oligodendrocyte lineage transcription factor 1 antibody, Oligodendrocyte specific bHLH transcription factor 1 antibody, Oligodendrocyte transcription factor 1 antibody

Target/Specificity

Olig2 is a well conserved bHLH transcription factor that shows both anti-neural functions and pro-neural functions at different stages in the formation of the oligodendrocyte lineage (Sun et al., 2011). Olig2 is expressed in 100% of the human diffuse gliomas irrespective of grade and required for intracranial tumor formation in a genetically relevant model of malignant glioma (Ligon et al., 2004; Ligon et al., 2007). A developmentally regulated triple serine motif at positions 10, 13 and 14 in the amino terminus is well conserved across species ranging from humans to zebrafish and is essential for Olig2 proliferative function in both normal and malignant neural progenitors (Sun et al., 2011). All three serine residues must be mutated to achieve a strong loss-of-function or gain-of-function phenotype, suggesting that the phosphorylation state of Olig2 represents a significant conformational change in the amino terminus (Sun et al., 2011).

Format

Antigen Affinity Purified from Pooled Serum

Storage

Maintain refrigerated at 2-8°C for up to 6 months. For long term storage store at -20°C in small aliquots to prevent freeze-thaw cycles.

Precautions

Anti-Olig2 (Ser10/13/14) Antibody is for research use only and not for use in diagnostic or therapeutic procedures.

Shipping

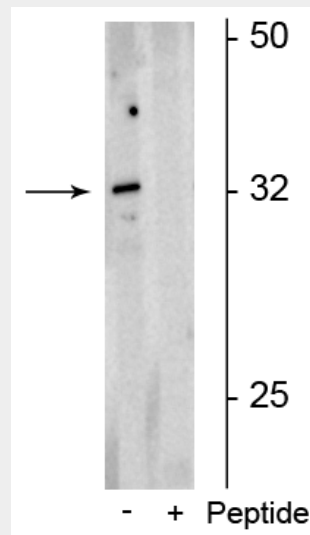
Blue Ice

Anti-Olig2 (Ser10/13/14) Antibody - Protocols

Provided below are standard protocols that you may find useful for product applications.

- [Western Blot](#)
- [Blocking Peptides](#)
- [Dot Blot](#)
- [Immunohistochemistry](#)
- [Immunofluorescence](#)
- [Immunoprecipitation](#)
- [Flow Cytometry](#)
- [Cell Culture](#)

Anti-Olig2 (Ser10/13/14) Antibody - Images



Western blot of rat neonatal brain lysate showing specific immunolabeling of the ~32 kDa form of the Olig2 protein phosphorylated at Ser10,13,14 in the first lane (-). Phosphospecificity is shown in the second lane (+) where Immunolabeling is blocked by the phosphopeptide used as the antigen but not by the corresponding non-phosphopeptide (not shown).

Anti-Olig2 (Ser10/13/14) Antibody - Background

Olig2 is a well conserved bHLH transcription factor that shows both anti-neural functions and pro-neural functions at different stages in the formation of the oligodendrocyte lineage (Sun et al., 2011). Olig2 is expressed in 100% of the human diffuse gliomas irrespective of grade and required for intracranial tumor formation in a genetically relevant model of malignant glioma (Ligon et al., 2004; Ligon et al., 2007). A developmentally regulated triple serine motif at positions 10, 13 and 14 in the amino terminus is well conserved across species ranging from humans to zebrafish and is essential for Olig2 proliferative function in both normal and malignant neural progenitors (Sun et al., 2011). All three serine residues must be mutated to achieve a strong loss-of-function or gain-of-function phenotype, suggesting that the phosphorylation state of Olig2 represents a significant conformational change in the amino terminus (Sun et al., 2011).