

Anti-Neurofilament NF-M Antibody

Our Anti-Neurofilament NF-M primary antibody from PhosphoSolutions is chicken polyclonal. It detects
Catalog # AN1469

Specification

Anti-Neurofilament NF-M Antibody - Product Information

| | |
|-------------------|-----------------------------|
| Application | WB, IHC |
| Primary Accession | P12839 |
| Reactivity | Bovine, Chicken, Drosophila |
| Host | Chicken |
| Clonality | Polyclonal |
| Isotype | IgY |
| Calculated MW | 95791 |

Anti-Neurofilament NF-M Antibody - Additional Information

Gene ID **24588**

Other Names

150 kDa Neurofilament Medium antibody, 160 kDa neurofilament protein antibody, Medium polypeptide 150kDa antibody, NEF3 antibody, Neurofilament 3 antibody, Neurofilament 3 medium antibody, Neurofilament medium polypeptide antibody, Neurofilament protein M antibody, Neurofilament triplet M protein antibody, Neurofilament-3 (150 kD medium) antibody, NF-M antibody, NFM antibody

Target/Specificity

Neurofilaments are the 10 nm or intermediate filament proteins found specifically in neurons, and are composed predominantly of three major proteins called NF-L, NF-M and NF-H (Harris et al., 1991). NF-M is the neurofilament middle or medium molecular weight polypeptide and runs on SDS-PAGE gels at 145-160 kDa, with some variability across species boundaries. Antibodies to NF-M are useful for identifying neuronal cells and their processes in tissue sections and in tissue culture. NF-M antibodies can also be useful to visualize neurofilament accumulations seen in many neurological diseases, such as Amyotrophic Lateral Sclerosis (Lou Gehrig's disease) and Alzheimer's disease (Hu et al., 2002).

Format

Total IgY fraction

Storage

Maintain refrigerated at 2-8°C for up to 6 months. For long term storage store at -20°C in small aliquots to prevent freeze-thaw cycles.

Precautions

Anti-Neurofilament NF-M Antibody is for research use only and not for use in diagnostic or therapeutic procedures.

Shipping

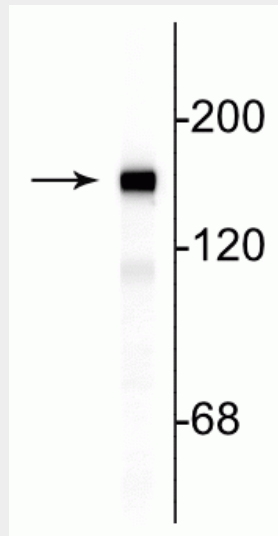
Blue Ice

Anti-Neurofilament NF-M Antibody - Protocols

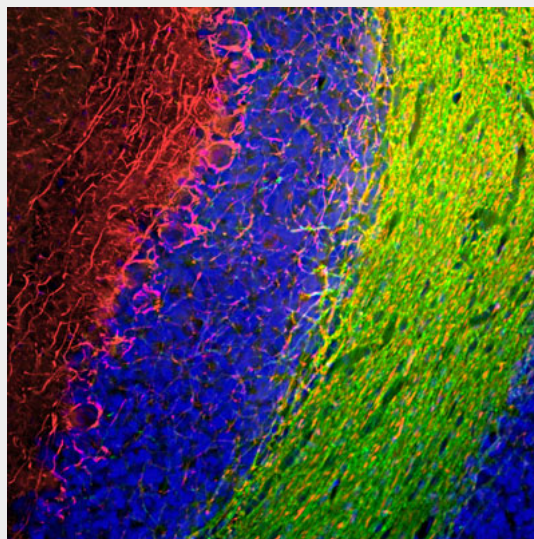
Provided below are standard protocols that you may find useful for product applications.

- [Western Blot](#)
- [Blocking Peptides](#)
- [Dot Blot](#)
- [Immunohistochemistry](#)
- [Immunofluorescence](#)
- [Immunoprecipitation](#)
- [Flow Cytometry](#)
- [Cell Culture](#)

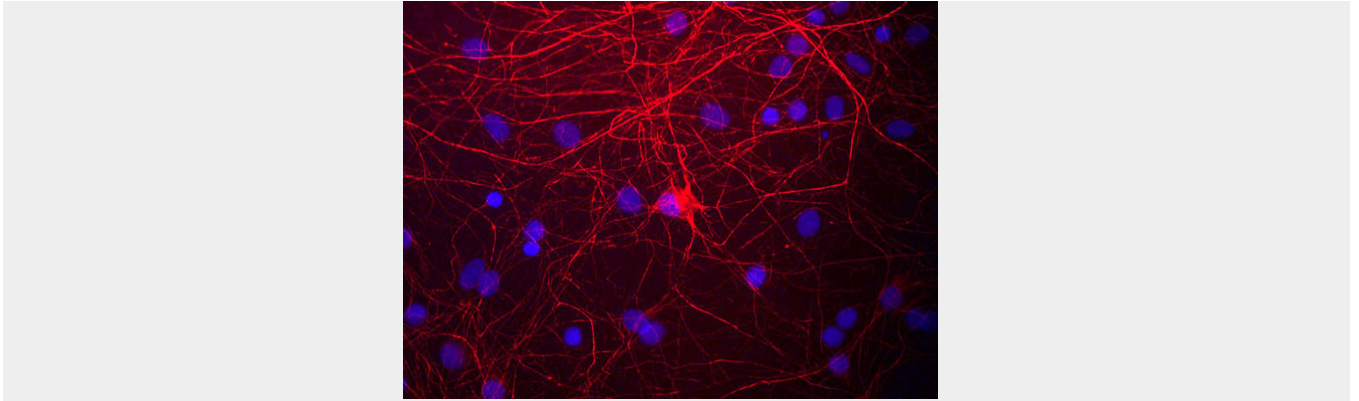
Anti-Neurofilament NF-M Antibody - Images



Western blot of rat cortical lysate showing specific immunolabeling of the ~145 kDa NF-M protein.



Immunofluorescence of a section of rat cerebellum labeled with anti-Neurofilament-M (cat. 1455-NFM, 1:1000, red) and anti-CNP (green). The anti-NFM labels the network of axons of basket neurons and other neurons. The blue is DAPI staining of nuclear DNA.



Immunostaining of cultured rat neurons and glia stained with anti-NFM antibody (cat. 1455-NFM, red, 1:1000) and DNA is stained blue.

Anti-Neurofilament NF-M Antibody - Background

Neurofilaments are the 10 nm or intermediate filament proteins found specifically in neurons, and are composed predominantly of three major proteins called NF-L, NF-M and NF-H (Harris et al., 1991). NF-M is the neurofilament middle or medium molecular weight polypeptide and runs on SDS-PAGE gels at 145-160 kDa, with some variability across species boundaries. Antibodies to NF-M are useful for identifying neuronal cells and their processes in tissue sections and in tissue culture. NF-M antibodies can also be useful to visualize neurofilament accumulations seen in many neurological diseases, such as Amyotrophic Lateral Sclerosis (Lou Gehrig's disease) and Alzheimer's disease (Hu et al., 2002).